

**Anti-NEFH/Nf H Rabbit Monoclonal Antibody**  
**Catalog # ABO13503****Specification**

---

**Anti-NEFH/Nf H Rabbit Monoclonal Antibody - Product Information**

Application	WB, IHC
Primary Accession	<a href="#">P12036</a>
Host	Rabbit
Isotype	Rabbit IgG
Reactivity	Rat, Human, Mouse
Clonality	Monoclonal
Format	Liquid

**Description**

Anti-NEFH/Nf H Rabbit Monoclonal Antibody . Tested in WB, IHC applications. This antibody reacts with Human, Mouse, Rat.

**Anti-NEFH/Nf H Rabbit Monoclonal Antibody - Additional Information**

**Gene ID** 4744

**Other Names**

Neurofilament heavy polypeptide, NF-H, 200 kDa neurofilament protein, Neurofilament triplet H protein, NEFH, KIAA0845, NfH

**Calculated MW**

112479 MW KDa

**Application Details**

WB 1:500-1:2000<br>IHC 1:100-1:500

**Contents**

Rabbit IgG in phosphate buffered saline, pH 7.4, 150mM NaCl, 0.02% sodium azide and 50% glycerol, 0.4-0.5mg/ml BSA.

**Immunogen**

A synthesized peptide derived from human NEFH

**Purification**

Affinity-chromatography

**Storage**

**Store at -20°C for one year. For short term storage and frequent use, store at 4°C for up to one month. Avoid repeated freeze-thaw cycles.**

**Anti-NEFH/Nf H Rabbit Monoclonal Antibody - Protein Information**

**Name** NEFH

**Synonyms** KIAA0845, NFH

**Function**

Neurofilaments usually contain three intermediate filament proteins: NEFL, NEFM, and NEFH which are involved in the maintenance of neuronal caliber. NEFH has an important function in mature axons that is not subserved by the two smaller NF proteins. May additionally cooperate with the neuronal intermediate filament proteins PRPH and INA to form neuronal filamentous networks (By similarity).

**Cellular Location**

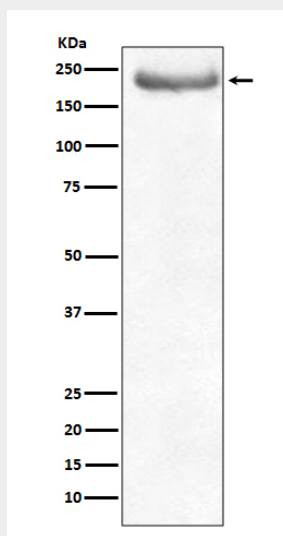
Cytoplasm, cytoskeleton. Cell projection, axon {ECO:0000250|UniProtKB:P19246}

**Anti-NEFH/Nf H Rabbit Monoclonal Antibody - Protocols**

Provided below are standard protocols that you may find useful for product applications.

- [Western Blot](#)
- [Blocking Peptides](#)
- [Dot Blot](#)
- [Immunohistochemistry](#)
- [Immunofluorescence](#)
- [Immunoprecipitation](#)
- [Flow Cytometry](#)
- [Cell Culture](#)

**Anti-NEFH/Nf H Rabbit Monoclonal Antibody - Images**



Western blot analysis of NEFH expression in human brain lysate.