

**Anti-TRF1 TERF1 Rabbit Monoclonal Antibody**  
**Catalog # ABO13519****Specification****Anti-TRF1 TERF1 Rabbit Monoclonal Antibody - Product Information**

Application	WB, IF, ICC
Primary Accession	<a href="#">P54274</a>
Host	Rabbit
Isotype	Rabbit IgG
Reactivity	Human, Mouse
Clonality	Monoclonal
Format	Liquid

**Description**

Anti-TRF1 TERF1 Rabbit Monoclonal Antibody . Tested in WB, ICC/IF applications. This antibody reacts with Human, Mouse.

**Anti-TRF1 TERF1 Rabbit Monoclonal Antibody - Additional Information**

**Gene ID** 7013

**Other Names**

Telomeric repeat-binding factor 1, NIMA-interacting protein 2, TTAGGG repeat-binding factor 1, Telomeric protein Pin2/TRF1, TERF1, PIN2, TRBF1, TRF, TRF1

**Calculated MW**

50246 MW KDa

**Application Details**

WB 1:500-1:2000<br>ICC/IF 1:50-1:200

**Subcellular Localization**

Nucleus. Cytoplasm, cytoskeleton, spindle. Chromosome, telomere. Colocalizes with telomeric DNA in interphase and prophase cells. Telomeric localization decreases in metaphase, anaphase and telophase. Associates with the mitotic spindle.

**Tissue Specificity**

Highly expressed and ubiquitous. Isoform Pin2 predominates.

**Contents**

Rabbit IgG in phosphate buffered saline, pH 7.4, 150mM NaCl, 0.02% sodium azide and 50% glycerol, 0.4-0.5mg/ml BSA.

**Immunogen**

A synthesized peptide derived from human TRF1

**Purification**

Affinity-chromatography

**Storage**

**Store at -20°C for one year. For short term**

**storage and frequent use, store at 4°C for up to one month. Avoid repeated freeze-thaw cycles.**

## **Anti-TRF1 TERF1 Rabbit Monoclonal Antibody - Protein Information**

**Name** TERF1

**Synonyms** PIN2, TRBF1, TRF, TRF1

### **Function**

Binds the telomeric double-stranded 5'-TTAGGG-3' repeat and negatively regulates telomere length. Involved in the regulation of the mitotic spindle. Component of the shelterin complex (telosome) that is involved in the regulation of telomere length and protection. Shelterin associates with arrays of double-stranded 5'-TTAGGG-3' repeats added by telomerase and protects chromosome ends; without its protective activity, telomeres are no longer hidden from the DNA damage surveillance and chromosome ends are inappropriately processed by DNA repair pathways.

### **Cellular Location**

Nucleus. Cytoplasm, cytoskeleton, spindle. Chromosome, telomere. Note=Colocalizes with telomeric DNA in interphase and prophase cells. Telomeric localization decreases in metaphase, anaphase and telophase. Associates with the mitotic spindle (PubMed:11943150). Colocalizes with TRIOBP isoform 1 at the telomeres in interphase (PubMed:24692559)

### **Tissue Location**

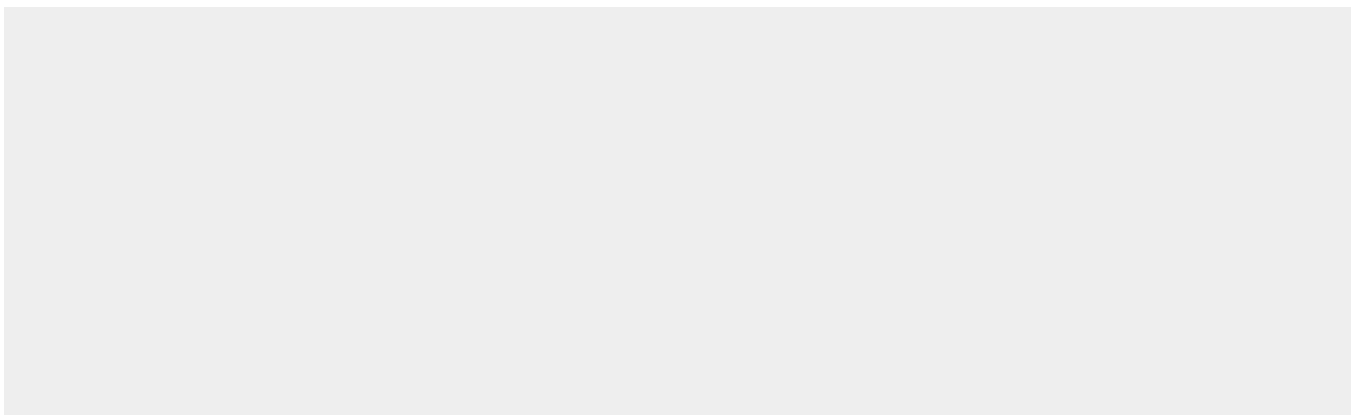
Highly expressed and ubiquitous. Isoform Pin2 predominates

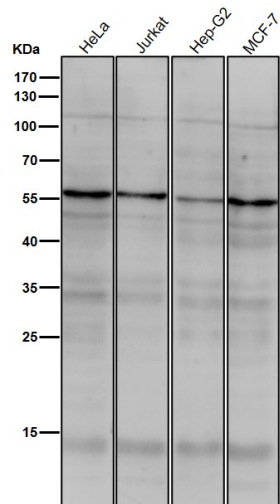
## **Anti-TRF1 TERF1 Rabbit Monoclonal Antibody - Protocols**

Provided below are standard protocols that you may find useful for product applications.

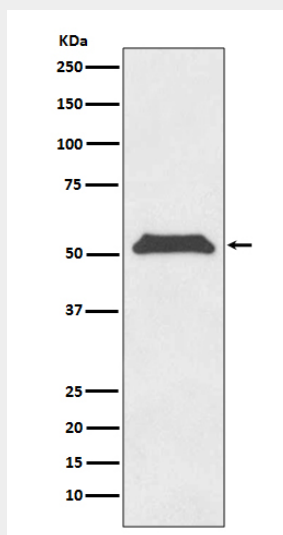
- [Western Blot](#)
- [Blocking Peptides](#)
- [Dot Blot](#)
- [Immunohistochemistry](#)
- [Immunofluorescence](#)
- [Immunoprecipitation](#)
- [Flow Cytometry](#)
- [Cell Culture](#)

## **Anti-TRF1 TERF1 Rabbit Monoclonal Antibody - Images**





All lanes use the Antibody at 1:1K dilution for 1 hour at room temperature.



Western blot analysis of TRF1 expression in HeLa cell lysate.