

**Anti-SDHA Rabbit Monoclonal Antibody**  
**Catalog # ABO13531****Specification**

---

**Anti-SDHA Rabbit Monoclonal Antibody - Product Information**

Application	WB, IHC, IF, ICC, IP, FC
Primary Accession	<a href="#">P31040</a>
Host	Rabbit
Isotype	Rabbit IgG
Reactivity	Rat, Human, Mouse
Clonality	Monoclonal
Format	Liquid

**Description**

Anti-SDHA Rabbit Monoclonal Antibody . Tested in WB, IHC, ICC/IF, IP, Flow Cytometry applications. This antibody reacts with Human, Mouse, Rat.

**Anti-SDHA Rabbit Monoclonal Antibody - Additional Information**

**Gene ID** 6389

**Other Names**

Succinate dehydrogenase [ubiquinone] flavoprotein subunit, mitochondrial, 1.3.5.1, Flavoprotein subunit of complex II, Fp, SDHA, SDH2, SDHF

**Calculated MW**

72692 MW KDa

**Application Details**

WB 1:500-1:2000<br>IHC 1:50-1:200<br>ICC/IF 1:50-1:200<br>IP 1:20<br>FC 1:20

**Subcellular Localization**

Mitochondrion inner membrane; Peripheral membrane protein; Matrix side.

**Contents**

Rabbit IgG in phosphate buffered saline, pH 7.4, 150mM NaCl, 0.02% sodium azide and 50% glycerol, 0.4-0.5mg/ml BSA.

**Immunogen**

A synthesized peptide derived from human SDHA

**Purification**

Affinity-chromatography

**Storage**

**Store at -20°C for one year. For short term storage and frequent use, store at 4°C for up to one month. Avoid repeated freeze-thaw cycles.**

**Anti-SDHA Rabbit Monoclonal Antibody - Protein Information**

## Name SDHA

## Synonyms SDH2, SDHF

## Function

Flavoprotein (FP) subunit of succinate dehydrogenase (SDH) that is involved in complex II of the mitochondrial electron transport chain and is responsible for transferring electrons from succinate to ubiquinone (coenzyme Q) (PubMed:<a href="http://www.uniprot.org/citations/10746566" target="\_blank">10746566</a>, PubMed:<a href="http://www.uniprot.org/citations/24781757" target="\_blank">24781757</a>). SDH also oxidizes malate to the non-canonical enol form of oxaloacetate, enol- oxaloacetate (By similarity). Enol-oxaloacetate, which is a potent inhibitor of the succinate dehydrogenase activity, is further isomerized into keto-oxaloacetate (By similarity). Can act as a tumor suppressor (PubMed:<a href="http://www.uniprot.org/citations/20484225" target="\_blank">20484225</a>).

## Cellular Location

Mitochondrion inner membrane; Peripheral membrane protein; Matrix side

## Anti-SDHA Rabbit Monoclonal Antibody - Protocols

Provided below are standard protocols that you may find useful for product applications.

- [Western Blot](#)
- [Blocking Peptides](#)
- [Dot Blot](#)
- [Immunohistochemistry](#)
- [Immunofluorescence](#)
- [Immunoprecipitation](#)
- [Flow Cytometry](#)
- [Cell Culture](#)

## Anti-SDHA Rabbit Monoclonal Antibody - Images

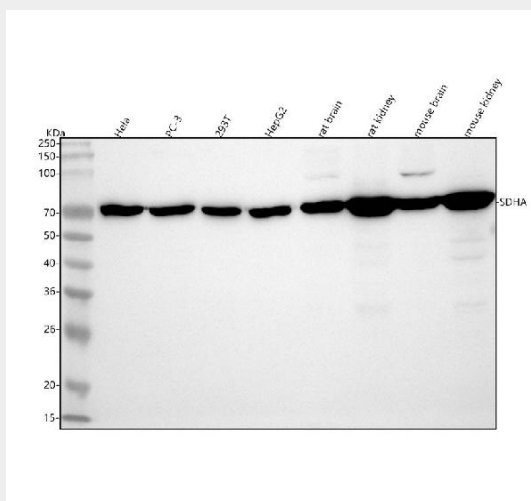


Figure 1. Western blot analysis of SDHA using anti-SDHA antibody (M01753).

Electrophoresis was performed on a 5-20% SDS-PAGE gel at 70V (Stacking gel) / 90V (Resolving gel) for 2-3 hours. The sample well of each lane was loaded with 30 ug of sample under reducing conditions.

Lane 1: human Hela whole cell lysates,  
Lane 2: human PC-3 whole cell lysates,  
Lane 3: human 293T whole cell lysates,  
Lane 4: human HepG2 whole cell lysates,  
Lane 5: rat brain tissue lysates,  
Lane 6: rat kidney tissue lysates,  
Lane 7: mouse brain tissue lysates,  
Lane 8: mouse kidney tissue lysates.

After electrophoresis, proteins were transferred to a nitrocellulose membrane at 150 mA for 50-90 minutes. Blocked the membrane with 5% non-fat milk/TBS for 1.5 hour at RT. The membrane was incubated with rabbit anti-SDHA antigen affinity purified monoclonal antibody (Catalog # M01753) at 1:500 overnight at 4°C, then washed with TBS-0.1%Tween 3 times with 5 minutes each and probed with a goat anti-rabbit IgG-HRP secondary antibody at a dilution of 1:500 for 1.5 hour at RT. The signal is developed using an Enhanced Chemiluminescent detection (ECL) kit (Catalog # EK1002) with Tanon 5200 system. A specific band was detected for SDHA at approximately 73 kDa. The expected band size for SDHA is at 73 kDa.