

Anti-TLR5 Rabbit Monoclonal Antibody
Catalog # ABO13532**Specification**

Anti-TLR5 Rabbit Monoclonal Antibody - Product Information

Application	WB
Primary Accession	O60602
Host	Rabbit
Isotype	Rabbit IgG
Reactivity	Rat, Human, Mouse
Clonality	Monoclonal
Format	Liquid

Description

Anti-TLR5 Rabbit Monoclonal Antibody . Tested in WB application. This antibody reacts with Human, Mouse, Rat.

Anti-TLR5 Rabbit Monoclonal Antibody - Additional Information

Gene ID 7100

Other Names

Toll-like receptor 5, Toll/interleukin-1 receptor-like protein 3, TLR5, TIL3

Calculated MW

97834 MW KDa

Application Details

WB 1:500-1:2000

Subcellular Localization

Membrane ; Single-pass type I membrane protein.

Tissue Specificity

Highly expressed in ovary and in peripheral blood leukocytes, especially in monocytes, less in CD11c+ immature dendritic cells. Also detected in prostate and testis.

Contents

Rabbit IgG in phosphate buffered saline, pH 7.4, 150mM NaCl, 0.02% sodium azide and 50% glycerol, 0.4-0.5mg/ml BSA.

Immunogen

A synthesized peptide derived from human TLR5

Purification

Affinity-chromatography

Storage

Store at -20°C for one year. For short term storage and frequent use, store at 4°C for up to one month. Avoid repeated

freeze-thaw cycles.

Anti-TLR5 Rabbit Monoclonal Antibody - Protein Information

Name TLR5

Synonyms TIL3

Function

Pattern recognition receptor (PRR) located on the cell surface that participates in the activation of innate immunity and inflammatory response (PubMed:11323673, PubMed:18490781). Recognizes small molecular motifs named pathogen-associated molecular pattern (PAMPs) expressed by pathogens and microbe-associated molecular patterns (MAMPs) usually expressed by resident microbiota (PubMed:29934223). Upon ligand binding such as bacterial flagellins, recruits intracellular adapter proteins MYD88 and TRIF leading to NF- kappa-B activation, cytokine secretion and induction of the inflammatory response (PubMed:11489966, PubMed:20855887). Plays thereby an important role in the relationship between the intestinal epithelium and enteric microbes and contributes to the gut microbiota composition throughout life (By similarity).

Cellular Location

Cell membrane; Single-pass type I membrane protein

Tissue Location

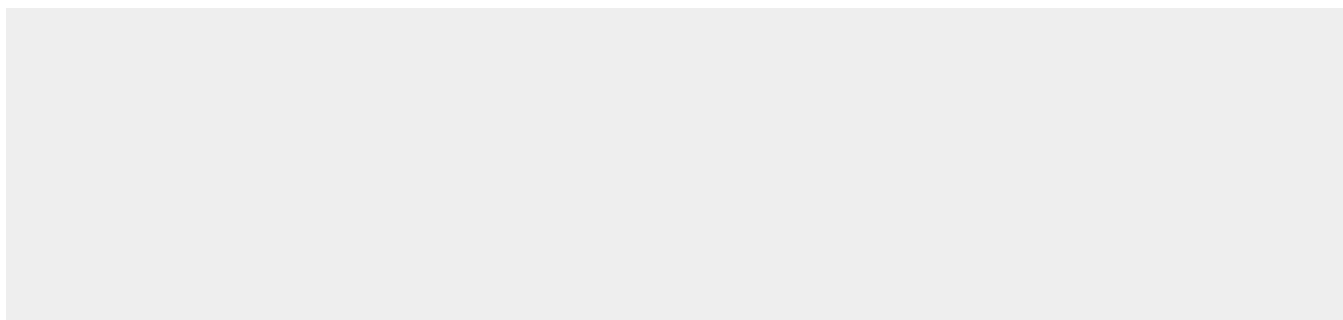
Highly expressed on the basolateral surface of intestinal epithelia (PubMed:11489966). Expressed also in other cells such as lung epithelial cells (PubMed:11489966, PubMed:18490781)

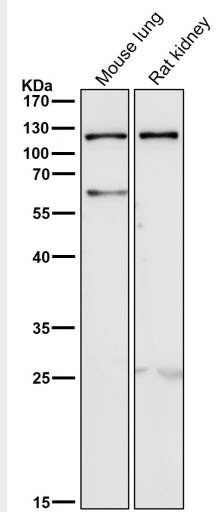
Anti-TLR5 Rabbit Monoclonal Antibody - Protocols

Provided below are standard protocols that you may find useful for product applications.

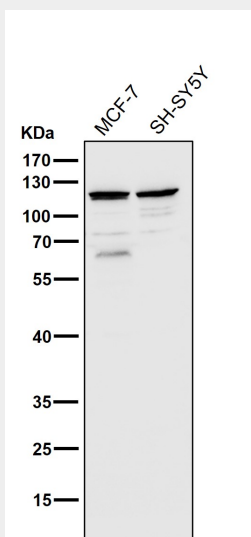
- [Western Blot](#)
- [Blocking Peptides](#)
- [Dot Blot](#)
- [Immunohistochemistry](#)
- [Immunofluorescence](#)
- [Immunoprecipitation](#)
- [Flow Cytometry](#)
- [Cell Culture](#)

Anti-TLR5 Rabbit Monoclonal Antibody - Images

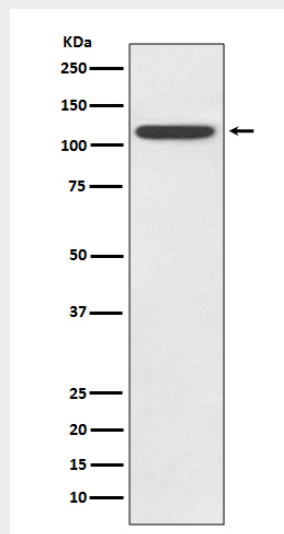




All lanes use the Antibody at 1:2K dilution for 1 hour at room temperature.



All lanes use the Antibody at 1:2K dilution for 1 hour at room temperature.



Western blot analysis of TLR5 expression in HeLa cell lysate.