

Anti-CD41 ITGA2B Rabbit Monoclonal Antibody
Catalog # ABO13538**Specification**

Anti-CD41 ITGA2B Rabbit Monoclonal Antibody - Product Information

Application	WB, IHC
Primary Accession	P08514
Host	Rabbit
Isotype	Rabbit IgG
Reactivity	Human
Clonality	Monoclonal
Format	Liquid

Description

Anti-CD41 ITGA2B Rabbit Monoclonal Antibody . Tested in WB, IHC applications. This antibody reacts with Human.

Anti-CD41 ITGA2B Rabbit Monoclonal Antibody - Additional Information

Gene ID 3674

Other Names

Integrin alpha-IIb, GPalpha IIb, GPIIb, Platelet membrane glycoprotein IIb, CD41, Integrin alpha-IIb heavy chain, Integrin alpha-IIb light chain, form 1, Integrin alpha-IIb light chain, form 2, ITGA2B, GP2B, ITGAB

Calculated MW

113377 MW KDa

Application Details

WB 1:500-1:1000
IHC 1:50-1:200

Subcellular Localization

Membrane; Single-pass type I membrane protein.

Tissue Specificity

Isoform 1 and isoform 2 were identified in platelets and megakaryocytes, but not in reticulocytes or in Jurkat and U-937 white blood cell line. Isoform 3 is expressed by leukemia, prostate adenocarcinoma and melanoma cells but not by platelets or normal prostate or breast epithelial cells.

Contents

Rabbit IgG in phosphate buffered saline, pH 7.4, 150mM NaCl, 0.02% sodium azide and 50% glycerol, 0.4-0.5mg/ml BSA.

Immunogen

A synthesized peptide derived from human CD41

Purification

Affinity-chromatography

Storage

Store at -20°C for one year. For short term storage and frequent use, store at 4°C for up to one month. Avoid repeated freeze-thaw cycles.

Anti-CD41 ITGA2B Rabbit Monoclonal Antibody - Protein Information

Name ITGA2B

Synonyms GP2B, ITGAB

Function

Integrin alpha-IIb/beta-3 is a receptor for fibronectin, fibrinogen, plasminogen, prothrombin, thrombospondin and vitronectin. It recognizes the sequence R-G-D in a wide array of ligands. It recognizes the sequence H-H-L-G-G-G-A-K-Q-A-G-D-V in fibrinogen gamma chain (By similarity). Following activation integrin alpha-IIb/beta-3 brings about platelet/platelet interaction through binding of soluble fibrinogen (PubMed:9111081). This step leads to rapid platelet aggregation which physically plugs ruptured endothelial cell surface (By similarity).

Cellular Location

Membrane; Single-pass type I membrane protein.

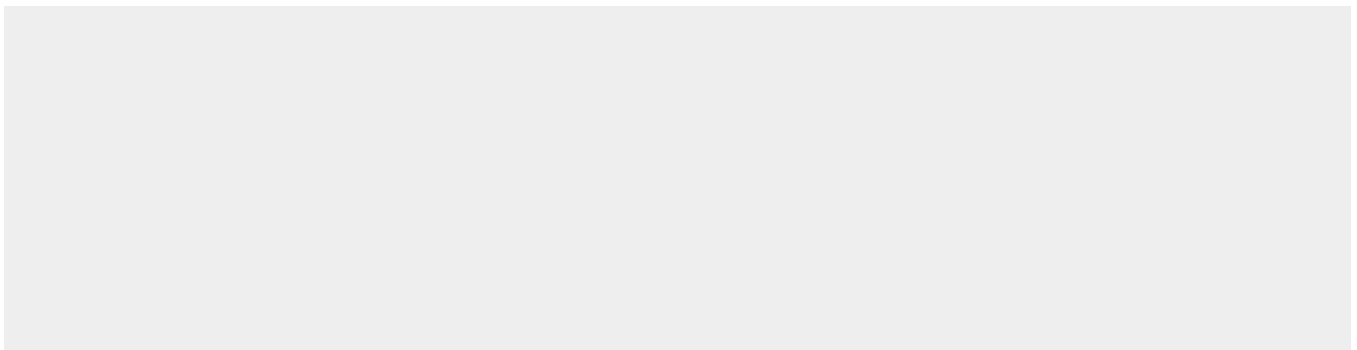
Tissue Location

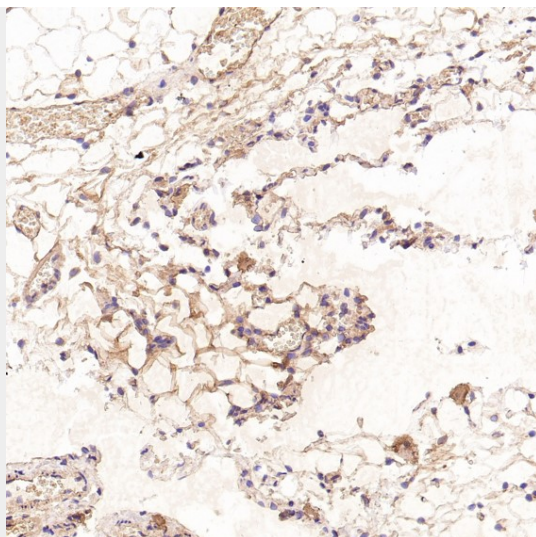
Isoform 1 and isoform 2 are expressed in platelets and megakaryocytes, but not in reticulocytes. Not detected in Jurkat, nor in U937 cell lines (PubMed:2351656). Isoform 3 is expressed in prostate adenocarcinoma, as well as in several erythroleukemia, prostate adenocarcinoma and melanoma cell lines, including PC-3, DU-145, HEL, WM983A, WM983B and WM35. Not detected in platelets, nor in normal prostate (at protein level) (PubMed:9809974)

Anti-CD41 ITGA2B Rabbit Monoclonal Antibody - Protocols

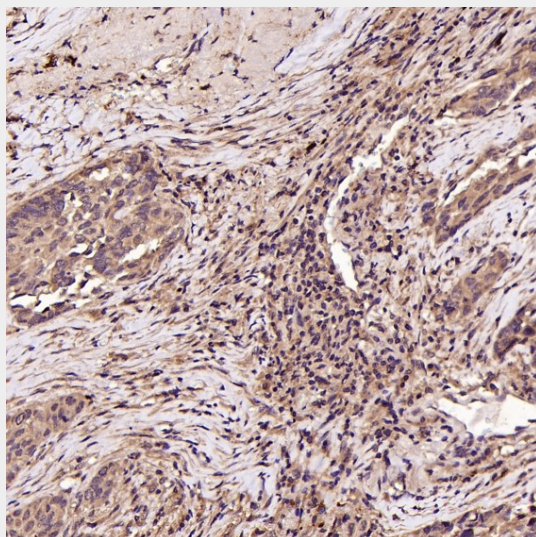
Provided below are standard protocols that you may find useful for product applications.

- [Western Blot](#)
- [Blocking Peptides](#)
- [Dot Blot](#)
- [Immunohistochemistry](#)
- [Immunofluorescence](#)
- [Immunoprecipitation](#)
- [Flow Cytometry](#)
- [Cell Culture](#)

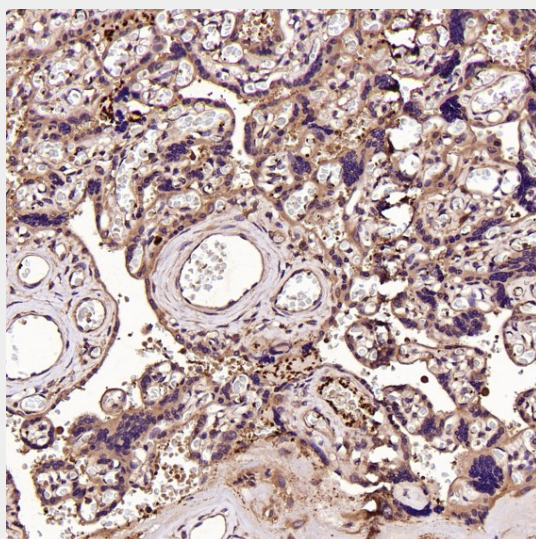
Anti-CD41 ITGA2B Rabbit Monoclonal Antibody - Images



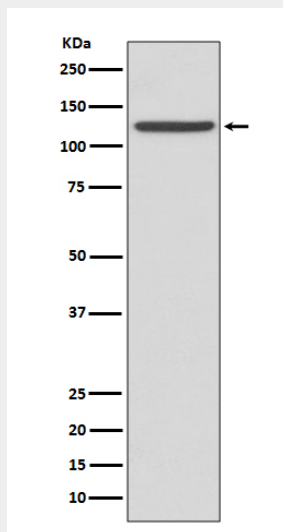
Immunohistochemical analysis of paraffin-embedded Rat pancreas, using the Antibody at 1:50 dilution.



Immunohistochemical analysis of paraffin-embedded Human squamous carcinoma, using the Antibody at 1:50 dilution.



Immunohistochemical analysis of paraffin-embedded Human placenta, using the Antibody at 1:50 dilution.



Western blot analysis of CD41 expression in human fetal liver lysate.