

**Anti-CD26/DPP4 Rabbit Monoclonal Antibody**  
**Catalog # ABO13547****Specification****Anti-CD26/DPP4 Rabbit Monoclonal Antibody - Product Information**

Application	WB
Primary Accession	<a href="#">P27487</a>
Host	Rabbit
Isotype	Rabbit IgG
Reactivity	Rat, Human, Mouse
Clonality	Monoclonal
Format	Liquid

**Description**

Anti-CD26/DPP4 Rabbit Monoclonal Antibody . Tested in WB application. This antibody reacts with Human, Mouse, Rat.

**Anti-CD26/DPP4 Rabbit Monoclonal Antibody - Additional Information**

**Gene ID** 1803

**Other Names**

Dipeptidyl peptidase 4, 3.4.14.5, ADABP, Adenosine deaminase complexing protein 2, ADCP-2, Dipeptidyl peptidase IV, DPP IV, T-cell activation antigen CD26, TP103, CD26, Dipeptidyl peptidase 4 membrane form, Dipeptidyl peptidase IV membrane form, Dipeptidyl peptidase 4 soluble form, Dipeptidyl peptidase IV soluble form, DPP4 ([http://www.genenames.org/cgi-bin/gene\\_symbol\\_report?hgnc\\_id=3009](http://www.genenames.org/cgi-bin/gene_symbol_report?hgnc_id=3009))>HGNC:3009</a>), ADCP2, CD26

**Calculated MW**

88279 MW KDa

**Application Details**

WB 1:500-1:2000

**Subcellular Localization**

Dipeptidyl peptidase 4 soluble form: Secreted. Detected in the serum and the seminal fluid.

**Tissue Specificity**

Expressed specifically in lymphatic vessels but not in blood vessels in the skin, small intestine, esophagus, ovary, breast and prostate glands. Not detected in lymphatic vessels in the lung, kidney, uterus, liver and stomach (at protein level). Expressed in the poorly differentiated crypt cells of the small intestine as well as in the mature villous cells. Expressed at very low levels in the colon..

**Contents**

Rabbit IgG in phosphate buffered saline, pH 7.4, 150mM NaCl, 0.02% sodium azide and 50% glycerol, 0.4-0.5mg/ml BSA.

**Immunogen**

A synthesized peptide derived from human CD26

#### **Purification**

Affinity-chromatography

#### **Storage**

**Store at -20°C for one year. For short term storage and frequent use, store at 4°C for up to one month. Avoid repeated freeze-thaw cycles.**

### **Anti-CD26/DPP4 Rabbit Monoclonal Antibody - Protein Information**

**Name** DPP4 ([HGNC:3009](#))

**Synonyms** ADCP2, CD26

#### **Function**

Cell surface glycoprotein receptor involved in the costimulatory signal essential for T-cell receptor (TCR)-mediated T- cell activation (PubMed:<a href="http://www.uniprot.org/citations/10900005" target="\_blank">10900005</a>, PubMed:<a href="http://www.uniprot.org/citations/10951221" target="\_blank">10951221</a>, PubMed:<a href="http://www.uniprot.org/citations/11772392" target="\_blank">11772392</a>, PubMed:<a href="http://www.uniprot.org/citations/17287217" target="\_blank">17287217</a>). Acts as a positive regulator of T-cell coactivation, by binding at least ADA, CAV1, IGF2R, and PTPRC (PubMed:<a href="http://www.uniprot.org/citations/10900005" target="\_blank">10900005</a>, PubMed:<a href="http://www.uniprot.org/citations/10951221" target="\_blank">10951221</a>, PubMed:<a href="http://www.uniprot.org/citations/11772392" target="\_blank">11772392</a>, PubMed:<a href="http://www.uniprot.org/citations/14691230" target="\_blank">14691230</a>). Its binding to CAV1 and CARD11 induces T-cell proliferation and NF-kappa-B activation in a T-cell receptor/CD3-dependent manner (PubMed:<a href="http://www.uniprot.org/citations/17287217" target="\_blank">17287217</a>). Its interaction with ADA also regulates lymphocyte-epithelial cell adhesion (PubMed:<a href="http://www.uniprot.org/citations/11772392" target="\_blank">11772392</a>). In association with FAP is involved in the pericellular proteolysis of the extracellular matrix (ECM), the migration and invasion of endothelial cells into the ECM (PubMed:<a href="http://www.uniprot.org/citations/10593948" target="\_blank">10593948</a>, PubMed:<a href="http://www.uniprot.org/citations/16651416" target="\_blank">16651416</a>). May be involved in the promotion of lymphatic endothelial cells adhesion, migration and tube formation (PubMed:<a href="http://www.uniprot.org/citations/18708048" target="\_blank">18708048</a>). When overexpressed, enhanced cell proliferation, a process inhibited by GPC3 (PubMed:<a href="http://www.uniprot.org/citations/17549790" target="\_blank">17549790</a>). Also acts as a serine exopeptidase with a dipeptidyl peptidase activity that regulates various physiological processes by cleaving peptides in the circulation, including many chemokines, mitogenic growth factors, neuropeptides and peptide hormones such as brain natriuretic peptide 32 (PubMed:<a href="http://www.uniprot.org/citations/10570924" target="\_blank">10570924</a>, PubMed:<a href="http://www.uniprot.org/citations/16254193" target="\_blank">16254193</a>). Removes N-terminal dipeptides sequentially from polypeptides having unsubstituted N-termini provided that the penultimate residue is proline (PubMed:<a href="http://www.uniprot.org/citations/10593948" target="\_blank">10593948</a>).

#### **Cellular Location**

[Dipeptidyl peptidase 4 soluble form]: Secreted Note=Detected in the serum and the seminal fluid

#### **Tissue Location**

Expressed specifically in lymphatic vessels but not in blood vessels in the skin, small intestine, esophagus, ovary, breast and prostate glands. Not detected in lymphatic vessels in the lung, kidney, uterus, liver and stomach (at protein level). Expressed in the poorly differentiated crypt

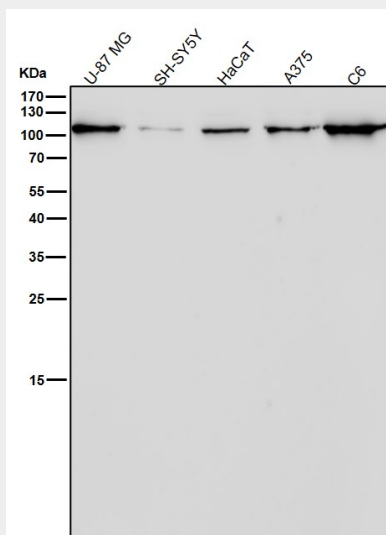
cells of the small intestine as well as in the mature villous cells. Expressed at very low levels in the colon

### Anti-CD26/DPP4 Rabbit Monoclonal Antibody - Protocols

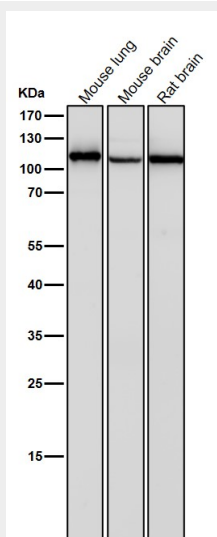
Provided below are standard protocols that you may find useful for product applications.

- [Western Blot](#)
- [Blocking Peptides](#)
- [Dot Blot](#)
- [Immunohistochemistry](#)
- [Immunofluorescence](#)
- [Immunoprecipitation](#)
- [Flow Cytometry](#)
- [Cell Culture](#)

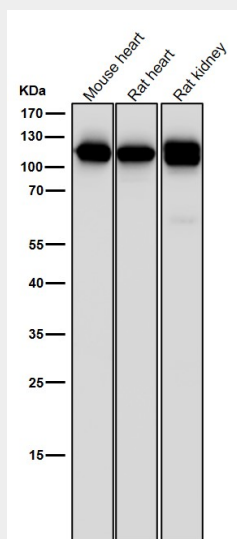
### Anti-CD26/DPP4 Rabbit Monoclonal Antibody - Images



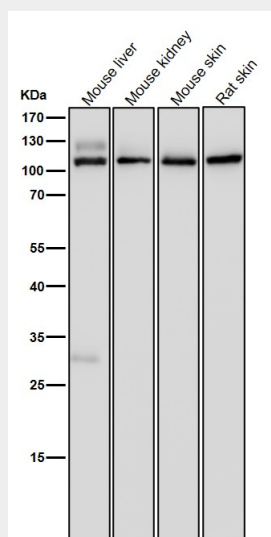
All lanes use the Antibody at 1:1W dilution for 1 hour at room temperature.



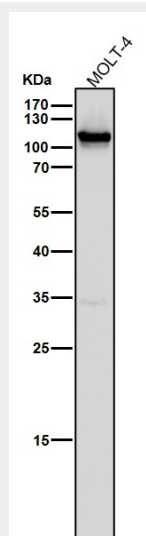
All lanes use the Antibody at 1:1W dilution for 1 hour at room temperature.



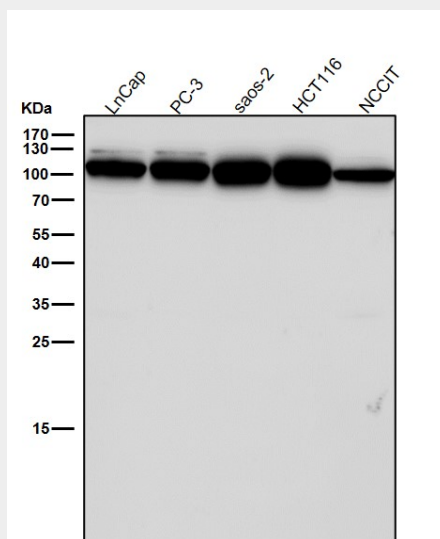
All lanes use the Antibody at 1:1W dilution for 1 hour at room temperature.



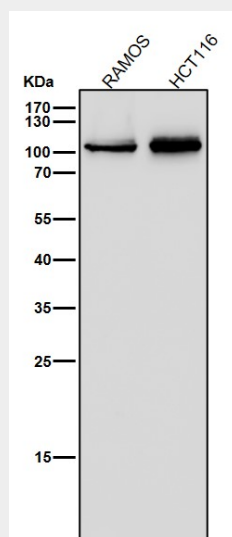
All lanes use the Antibody at 1:1W dilution for 1 hour at room temperature.



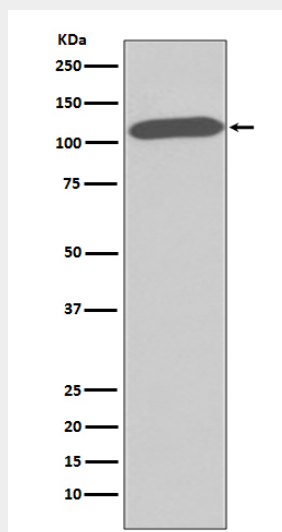
All lanes use the Antibody at 1:1W dilution for 1 hour at room temperature.



All lanes use the Antibody at 1:1W dilution for 1 hour at room temperature.



All lanes use the Antibody at 1:1W dilution for 1 hour at room temperature.



Western blot analysis of CD26 expression in HUVEC cell lysate.