

Anti-GDNF Rabbit Monoclonal Antibody
Catalog # ABO13556**Specification**

Anti-GDNF Rabbit Monoclonal Antibody - Product Information

Application	WB, FC
Primary Accession	P39905
Host	Rabbit
Isotype	Rabbit IgG
Reactivity	Rat, Human, Mouse
Clonality	Monoclonal
Format	Liquid

Description

Anti-GDNF Rabbit Monoclonal Antibody . Tested in WB, Flow Cytometry applications. This antibody reacts with Human, Mouse, Rat.

Anti-GDNF Rabbit Monoclonal Antibody - Additional Information

Gene ID 2668

Other Names

Glial cell line-derived neurotrophic factor, hGDNF, Astrocyte-derived trophic factor, ATF, GDNF

Calculated MW

23720 MW KDa

Application Details

WB 1:500-1:2000
FC 1:50

Subcellular Localization

Secreted.

Tissue Specificity

In the brain, predominantly expressed in the striatum with highest levels in the caudate and lowest in the putamen. Isoform 2 is absent from most tissues except for low levels in intestine and kidney. Highest expression of isoform 3 is found in pancreatic islets. Isoform 5 is expressed at very low levels in putamen, nucleus accumbens, prefrontal cortex, amygdala, hypothalamus and intestine. Isoform 3 is up-regulated in the middle temporal gyrus of Alzheimer disease patients while isoform 2 shows no change..

Contents

Rabbit IgG in phosphate buffered saline, pH 7.4, 150mM NaCl, 0.02% sodium azide and 50% glycerol, 0.4-0.5mg/ml BSA.

Immunogen

A synthesized peptide derived from human GDNF

Purification

Affinity-chromatography

Storage

Store at -20°C for one year. For short term storage and frequent use, store at 4°C for up to one month. Avoid repeated freeze-thaw cycles.

Anti-GDNF Rabbit Monoclonal Antibody - Protein Information**Name** GDNF**Function**

Neurotrophic factor that enhances survival and morphological differentiation of dopaminergic neurons and increases their high- affinity dopamine uptake (PubMed:8493557). Acts by binding to its coreceptor, GFRA1, leading to autophosphorylation and activation of the RET receptor (PubMed:10829012, PubMed:25242331, PubMed:31535977). Involved in the development of the neural crest (PubMed:15242795).

Cellular Location

Secreted

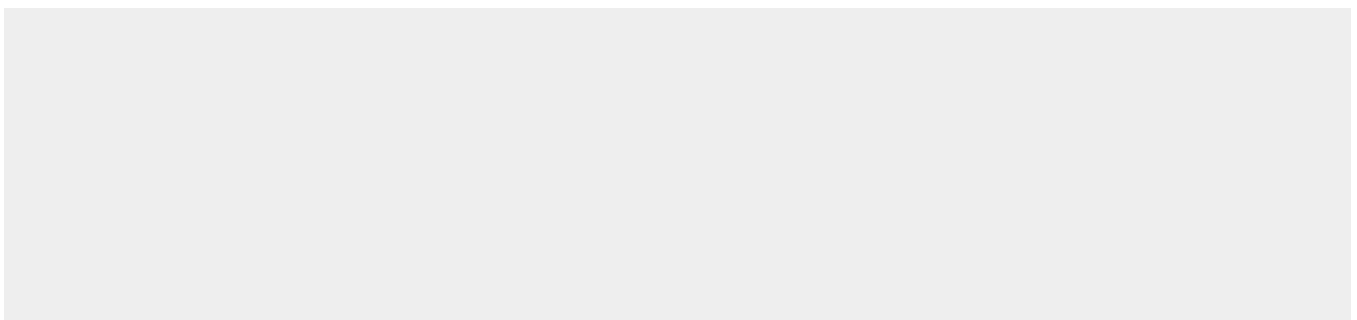
Tissue Location

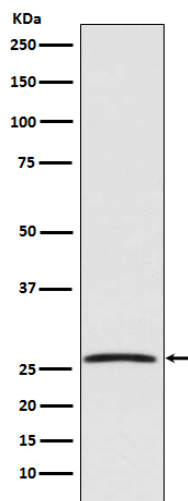
In the brain, predominantly expressed in the striatum with highest levels in the caudate and lowest in the putamen Isoform 2 is absent from most tissues except for low levels in intestine and kidney. Highest expression of isoform 3 is found in pancreatic islets. Isoform 5 is expressed at very low levels in putamen, nucleus accumbens, prefrontal cortex, amygdala, hypothalamus and intestine. Isoform 3 is up-regulated in the middle temporal gyrus of Alzheimer disease patients while isoform 2 shows no change

Anti-GDNF Rabbit Monoclonal Antibody - Protocols

Provided below are standard protocols that you may find useful for product applications.

- [Western Blot](#)
- [Blocking Peptides](#)
- [Dot Blot](#)
- [Immunohistochemistry](#)
- [Immunofluorescence](#)
- [Immunoprecipitation](#)
- [Flow Cytometry](#)
- [Cell Culture](#)

Anti-GDNF Rabbit Monoclonal Antibody - Images



Western blot analysis of GDNF expression in HepG2 cell lysate.