

Anti-MKLP1 KIF23 Rabbit Monoclonal Antibody
Catalog # ABO13570**Specification**

Anti-MKLP1 KIF23 Rabbit Monoclonal Antibody - Product Information

Application	WB, IF, ICC
Primary Accession	Q02241
Host	Rabbit
Isotype	Rabbit IgG
Reactivity	Rat, Human, Mouse
Clonality	Monoclonal
Format	Liquid

Description

Anti-MKLP1 KIF23 Rabbit Monoclonal Antibody . Tested in WB, ICC/IF applications. This antibody reacts with Human, Mouse, Rat.

Anti-MKLP1 KIF23 Rabbit Monoclonal Antibody - Additional Information

Gene ID 9493

Other Names

Kinesin-like protein KIF23, Kinesin-like protein 5, Mitotic kinesin-like protein 1, KIF23, KNSL5, MKLP1

Calculated MW

110059 MW KDa

Application Details

WB 1:500-1:2000
ICC/IF 1:50-1:200

Subcellular Localization

Nucleus. Cytoplasm, cytoskeleton, spindle. Midbody. Localizes to the interzone of mitotic spindles. Detected at the midbody during later stages of mitotic cytokinesis.

Contents

Rabbit IgG in phosphate buffered saline, pH 7.4, 150mM NaCl, 0.02% sodium azide and 50% glycerol, 0.4-0.5mg/ml BSA.

Immunogen

A synthesized peptide derived from human MKLP1

Purification

Affinity-chromatography

Storage

Store at -20°C for one year. For short term storage and frequent use, store at 4°C for up to one month. Avoid repeated freeze-thaw cycles.

Anti-MKLP1 KIF23 Rabbit Monoclonal Antibody - Protein Information

Name KIF23

Synonyms KNSL5, MKLP1

Function

Component of the centralspindlin complex that serves as a microtubule-dependent and Rho-mediated signaling required for the myosin contractile ring formation during the cell cycle cytokinesis. Essential for cytokinesis in Rho-mediated signaling. Required for the localization of ECT2 to the central spindle. Plus-end-directed motor enzyme that moves antiparallel microtubules in vitro.

Cellular Location

Nucleus. Cytoplasm, cytoskeleton, spindle. Midbody, Midbody ring. Note=Localizes to the interzone of mitotic spindles. Detected at the midbody during later stages of mitotic cytokinesis

Tissue Location

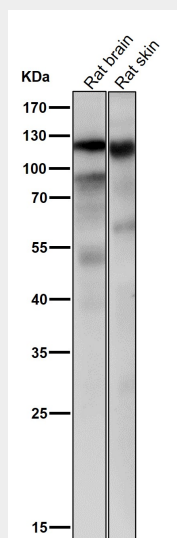
Widely expressed..

Anti-MKLP1 KIF23 Rabbit Monoclonal Antibody - Protocols

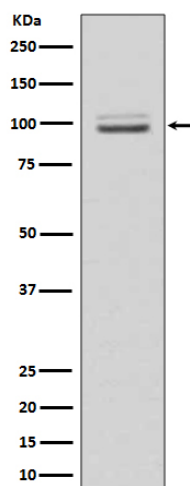
Provided below are standard protocols that you may find useful for product applications.

- [Western Blot](#)
- [Blocking Peptides](#)
- [Dot Blot](#)
- [Immunohistochemistry](#)
- [Immunofluorescence](#)
- [Immunoprecipitation](#)
- [Flow Cytometry](#)
- [Cell Culture](#)

Anti-MKLP1 KIF23 Rabbit Monoclonal Antibody - Images



All lanes use the Antibody at 1:1K dilution for 1 hour at room temperature.



Western blot analysis of MKLP1 expression in HeLa cell lysate.