

Anti-RNF20 Rabbit Monoclonal Antibody
Catalog # ABO13572**Specification**

Anti-RNF20 Rabbit Monoclonal Antibody - Product Information

Application	WB, IF, ICC, IP, FC
Primary Accession	Q5VTR2
Host	Rabbit
Isotype	Rabbit IgG
Reactivity	Human, Mouse
Clonality	Monoclonal
Format	Liquid

Description

Anti-RNF20 Rabbit Monoclonal Antibody . Tested in WB, ICC/IF, IP, Flow Cytometry applications.
This antibody reacts with Human, Mouse.

Anti-RNF20 Rabbit Monoclonal Antibody - Additional Information

Gene ID 56254

Other Names

E3 ubiquitin-protein ligase BRE1A, BRE1-A, hBRE1, 2.3.2.27, RING finger protein 20, RING-type E3 ubiquitin transferase BRE1A, RNF20, BRE1A

Calculated MW

113662 MW KDa

Application Details

WB 1:500-1:2000
ICC/IF 1:50-1:200
IP 1:50
FC 1:50

Subcellular Localization

Nucleus.

Tissue Specificity

Expressed in the normal brain and also in malignant gliomas (at protein level)..

Contents

Rabbit IgG in phosphate buffered saline, pH 7.4, 150mM NaCl, 0.02% sodium azide and 50% glycerol, 0.4-0.5mg/ml BSA.

Immunogen

A synthesized peptide derived from human RNF20

Purification

Affinity-chromatography

Storage

Store at -20°C for one year. For short term storage and frequent use, store at 4°C for up to one month. Avoid repeated

freeze-thaw cycles.

Anti-RNF20 Rabbit Monoclonal Antibody - Protein Information

Name RNF20

Synonyms BRE1A

Function

Component of the RNF20/40 E3 ubiquitin-protein ligase complex that mediates monoubiquitination of 'Lys-120' of histone H2B (H2BK120ub1). H2BK120ub1 gives a specific tag for epigenetic transcriptional activation and is also prerequisite for histone H3 'Lys-4' and 'Lys-79' methylation (H3K4me and H3K79me, respectively). It thereby plays a central role in histone code and gene regulation. The RNF20/40 complex forms a H2B ubiquitin ligase complex in cooperation with the E2 enzyme UBE2A or UBE2B; reports about the cooperation with UBE2E1/UBCH are contradictory. Required for transcriptional activation of Hox genes. Recruited to the MDM2 promoter, probably by being recruited by p53/TP53, and thereby acts as a transcriptional coactivator. Mediates the polyubiquitination of isoform 2 of PA2G4 in cancer cells leading to its proteasome-mediated degradation.

Cellular Location

Nucleus

Tissue Location

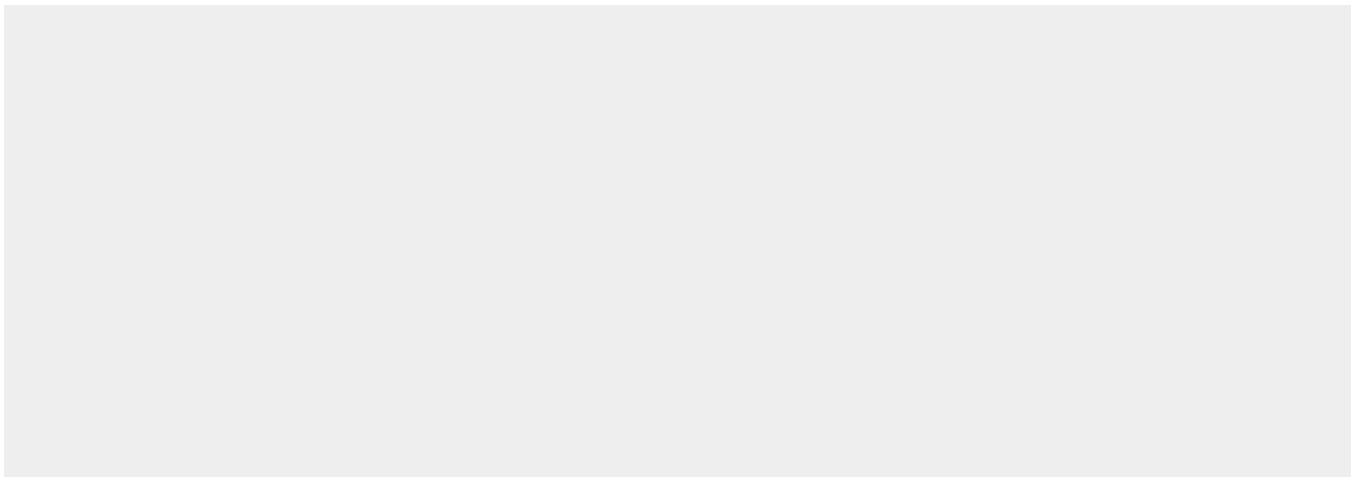
Expressed in the normal brain and also in malignant gliomas (at protein level).

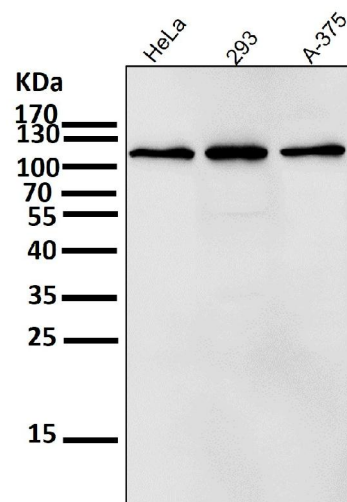
Anti-RNF20 Rabbit Monoclonal Antibody - Protocols

Provided below are standard protocols that you may find useful for product applications.

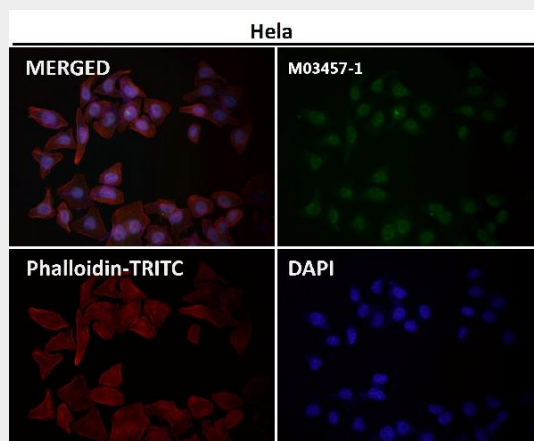
- [Western Blot](#)
- [Blocking Peptides](#)
- [Dot Blot](#)
- [Immunohistochemistry](#)
- [Immunofluorescence](#)
- [Immunoprecipitation](#)
- [Flow Cytometry](#)
- [Cell Culture](#)

Anti-RNF20 Rabbit Monoclonal Antibody - Images

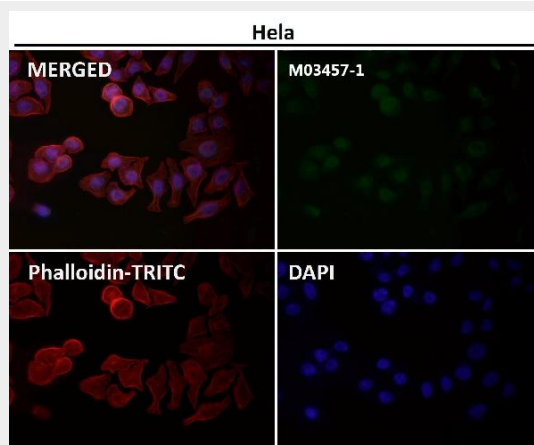




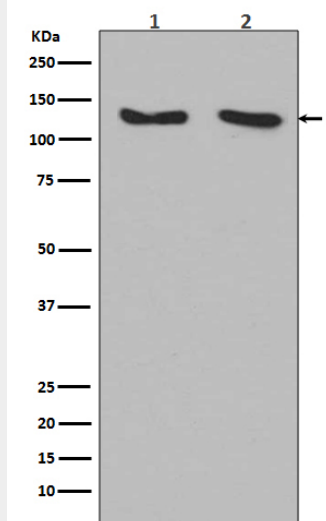
All lanes use the Antibody at 1:1K dilution for 1 hour at room temperature.



Immunofluorescent analysis using the Antibody at 1:50 dilution.



Immunofluorescent analysis using the Antibody at 1:150 dilution.



Western blot analysis of RNF20 expression in (1) 293 cell lysate; (2) HeLa cell lysate.