

**Anti-PTBP2 Rabbit Monoclonal Antibody**  
**Catalog # ABO13582****Specification****Anti-PTBP2 Rabbit Monoclonal Antibody - Product Information**

Application	WB, IHC, IF, ICC
Primary Accession	<a href="#">Q9UKA9</a>
Host	Rabbit
Isotype	Rabbit IgG
Reactivity	Rat, Human, Mouse
Clonality	Monoclonal
Format	Liquid

**Description**

Anti-PTBP2 Rabbit Monoclonal Antibody . Tested in WB, IHC, ICC/IF applications. This antibody reacts with Human, Mouse, Rat.

**Anti-PTBP2 Rabbit Monoclonal Antibody - Additional Information**

**Gene ID** 58155

**Other Names**

Polypyrimidine tract-binding protein 2, Neural polypyrimidine tract-binding protein, Neurally-enriched homolog of PTB, PTB-like protein, PTBP2 ([http://www.genenames.org/cgi-bin/gene\\_symbol\\_report?hgnc\\_id=17662](http://www.genenames.org/cgi-bin/gene_symbol_report?hgnc_id=17662)) HGNC:17662, NPTB, PTB, PTBLP

**Calculated MW**

57491 MW KDa

**Application Details**

WB 1:500-1:2000 IHC 1:50-1:200 ICC/IF 1:50-1:200

**Subcellular Localization**

Nucleus.

**Tissue Specificity**

Mainly expressed in brain although also detected in other tissues like heart and skeletal muscle. Isoform 1 and isoform 2 are specifically expressed in neuronal tissues. Isoform 3 and isoform 4 are expressed in non-neuronal tissues. Isoform 5 and isoform 6 are truncated forms expressed in non-neuronal tissues..

**Contents**

Rabbit IgG in phosphate buffered saline, pH 7.4, 150mM NaCl, 0.02% sodium azide and 50% glycerol, 0.4-0.5mg/ml BSA.

**Immunogen**

A synthesized peptide derived from human PTBP2

**Purification**

Affinity-chromatography

Storage

**Store at -20°C for one year. For short term storage and frequent use, store at 4°C for up to one month. Avoid repeated freeze-thaw cycles.**

## **Anti-PTBP2 Rabbit Monoclonal Antibody - Protein Information**

**Name** PTBP2 ([HGNC:17662](#))

**Synonyms** NPTB, PTB, PTBLP

### **Function**

RNA-binding protein which binds to intronic polypyrimidine tracts and mediates negative regulation of exons splicing. May antagonize in a tissue-specific manner the ability of NOVA1 to activate exon selection. In addition to its function in pre-mRNA splicing, plays also a role in the regulation of translation.

### **Cellular Location**

Nucleus {ECO:0000250|UniProtKB:Q91Z31}.

### **Tissue Location**

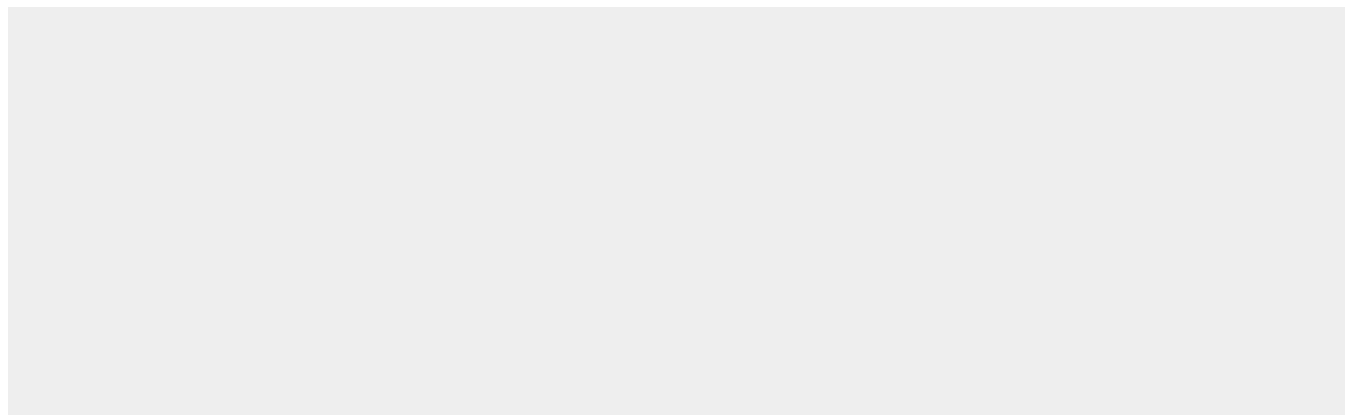
Mainly expressed in brain although also detected in other tissues like heart and skeletal muscle. Isoform 1 and isoform 2 are specifically expressed in neuronal tissues. Isoform 3 and isoform 4 are expressed in non-neuronal tissues. Isoform 5 and isoform 6 are truncated forms expressed in non-neuronal tissues

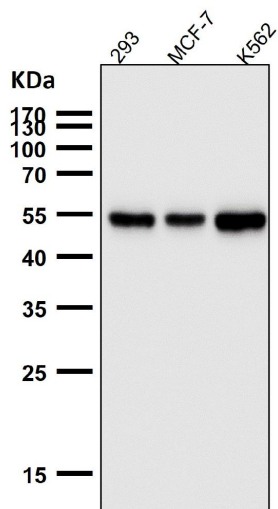
## **Anti-PTBP2 Rabbit Monoclonal Antibody - Protocols**

Provided below are standard protocols that you may find useful for product applications.

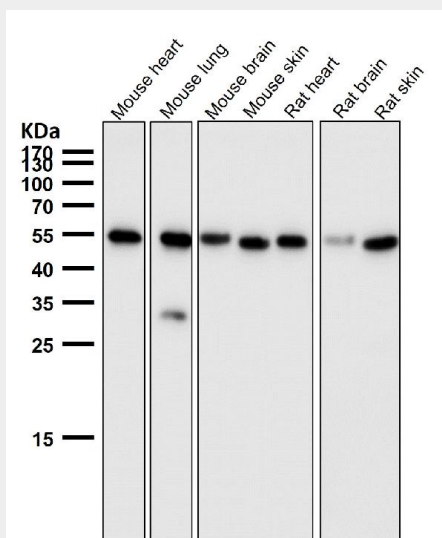
- [Western Blot](#)
- [Blocking Peptides](#)
- [Dot Blot](#)
- [Immunohistochemistry](#)
- [Immunofluorescence](#)
- [Immunoprecipitation](#)
- [Flow Cytometry](#)
- [Cell Culture](#)

## **Anti-PTBP2 Rabbit Monoclonal Antibody - Images**

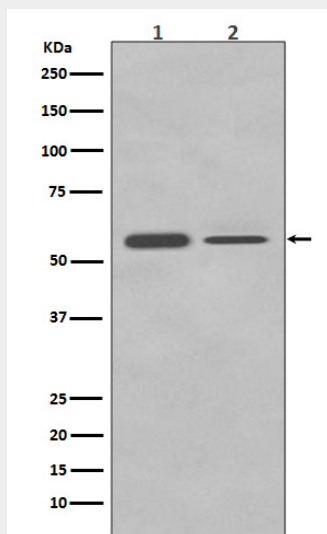




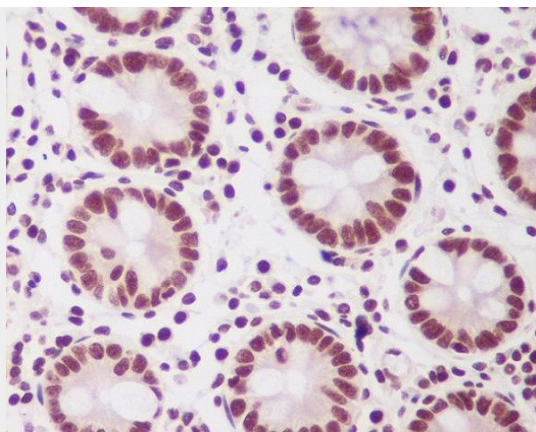
All lanes use the Antibody at 1:3K dilution for 1 hour at room temperature.



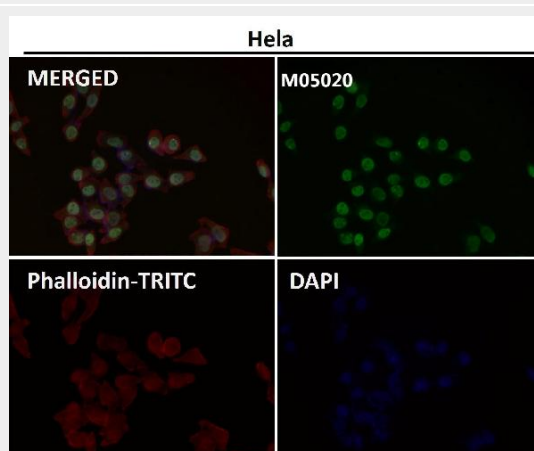
All lanes use the Antibody at 1:3K dilution for 1 hour at room temperature.



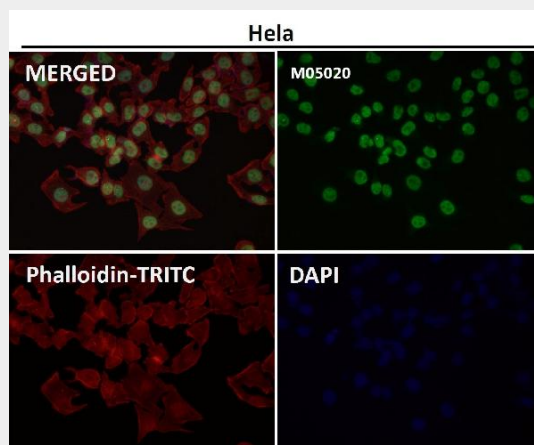
Western blot analysis of PTBP2 in (1) Neuro-2a cell lysate; (2) HeLa cell lysate.



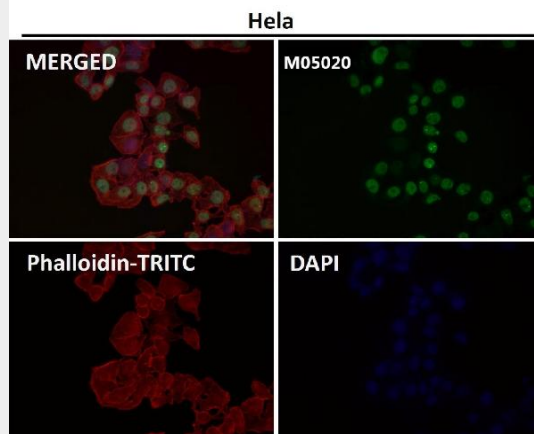
Immunohistochemical analysis of paraffin-embedded human colon, using PTBP2 Antibody.



Immunofluorescent analysis using the Antibody at 1:50 dilution.



Immunofluorescent analysis using the Antibody at 1:150 dilution.



Immunofluorescent analysis using the Antibody at 1:500 dilution.