

**Anti-Olig2 Rabbit Monoclonal Antibody**  
Catalog # ABO13586

**Specification**

---

**Anti-Olig2 Rabbit Monoclonal Antibody - Product Information**

Application	WB, IHC, IF, ICC
Primary Accession	<a href="#">O13516</a>
Host	Rabbit
Isotype	Rabbit IgG
Reactivity	Rat, Human, Mouse
Clonality	Monoclonal
Format	Liquid

**Description**

Anti-Olig2 Rabbit Monoclonal Antibody . Tested in WB, IHC, ICC/IF applications. This antibody reacts with Human, Mouse, Rat.

**Anti-Olig2 Rabbit Monoclonal Antibody - Additional Information**

**Gene ID** 10215

**Other Names**

Oligodendrocyte transcription factor 2, Oligo2, Class B basic helix-loop-helix protein 1, bHLHb1, Class E basic helix-loop-helix protein 19, bHLHe19, Protein kinase C-binding protein 2, Protein kinase C-binding protein RACK17, OLIG2, BHLHB1, BHLHE19, PRKCBP2, RACK17

**Calculated MW**

32385 MW KDa

**Application Details**

WB 1:500-1:2000<br>IHC 1:50-1:200<br>ICC/IF 1:50-1:200

**Subcellular Localization**

Nucleus. Cytoplasm. The NLS contained in the bHLH domain could be masked in the native form and translocation to the nucleus could be mediated by interaction either with class E bHLH partner protein or with NKX2-2..

**Tissue Specificity**

Expressed in the brain, in oligodendrocytes. Strongly expressed in oligodendrogliomas, while expression is weak to moderate in astrocytomas. Expression in glioblastomas highly variable..

**Contents**

Rabbit IgG in phosphate buffered saline, pH 7.4, 150mM NaCl, 0.02% sodium azide and 50% glycerol, 0.4-0.5mg/ml BSA.

**Immunogen**

A synthesized peptide derived from human Olig2

**Purification**

Affinity-chromatography

## Storage

**Store at -20°C for one year. For short term storage and frequent use, store at 4°C for up to one month. Avoid repeated freeze-thaw cycles.**

## Anti-Olig2 Rabbit Monoclonal Antibody - Protein Information

**Name** OLIG2

**Synonyms** BHLHB1, BHLHE19, PRKCBP2, RACK17

### Function

Required for oligodendrocyte and motor neuron specification in the spinal cord, as well as for the development of somatic motor neurons in the hindbrain. Functions together with ZNF488 to promote oligodendrocyte differentiation. Cooperates with OLIG1 to establish the pMN domain of the embryonic neural tube. Antagonist of V2 interneuron and of NKX2-2-induced V3 interneuron development.

### Cellular Location

Nucleus {ECO:0000255|PROSITE-ProRule:PRU00981}. Cytoplasm. Note=The NLS contained in the bHLH domain could be masked in the native form and translocation to the nucleus could be mediated by interaction either with class E bHLH partner protein or with NKX2-2.

### Tissue Location

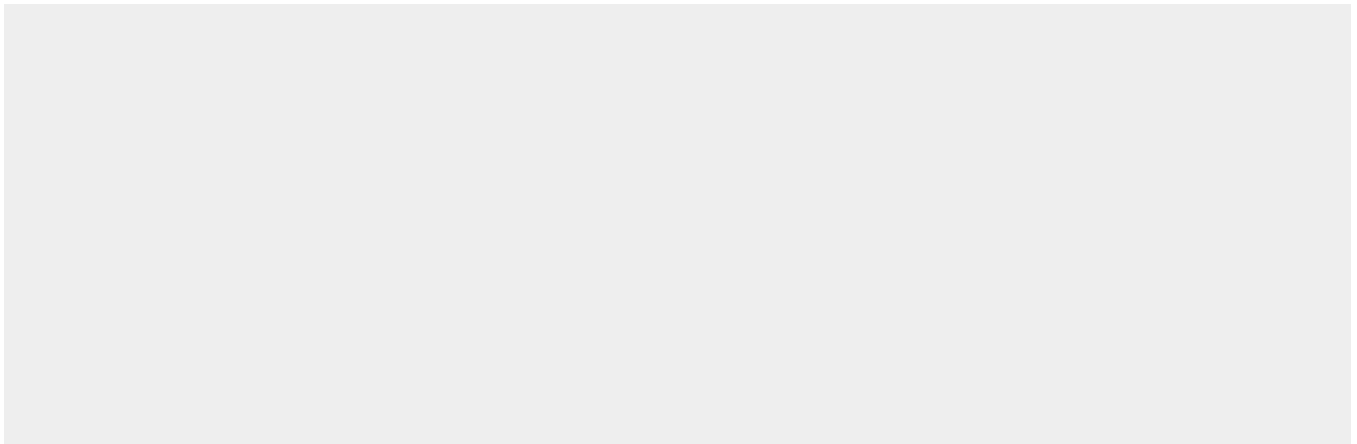
Expressed in the brain, in oligodendrocytes. Strongly expressed in oligodendrogliomas, while expression is weak to moderate in astrocytomas. Expression in glioblastomas highly variable

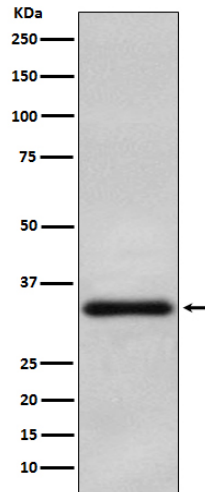
## Anti-Olig2 Rabbit Monoclonal Antibody - Protocols

Provided below are standard protocols that you may find useful for product applications.

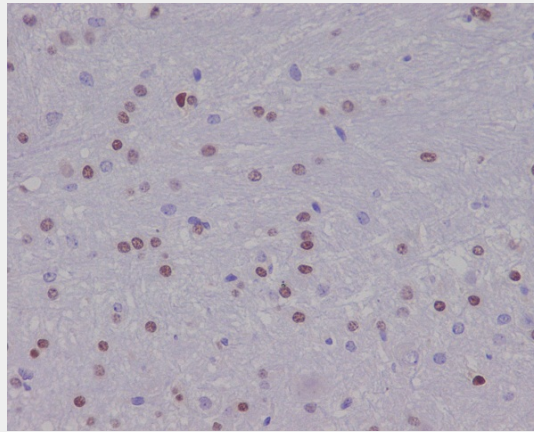
- [Western Blot](#)
- [Blocking Peptides](#)
- [Dot Blot](#)
- [Immunohistochemistry](#)
- [Immunofluorescence](#)
- [Immunoprecipitation](#)
- [Flow Cytometry](#)
- [Cell Culture](#)

## Anti-Olig2 Rabbit Monoclonal Antibody - Images





Western blot analysis of Olig2 in Human oligodendrogloma lysate.



Immunohistochemical analysis of paraffin-embedded human mouse brain, using Olig2 Antibody.