

Anti-CCL19/Mip 3 Beta Rabbit Monoclonal Antibody
Catalog # ABO13592**Specification****Anti-CCL19/Mip 3 Beta Rabbit Monoclonal Antibody - Product Information**

Application	WB
Primary Accession	Q99731
Host	Rabbit
Isotype	Rabbit IgG
Reactivity	Human
Clonality	Monoclonal
Format	Liquid

Description

Anti-CCL19/Mip 3 Beta Rabbit Monoclonal Antibody . Tested in WB application. This antibody reacts with Human.

Anti-CCL19/Mip 3 Beta Rabbit Monoclonal Antibody - Additional Information

Gene ID 6363

Other Names

C-C motif chemokine 19, Beta-chemokine exodus-3, CK beta-11, Epstein-Barr virus-induced molecule 1 ligand chemokine, EBI1 ligand chemokine, ELC, Macrophage inflammatory protein 3 beta, MIP-3-beta, Small-inducible cytokine A19, CCL19, ELC, MIP3B, SCYA19

Calculated MW

10993 MW KDa

Application Details

WB 1:500-1:2000

Subcellular Localization

Secreted.

Tissue Specificity

Expressed at high levels in the lymph nodes, thymus and appendix. Intermediate levels seen in colon and trachea, while low levels found in spleen, small intestine, lung, kidney and stomach.

Contents

Rabbit IgG in phosphate buffered saline, pH 7.4, 150mM NaCl, 0.02% sodium azide and 50% glycerol, 0.4-0.5mg/ml BSA.

Immunogen

A synthesized peptide derived from human CCL19

Purification

Affinity-chromatography

Storage

Store at -20°C for one year. For short term

storage and frequent use, store at 4°C for up to one month. Avoid repeated freeze-thaw cycles.

Anti-CCL19/Mip 3 Beta Rabbit Monoclonal Antibody - Protein Information

Name CCL19

Synonyms ELC, MIP3B, SCYA19

Function

May play a role not only in inflammatory and immunological responses but also in normal lymphocyte recirculation and homing. May play an important role in trafficking of T-cells in thymus, and T-cell and B-cell migration to secondary lymphoid organs. Binds to chemokine receptor CCR7. Recombinant CCL19 shows potent chemotactic activity for T-cells and B-cells but not for granulocytes and monocytes. Binds to atypical chemokine receptor ACKR4 and mediates the recruitment of beta- arrestin (ARRB1/2) to ACKR4.

Cellular Location

Secreted.

Tissue Location

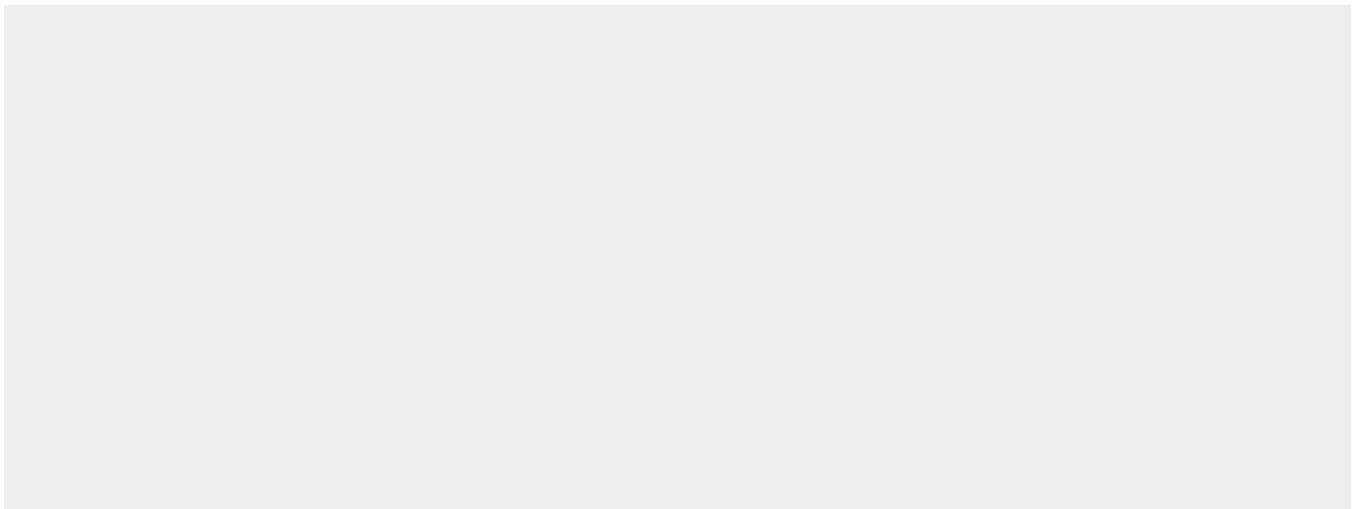
Expressed at high levels in the lymph nodes, thymus and appendix. Intermediate levels seen in colon and trachea, while low levels found in spleen, small intestine, lung, kidney and stomach

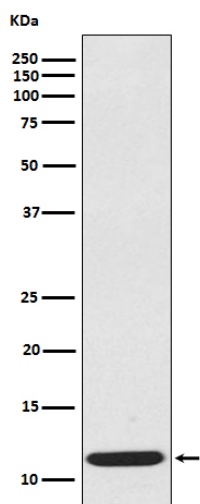
Anti-CCL19/Mip 3 Beta Rabbit Monoclonal Antibody - Protocols

Provided below are standard protocols that you may find useful for product applications.

- [Western Blot](#)
- [Blocking Peptides](#)
- [Dot Blot](#)
- [Immunohistochemistry](#)
- [Immunofluorescence](#)
- [Immunoprecipitation](#)
- [Flow Cytometry](#)
- [Cell Culture](#)

Anti-CCL19/Mip 3 Beta Rabbit Monoclonal Antibody - Images





Western blot analysis of extracts from CCL19 recombinant protein, using CCL19 antibody.