

**Anti-MMP14/Mt1 Mmp Rabbit Monoclonal Antibody**  
**Catalog # ABO13608****Specification**

---

**Anti-MMP14/Mt1 Mmp Rabbit Monoclonal Antibody - Product Information**

Application	WB, IHC, IF, ICC, IP, FC
Primary Accession	<a href="#">P50281</a>
Host	Rabbit
Isotype	Rabbit IgG
Reactivity	Rat, Human, Mouse
Clonality	Monoclonal
Format	Liquid

**Description**

Anti-MMP14/Mt1 Mmp Rabbit Monoclonal Antibody . Tested in WB, IHC, ICC/IF, IP, Flow Cytometry applications. This antibody reacts with Human, Mouse, Rat.

**Anti-MMP14/Mt1 Mmp Rabbit Monoclonal Antibody - Additional Information**

**Gene ID** 4323

**Other Names**

Matrix metalloproteinase-14, MMP-14, 3.4.24.80, MMP-X1, Membrane-type matrix metalloproteinase 1, MT-MMP 1, MTMMP1, Membrane-type-1 matrix metalloproteinase, MT1-MMP, MT1MMP, MMP14

**Calculated MW**

65894 MW KDa

**Application Details**

WB 1:1000-1:2000<br>IHC 1:50-1:200<br>ICC/IF 1:50-1:200<br>IP 1:50<br>FC 1:50

**Subcellular Localization**

Membrane ; Single-pass type I membrane protein. Melanosome. Cytoplasm. Identified by mass spectrometry in melanosome fractions from stage I to stage IV. Forms a complex with BST2 and localizes to the cytoplasm.

**Tissue Specificity**

Expressed in stromal cells of colon, breast, and head and neck. Expressed in lung tumors..

**Contents**

Rabbit IgG in phosphate buffered saline, pH 7.4, 150mM NaCl, 0.02% sodium azide and 50% glycerol, 0.4-0.5mg/ml BSA.

**Immunogen**

A synthesized peptide derived from human MMP14

**Purification**

Affinity-chromatography

**Storage**

**Store at -20°C for one year. For short term storage and frequent use, store at 4°C for up to one month. Avoid repeated freeze-thaw cycles.**

**Anti-MMP14/Mt1 Mmp Rabbit Monoclonal Antibody - Protein Information****Name** MMP14**Function**

Endopeptidase that degrades various components of the extracellular matrix such as collagen (PubMed:<a href="http://www.uniprot.org/citations/8015608" target="\_blank">8015608</a>). Essential for pericellular collagenolysis and modeling of skeletal and extraskeletal connective tissues during development (By similarity). Activates progelatinase A/MMP2, thereby acting as a positive regulator of cell growth and migration (PubMed:<a href="http://www.uniprot.org/citations/22065321" target="\_blank">22065321</a>, PubMed:<a href="http://www.uniprot.org/citations/8015608" target="\_blank">8015608</a>). Involved in the formation of the fibrovascular tissues in association with pro-MMP2 (PubMed:<a href="http://www.uniprot.org/citations/12714657" target="\_blank">12714657</a>, PubMed:<a href="http://www.uniprot.org/citations/22065321" target="\_blank">22065321</a>). May be involved in actin cytoskeleton reorganization by cleaving PTK7 (PubMed:<a href="http://www.uniprot.org/citations/20837484" target="\_blank">20837484</a>). Acts as a regulator of Notch signaling by mediating cleavage and inhibition of DLL1 (PubMed:<a href="http://www.uniprot.org/citations/21572390" target="\_blank">21572390</a>). Cleaves ADGRB1 to release vasculostatin-40 which inhibits angiogenesis (PubMed:<a href="http://www.uniprot.org/citations/22330140" target="\_blank">22330140</a>). Acts as a negative regulator of the GDF15-GFRAL aversive response by mediating cleavage and inactivation of GFRAL (PubMed:<a href="http://www.uniprot.org/citations/35177851" target="\_blank">35177851</a>).

**Cellular Location**

Cell membrane; Single-pass type I membrane protein. Melanosome. Cytoplasm Note=Identified by mass spectrometry in melanosome fractions from stage I to stage IV (PubMed:17081065). Forms a complex with BST2 and localizes to the cytoplasm (PubMed:17081065)

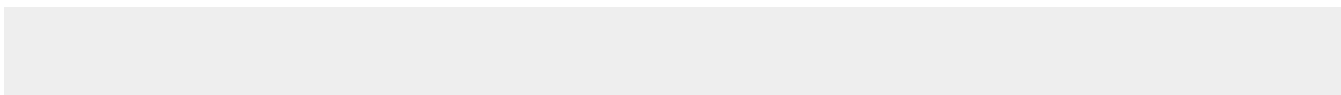
**Tissue Location**

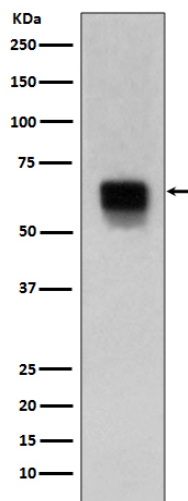
Expressed in stromal cells of colon, breast, and head and neck. Expressed in lung tumors.

**Anti-MMP14/Mt1 Mmp Rabbit Monoclonal Antibody - Protocols**

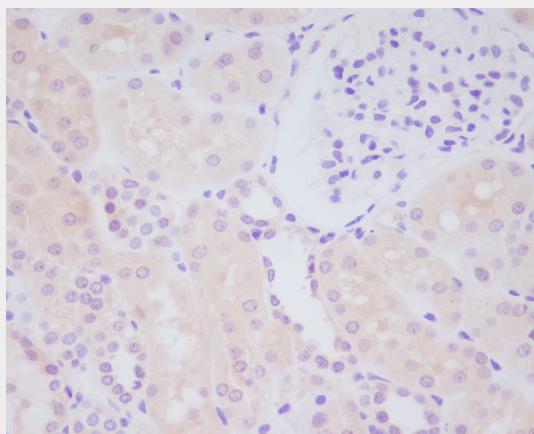
Provided below are standard protocols that you may find useful for product applications.

- [Western Blot](#)
- [Blocking Peptides](#)
- [Dot Blot](#)
- [Immunohistochemistry](#)
- [Immunofluorescence](#)
- [Immunoprecipitation](#)
- [Flow Cytometry](#)
- [Cell Culture](#)

**Anti-MMP14/Mt1 Mmp Rabbit Monoclonal Antibody - Images**



Western blot analysis of MMP14 expression in human spleen lysate.



Immunohistochemical analysis of paraffin-embedded human kidney, using MMP14 Antibody.