

**Anti-UCHL3 Rabbit Monoclonal Antibody**  
**Catalog # ABO13609****Specification**

---

**Anti-UCHL3 Rabbit Monoclonal Antibody - Product Information**

Application	WB
Primary Accession	<a href="#">P15374</a>
Host	Rabbit
Isotype	Rabbit IgG
Reactivity	Rat, Human, Mouse
Clonality	Monoclonal
Format	Liquid

**Description**

Anti-UCHL3 Rabbit Monoclonal Antibody . Tested in WB application. This antibody reacts with Human, Mouse, Rat.

**Anti-UCHL3 Rabbit Monoclonal Antibody - Additional Information**

**Gene ID** 7347

**Other Names**

Ubiquitin carboxyl-terminal hydrolase isozyme L3, UCH-L3, 3.4.19.12, Ubiquitin thioesterase L3, UCHL3

**Calculated MW**

26183 MW KDa

**Application Details**

WB 1:1000-1:2000

**Subcellular Localization**

Cytoplasm.

**Tissue Specificity**

Highly expressed in heart, skeletal muscle, and testis..

**Contents**

Rabbit IgG in phosphate buffered saline, pH 7.4, 150mM NaCl, 0.02% sodium azide and 50% glycerol, 0.4-0.5mg/ml BSA.

**Immunogen**

A synthesized peptide derived from human UCHL3

**Purification**

Affinity-chromatography

Storage

**Store at -20°C for one year. For short term storage and frequent use, store at 4°C for up to one month. Avoid repeated**

freeze-thaw cycles.

## **Anti-UCHL3 Rabbit Monoclonal Antibody - Protein Information**

**Name** UCHL3

### **Function**

Deubiquitinating enzyme (DUB) that controls levels of cellular ubiquitin through processing of ubiquitin precursors and ubiquitinated proteins. Thiol protease that recognizes and hydrolyzes a peptide bond at the C-terminal glycine of either ubiquitin or NEDD8. Has a 10-fold preference for Arg and Lys at position P3", and exhibits a preference towards 'Lys-48'-linked ubiquitin chains. Deubiquitinates ENAC in apical compartments, thereby regulating apical membrane recycling. Indirectly increases the phosphorylation of IGFIR, AKT and FOXO1 and promotes insulin-signaling and insulin-induced adipogenesis. Required for stress-response retinal, skeletal muscle and germ cell maintenance. May be involved in working memory. Can hydrolyze UBB(+1), a mutated form of ubiquitin which is not effectively degraded by the proteasome and is associated with neurodegenerative disorders.

### **Cellular Location**

Cytoplasm.

### **Tissue Location**

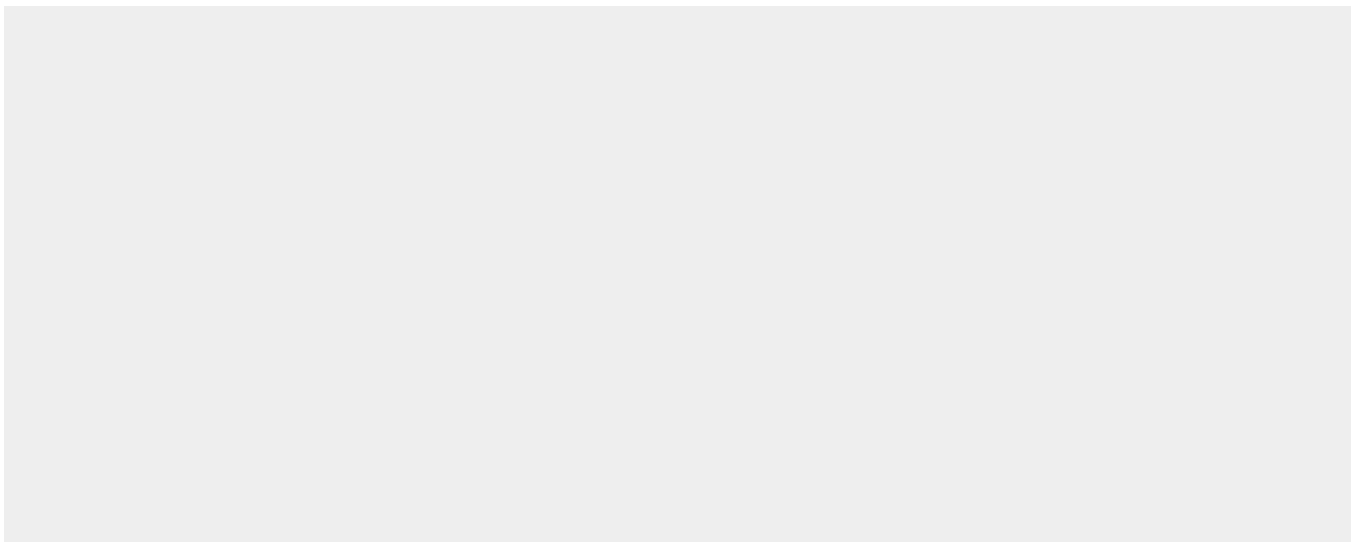
Highly expressed in heart, skeletal muscle, and testis.

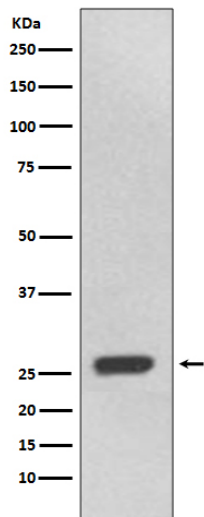
## **Anti-UCHL3 Rabbit Monoclonal Antibody - Protocols**

Provided below are standard protocols that you may find useful for product applications.

- [Western Blot](#)
- [Blocking Peptides](#)
- [Dot Blot](#)
- [Immunohistochemistry](#)
- [Immunofluorescence](#)
- [Immunoprecipitation](#)
- [Flow Cytometry](#)
- [Cell Culture](#)

## **Anti-UCHL3 Rabbit Monoclonal Antibody - Images**





Western blot analysis of UCHL3 expression in 293T cell lysate.