

Anti-PELP1 Rabbit Monoclonal Antibody
Catalog # ABO13612**Specification**

Anti-PELP1 Rabbit Monoclonal Antibody - Product Information

Application	WB, IHC, IF, ICC, FC
Primary Accession	Q8IZL8
Host	Rabbit
Isotype	Rabbit IgG
Reactivity	Human
Clonality	Monoclonal
Format	Liquid

Description

Anti-PELP1 Rabbit Monoclonal Antibody . Tested in WB, IHC, ICC/IF, Flow Cytometry applications.
This antibody reacts with Human.

Anti-PELP1 Rabbit Monoclonal Antibody - Additional Information

Gene ID 27043

Other Names

Proline-, glutamic acid- and leucine-rich protein 1, Modulator of non-genomic activity of estrogen receptor, Transcription factor HMX3, PELP1, HMX3, MNAR

Calculated MW

119700 MW KDa

Application Details

WB 1:500-1:1000
IHC 1:50-1:200
ICC/IF 1:50-1:200
FC 1:50

Subcellular Localization

Nucleus, nucleoplasm. Nucleus. Cytoplasm. Mainly found in the nucleoplasm, with low levels detected in the cytoplasm (By similarity). Also found associated with the plasma membrane. Mainly in cytoplasm in a subset of breast tumors. Localization is widely deregulated in endometrial cancers with predominantly cytoplasm localization in high-grade endometrial tumors..

Tissue Specificity

Widely expressed..

Contents

Rabbit IgG in phosphate buffered saline, pH 7.4, 150mM NaCl, 0.02% sodium azide and 50% glycerol, 0.4-0.5mg/ml BSA.

Immunogen

A synthesized peptide derived from human PELP1

Purification

Affinity-chromatography

Storage

Store at -20°C for one year. For short term storage and frequent use, store at 4°C for up to one month. Avoid repeated freeze-thaw cycles.

Anti-PELP1 Rabbit Monoclonal Antibody - Protein Information

Name PELP1

Synonyms HMX3, MNAR

Function

Coactivator of estrogen receptor-mediated transcription and a corepressor of other nuclear hormone receptors and sequence-specific transcription factors (PubMed:14963108). Plays a role in estrogen receptor (ER) genomic activity when present in the nuclear compartment by activating the ER target genes in a hormonal stimulation dependent manner. Can facilitate ER non-genomic signaling via SRC and PI3K interaction in the cytosol. Plays a role in E2-mediated cell cycle progression by interacting with RB1. May have important functional implications in ER/growth factor cross-talk. Interacts with several growth factor signaling components including EGFR and HRS. Functions as the key stabilizing component of the Five Friends of Methylated CHTOP (5FMC) complex; the 5FMC complex is recruited to ZNF148 by methylated CHTOP, leading to desumoylation of ZNF148 and subsequent transactivation of ZNF148 target genes. Component of the PELP1 complex involved in the nucleolar steps of 28S rRNA maturation and the subsequent nucleoplasmic transit of the pre-60S ribosomal subunit. Regulates pre-60S association of the critical remodeling factor MDN1 (PubMed:21326211). May promote tumorigenesis via its interaction with and modulation of several oncogenes including SRC, PI3K, STAT3 and EGFR. Plays a role in cancer cell metastasis via its ability to modulate E2-mediated cytoskeleton changes and cell migration via its interaction with SRC and PI3K.

Cellular Location

Nucleus, nucleolus. Nucleus, nucleoplasm. Nucleus. Cytoplasm Note=Mainly found in the nucleoplasm, with low levels detected in the cytoplasm (By similarity). Also found associated with the plasma membrane. Mainly in cytoplasm in a subset of breast tumors Localization is widely deregulated in endometrial cancers with predominantly cytoplasm localization in high-grade endometrial tumors (PubMed:16140940). {ECO:0000250|UniProtKB:Q9DBD5, ECO:0000269|PubMed:16140940}

Tissue Location

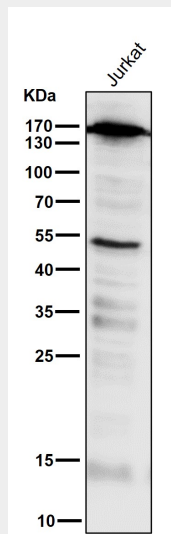
Widely expressed..

Anti-PELP1 Rabbit Monoclonal Antibody - Protocols

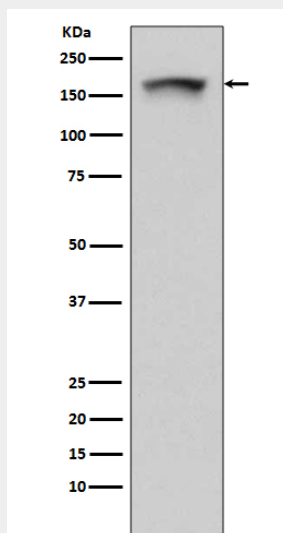
Provided below are standard protocols that you may find useful for product applications.

- [Western Blot](#)
- [Blocking Peptides](#)
- [Dot Blot](#)
- [Immunohistochemistry](#)
- [Immunofluorescence](#)
- [Immunoprecipitation](#)
- [Flow Cytometry](#)
- [Cell Culture](#)

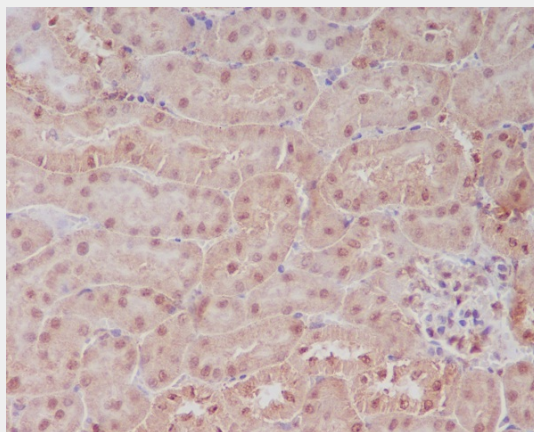
Anti-PELP1 Rabbit Monoclonal Antibody - Images



All lanes use the Antibody at 1:2K dilution for 1 hour at room temperature.



Western blot analysis of PELP1 expression in 293T cell lysate.



Immunohistochemical analysis of paraffin-embedded mouse kidney, using PELP1 Antibody.