

Anti-c-Jun Rabbit Monoclonal Antibody
Catalog # ABO13615**Specification**

Anti-c-Jun Rabbit Monoclonal Antibody - Product Information

Application	WB, IHC, IF, ICC, IP
Primary Accession	P05412
Host	Rabbit
Isotype	Rabbit IgG
Reactivity	Rat, Human, Mouse
Clonality	Monoclonal
Format	Liquid

Description

Anti-c-Jun Rabbit Monoclonal Antibody . Tested in WB, IHC, ICC/IF, IP applications. This antibody reacts with Human, Mouse, Rat.

Anti-c-Jun Rabbit Monoclonal Antibody - Additional Information

Gene ID 3725

Other Names

Transcription factor Jun, Activator protein 1, AP1, Proto-oncogene c-Jun, Transcription factor AP-1 subunit Jun, V-jun avian sarcoma virus 17 oncogene homolog, p39, JUN

Calculated MW

35676 MW KDa

Application Details

WB 1:500-1:2000
IHC 1:50-1:200
ICC/IF 1:50-1:200
IP 1:50

Subcellular Localization

Nucleus.

Contents

Rabbit IgG in phosphate buffered saline, pH 7.4, 150mM NaCl, 0.02% sodium azide and 50% glycerol, 0.4-0.5mg/ml BSA.

Immunogen

A synthesized peptide derived from human c-Jun

Purification

Affinity-chromatography

Storage

Store at -20°C for one year. For short term storage and frequent use, store at 4°C for up to one month. Avoid repeated freeze-thaw cycles.

Anti-c-Jun Rabbit Monoclonal Antibody - Protein Information

Name JUN**Function**

Transcription factor that recognizes and binds to the AP-1 consensus motif 5'-TGA[GC]TCA-3' (PubMed:10995748, PubMed:22083952). Heterodimerizes with proteins of the FOS family to form an AP-1 transcription complex, thereby enhancing its DNA binding activity to the AP-1 consensus sequence 5'-TGA[GC]TCA-3' and enhancing its transcriptional activity (By similarity). Together with FOSB, plays a role in activation-induced cell death of T cells by binding to the AP-1 promoter site of FASLG/CD95L, and inducing its transcription in response to activation of the TCR/CD3 signaling pathway (PubMed:12618758). Promotes activity of NR5A1 when phosphorylated by HIPK3 leading to increased steroidogenic gene expression upon cAMP signaling pathway stimulation (PubMed:17210646). Involved in activated KRAS-mediated transcriptional activation of USP28 in colorectal cancer (CRC) cells (PubMed:24623306). Binds to the USP28 promoter in colorectal cancer (CRC) cells (PubMed:24623306).

Cellular Location

Nucleus.

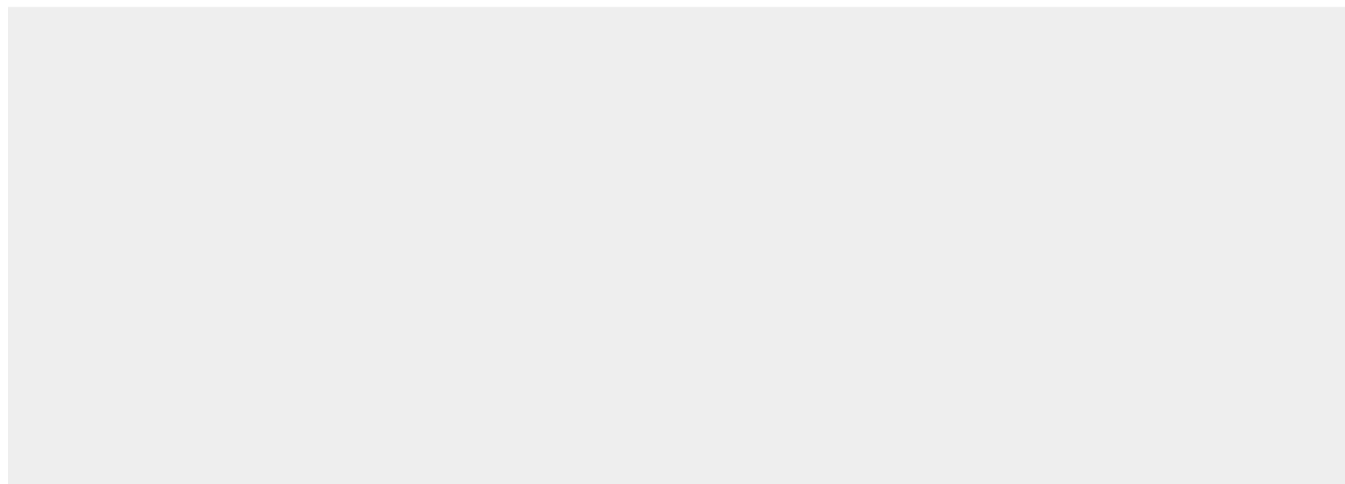
Tissue Location

Expressed in the developing and adult prostate and prostate cancer cells.

Anti-c-Jun Rabbit Monoclonal Antibody - Protocols

Provided below are standard protocols that you may find useful for product applications.

- [Western Blot](#)
- [Blocking Peptides](#)
- [Dot Blot](#)
- [Immunohistochemistry](#)
- [Immunofluorescence](#)
- [Immunoprecipitation](#)
- [Flow Cytometry](#)
- [Cell Culture](#)

Anti-c-Jun Rabbit Monoclonal Antibody - Images

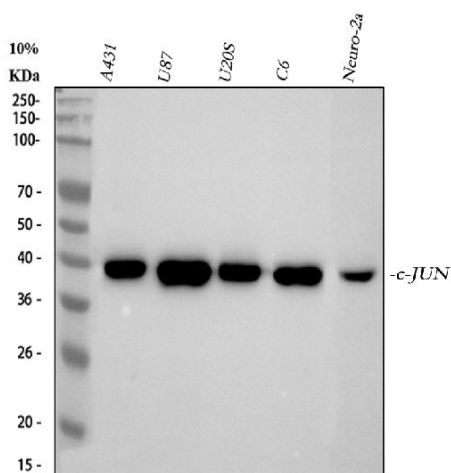


Figure 1. Western blot analysis of c-Jun using anti-c-Jun antibody (M02038).

Electrophoresis was performed on a 5-20% SDS-PAGE gel at 70V (Stacking gel) / 90V (Resolving gel) for 2-3 hours. The sample well of each lane was loaded with 30 ug of sample under reducing conditions.

Lane 1: human A431 whole cell lysates,

Lane 2: human U87 whole cell lysates,

Lane 3: human U2OS whole cell lysates,

Lane 4: rat C6 whole cell lysates,

Lane 5: mouse Neuro-2a whole cell lysates.

After electrophoresis, proteins were transferred to a nitrocellulose membrane at 150 mA for 50-90 minutes. Blocked the membrane with 5% non-fat milk/TBS for 1.5 hour at RT. The membrane was incubated with rabbit anti-c-Jun antigen affinity purified monoclonal antibody (Catalog # M02038) at 1:500 overnight at 4°C, then washed with TBS-0.1%Tween 3 times with 5 minutes each and probed with a goat anti-rabbit IgG-HRP secondary antibody at a dilution of 1:5000 for 1.5 hour at RT. The signal is developed using an Enhanced Chemiluminescent detection (ECL) kit (Catalog # EK1002) with Tanon 5200 system. A specific band was detected for c-Jun at approximately 43 kDa. The expected band size for c-Jun is at 36 kDa.

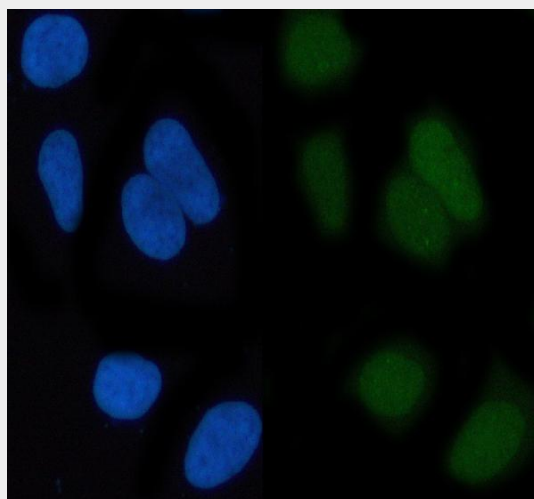
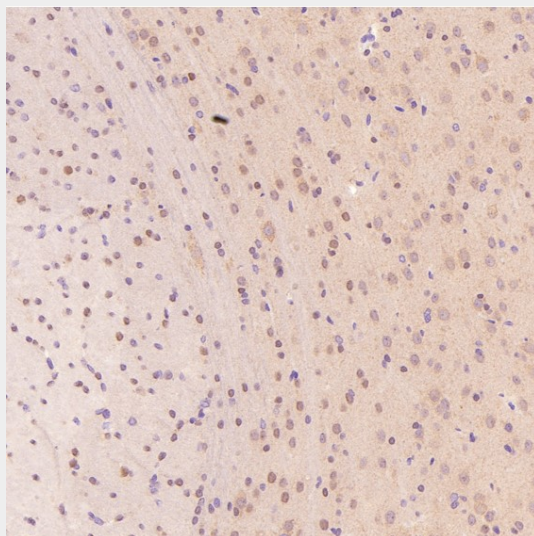


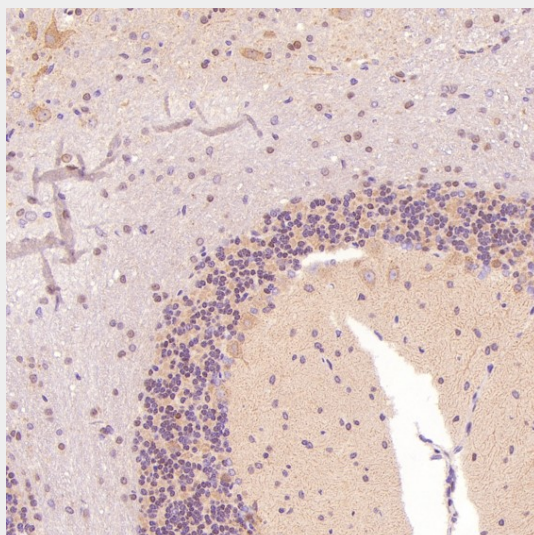
Figure 2. IF analysis of c-Jun using anti-c-Jun antibody (M02038).

c-Jun was detected in immunocytochemical section of Hela cell. Enzyme antigen retrieval was performed using IHC enzyme antigen retrieval reagent (AR0022) for 15 mins. The cells were blocked with 10% goat serum. And then incubated at 1:50 with rabbit anti-c-Jun Antibody (M02038) overnight at 4°C. DyLight®488 Conjugated Goat Anti-Rabbit IgG (BA1127) was used as secondary antibody at 1:500 dilution and incubated for 30 minutes at 37°C. The section was

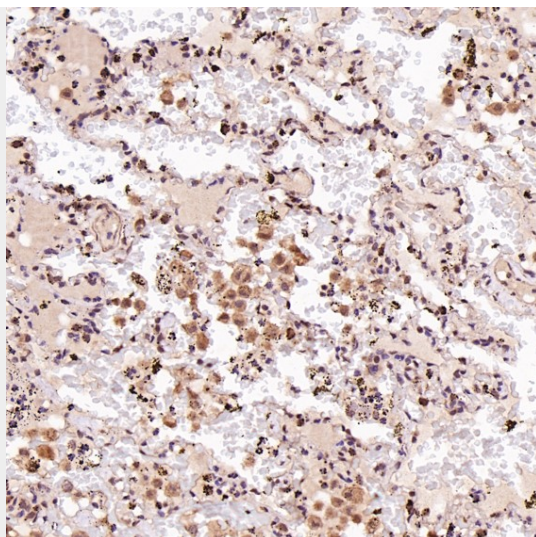
counterstained with DAPI. Visualize using a fluorescence microscope and filter sets appropriate for the label used.



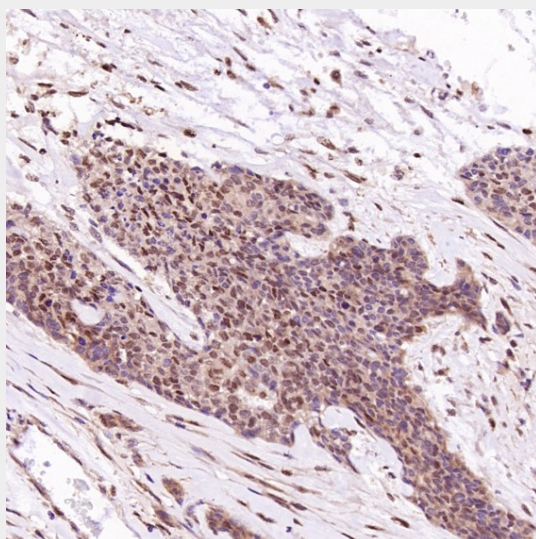
Immunohistochemical analysis of paraffin-embedded Rat cerebral cortex, using the Antibody at 1:500 dilution.



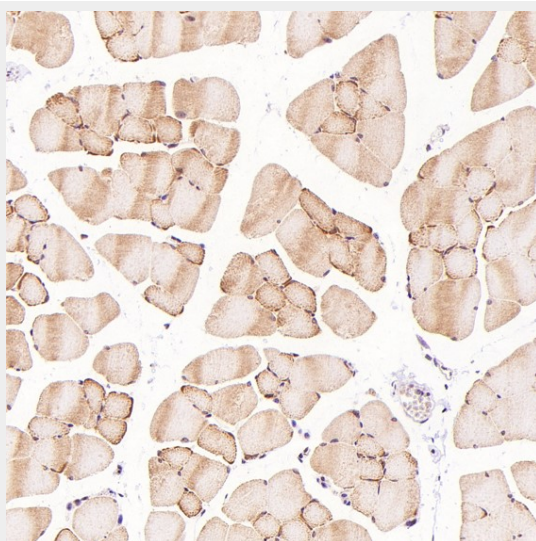
Immunohistochemical analysis of paraffin-embedded Rat cerebellum, using the Antibody at 1:500 dilution.



Immunohistochemical analysis of paraffin-embedded Human squamous carcinoma, using the Antibody at 1:200 dilution.



Immunohistochemical analysis of paraffin-embedded Human breast cancer, using the Antibody at 1:200 dilution.



Immunohistochemical analysis of paraffin-embedded Mouse skeletal muscle - gastrocnemius , using the Antibody at 1:500 dilution.