

Anti-TGFBI/Beta Ig H3 Rabbit Monoclonal Antibody
Catalog # ABO13620**Specification**

Anti-TGFBI/Beta Ig H3 Rabbit Monoclonal Antibody - Product Information

Application	WB, IHC
Primary Accession	Q15582
Host	Rabbit
Isotype	Rabbit IgG
Reactivity	Rat, Human, Mouse
Clonality	Monoclonal
Format	Liquid

Description

Anti-TGFBI/Beta Ig H3 Rabbit Monoclonal Antibody . Tested in WB, IHC applications. This antibody reacts with Human, Mouse, Rat.

Anti-TGFBI/Beta Ig H3 Rabbit Monoclonal Antibody - Additional Information

Gene ID 7045

Other Names

Transforming growth factor-beta-induced protein ig-h3, Beta ig-h3, Kerato-epithelin, RGD-containing collagen-associated protein, RGD-CAP, TGFBI, BIGH3

Calculated MW

74681 MW KDa

Application Details

WB 1:1000-1:2000
IHC 1:50-1:200

Subcellular Localization

Secreted, extracellular space, extracellular matrix. May be associated both with microfibrils and with the cell surface.

Tissue Specificity

Highly expressed in the corneal epithelium..

Contents

Rabbit IgG in phosphate buffered saline, pH 7.4, 150mM NaCl, 0.02% sodium azide and 50% glycerol, 0.4-0.5mg/ml BSA.

Immunogen

A synthesized peptide derived from human TGFBI

Purification

Affinity-chromatography

Storage

Store at -20°C for one year. For short term storage and frequent use, store at 4°C for

up to one month. Avoid repeated
freeze-thaw cycles.

Anti-TGFBI/Beta Ig H3 Rabbit Monoclonal Antibody - Protein Information

Name TGFBI

Synonyms BIGH3

Function

Plays a role in cell adhesion (PubMed:8024701). May play a role in cell-collagen interactions (By similarity).

Cellular Location

Secreted. Secreted, extracellular space, extracellular matrix Note=May be associated both with microfibrils and with the cell surface (PubMed:8077289).

Tissue Location

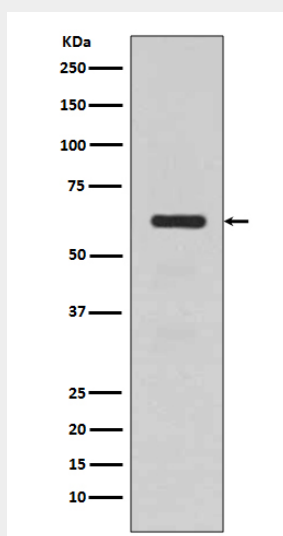
Highly expressed in the corneal epithelium (PubMed:27609313, PubMed:8077289). Expressed in heart, placenta, lung, liver, skeletal muscle, kidney and pancreas (PubMed:8077289)

Anti-TGFBI/Beta Ig H3 Rabbit Monoclonal Antibody - Protocols

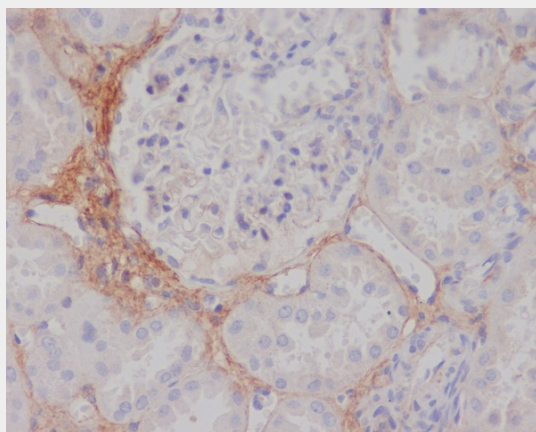
Provided below are standard protocols that you may find useful for product applications.

- [Western Blot](#)
- [Blocking Peptides](#)
- [Dot Blot](#)
- [Immunohistochemistry](#)
- [Immunofluorescence](#)
- [Immunoprecipitation](#)
- [Flow Cytometry](#)
- [Cell Culture](#)

Anti-TGFBI/Beta Ig H3 Rabbit Monoclonal Antibody - Images



Western blot analysis of TGFBI expression in human fetal kidney lysate.



Immunohistochemical analysis of paraffin-embedded human kidney, using TGFBI Antibody.