

**Anti-STAT6 Rabbit Monoclonal Antibody**  
**Catalog # ABO13625****Specification**

---

**Anti-STAT6 Rabbit Monoclonal Antibody - Product Information**

Application	WB, IHC, IF, ICC, IP
Primary Accession	<a href="#">P42226</a>
Host	Rabbit
Isotype	Rabbit IgG
Reactivity	Human, Mouse
Clonality	Monoclonal
Format	Liquid

**Description**

Anti-STAT6 Rabbit Monoclonal Antibody . Tested in WB, IHC, ICC/IF, IP applications. This antibody reacts with Human, Mouse.

**Anti-STAT6 Rabbit Monoclonal Antibody - Additional Information**

**Gene ID** 6778

**Other Names**

Signal transducer and activator of transcription 6, IL-4 Stat, STAT6

**Calculated MW**

94135 MW KDa

**Application Details**

WB 1:500-1:2000<br>IHC 1:50-1:200<br>ICC/IF 1:50-1:200<br>IP 1:50

**Subcellular Localization**

Cytoplasm. Nucleus. Translocated into the nucleus in response to phosphorylation.

**Contents**

Rabbit IgG in phosphate buffered saline, pH 7.4, 150mM NaCl, 0.02% sodium azide and 50% glycerol, 0.4-0.5mg/ml BSA.

**Immunogen**

A synthesized peptide derived from human STAT6

**Purification**

Affinity-chromatography

Storage

**Store at -20°C for one year. For short term storage and frequent use, store at 4°C for up to one month. Avoid repeated freeze-thaw cycles.**

**Anti-STAT6 Rabbit Monoclonal Antibody - Protein Information**

**Name** STAT6**Function**

Carries out a dual function: signal transduction and activation of transcription. Involved in IL4/interleukin-4- and IL3/interleukin-3-mediated signaling.

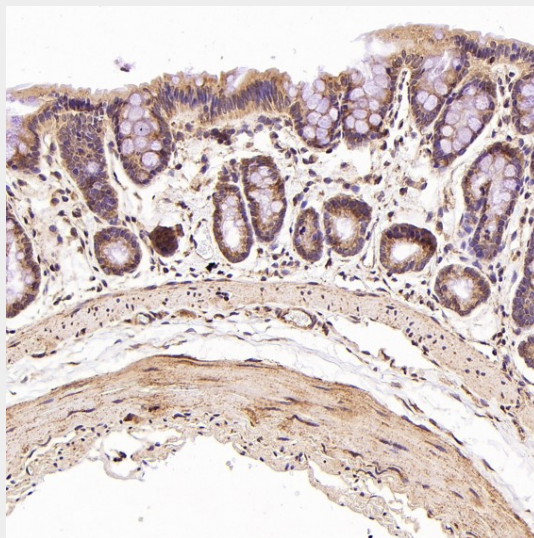
**Cellular Location**

Cytoplasm. Nucleus. Note=Translocated into the nucleus in response to phosphorylation

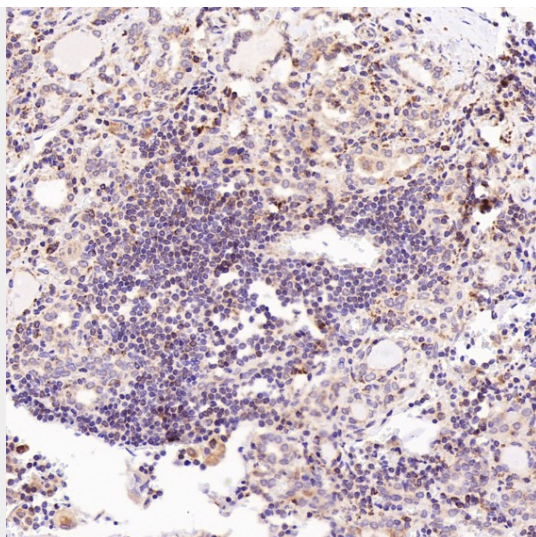
**Anti-STAT6 Rabbit Monoclonal Antibody - Protocols**

Provided below are standard protocols that you may find useful for product applications.

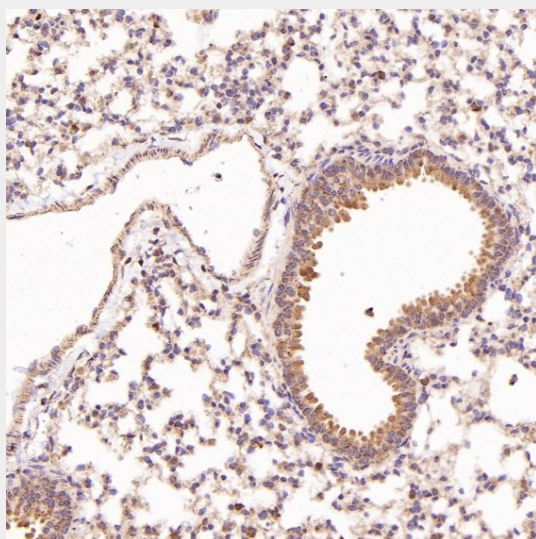
- [Western Blot](#)
- [Blocking Peptides](#)
- [Dot Blot](#)
- [Immunohistochemistry](#)
- [Immunofluorescence](#)
- [Immunoprecipitation](#)
- [Flow Cytometry](#)
- [Cell Culture](#)

**Anti-STAT6 Rabbit Monoclonal Antibody - Images**

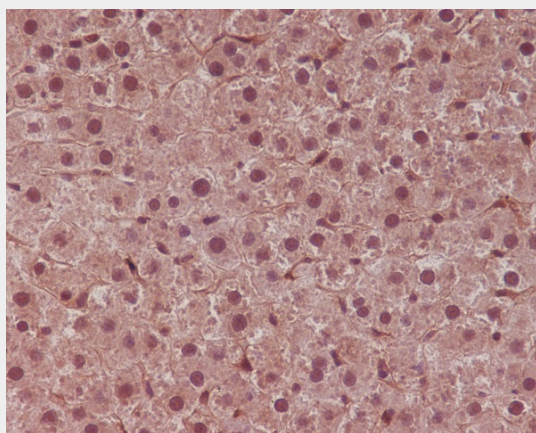
Immunohistochemical analysis of paraffin-embedded Rat stomach, using the Antibody at 1:100 dilution.



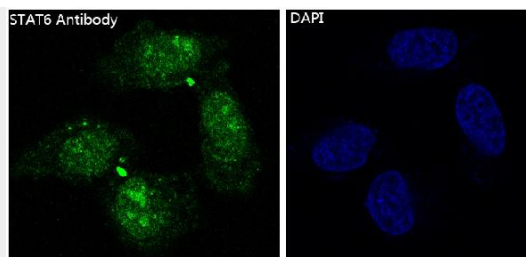
Immunohistochemical analysis of paraffin-embedded Human thyroid cancer, using the Antibody at 1:300 dilution.



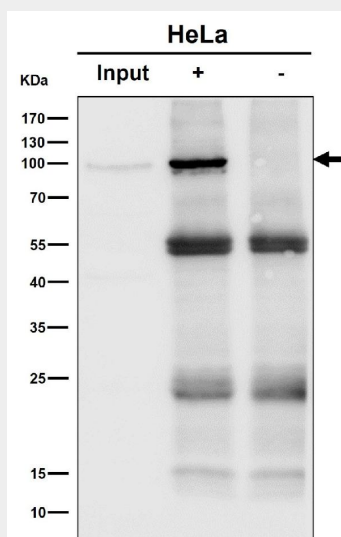
Immunohistochemical analysis of paraffin-embedded Mouse lung, using the Antibody at 1:100 dilution.



Immunohistochemical analysis of paraffin-embedded rat liver, using STAT6 Antibody.



Immunofluorescent analysis of HeLa cells, using STAT6 Antibody .



Immunoprecipitate (IP) analysis using the Antibody at 1:50 dilution. (wb at 1:1K dilution)

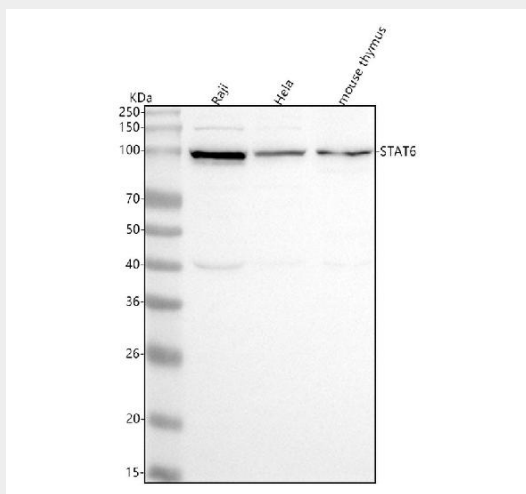


Figure 1. Western blot analysis of STAT6 using anti-STAT6 antibody (M00523).

Electrophoresis was performed on a 5-20% SDS-PAGE gel at 70V (Stacking gel) / 90V (Resolving gel) for 2-3 hours. The sample well of each lane was loaded with 30 ug of sample under reducing conditions.

Lane 1: human Raji whole cell lysates,  
Lane 2: human HeLa whole cell lysates,  
Lane 3: mouse thymus tissue lysates.

After electrophoresis, proteins were transferred to a nitrocellulose membrane at 150 mA for 50-90 minutes. Blocked the membrane with 5% non-fat milk/TBS for 1.5 hour at RT. The membrane was incubated with rabbit anti-STAT6 antigen affinity purified monoclonal antibody (Catalog # M00523) at 1:500 overnight at 4°C, then washed with TBS-0.1%Tween 3 times with 5 minutes

each and probed with a goat anti-rabbit IgG-HRP secondary antibody at a dilution of 1:5000 for 1.5 hour at RT. The signal is developed using an Enhanced Chemiluminescent detection (ECL) kit (Catalog # EK1002) with Tanon 5200 system. A specific band was detected for STAT6 at approximately 100 kDa. The expected band size for STAT6 is at 94 kDa.