

**Anti-MMP12 Rabbit Monoclonal Antibody**  
**Catalog # ABO13628****Specification**

---

**Anti-MMP12 Rabbit Monoclonal Antibody - Product Information**

Application	WB
Primary Accession	<a href="#">P39900</a>
Host	Rabbit
Isotype	Rabbit IgG
Reactivity	Human
Clonality	Monoclonal
Format	Liquid

**Description**

Anti-MMP12 Rabbit Monoclonal Antibody . Tested in WB application. This antibody reacts with Human.

**Anti-MMP12 Rabbit Monoclonal Antibody - Additional Information**

**Gene ID** 4321

**Other Names**

Macrophage metalloelastase, MME, 3.4.24.65, Macrophage elastase, ME, hME, Matrix metalloproteinase-12, MMP-12, MMP12, HME

**Calculated MW**

54002 MW KDa

**Application Details**

WB 1:1000-1:2000

**Subcellular Localization**

Secreted, extracellular space, extracellular matrix.

**Tissue Specificity**

Found in alveolar macrophages but not in peripheral blood monocytes.

**Contents**

Rabbit IgG in phosphate buffered saline, pH 7.4, 150mM NaCl, 0.02% sodium azide and 50% glycerol, 0.4-0.5mg/ml BSA.

**Immunogen**

A synthesized peptide derived from human MMP12

**Purification**

Affinity-chromatography

**Storage**

**Store at -20°C for one year. For short term storage and frequent use, store at 4°C for up to one month. Avoid repeated**

freeze-thaw cycles.

## Anti-MMP12 Rabbit Monoclonal Antibody - Protein Information

**Name** MMP12

**Synonyms** HME

### Function

May be involved in tissue injury and remodeling. Has significant elastolytic activity. Can accept large and small amino acids at the P1' site, but has a preference for leucine. Aromatic or hydrophobic residues are preferred at the P1 site, with small hydrophobic residues (preferably alanine) occupying P3.

### Cellular Location

Secreted, extracellular space, extracellular matrix

### Tissue Location

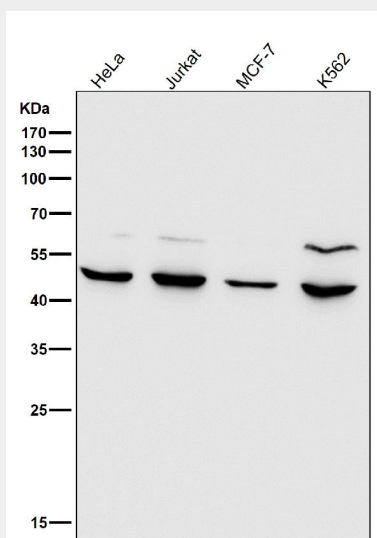
Found in alveolar macrophages but not in peripheral blood monocytes

## Anti-MMP12 Rabbit Monoclonal Antibody - Protocols

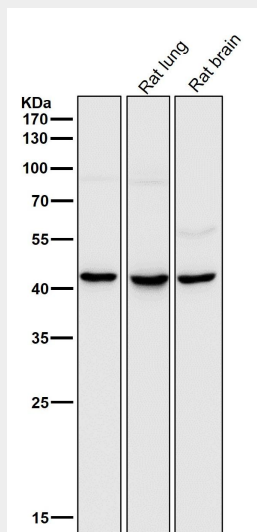
Provided below are standard protocols that you may find useful for product applications.

- [Western Blot](#)
- [Blocking Peptides](#)
- [Dot Blot](#)
- [Immunohistochemistry](#)
- [Immunofluorescence](#)
- [Immunoprecipitation](#)
- [Flow Cytometry](#)
- [Cell Culture](#)

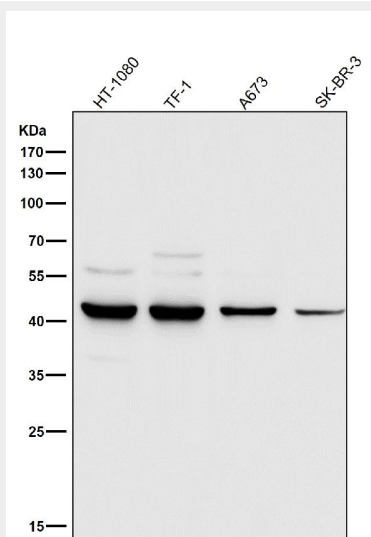
## Anti-MMP12 Rabbit Monoclonal Antibody - Images



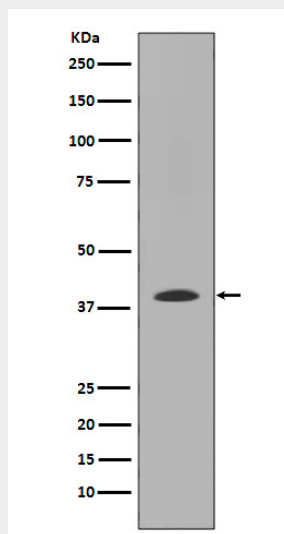
All lanes use the Antibody at 1:1K dilution for 1 hour at room temperature.



All lanes use the Antibody at 1:1K dilution for 1 hour at room temperature.



All lanes use the Antibody at 1:1K dilution for 1 hour at room temperature.



Western blot analysis of MMP12 expression in WI-38 cell lysate.