

**Anti-DUSP6/Mkp 3 Rabbit Monoclonal Antibody**  
**Catalog # ABO13636****Specification**

---

**Anti-DUSP6/Mkp 3 Rabbit Monoclonal Antibody - Product Information**

|                   |                          |
|-------------------|--------------------------|
| Application       | WB, IHC, IF, ICC, IP, FC |
| Primary Accession | <a href="#">Q16828</a>   |
| Host              | Rabbit                   |
| Isotype           | Rabbit IgG               |
| Reactivity        | Rat, Human, Mouse        |
| Clonality         | Monoclonal               |
| Format            | Liquid                   |

**Description**

Anti-DUSP6/Mkp 3 Rabbit Monoclonal Antibody . Tested in WB, IHC, ICC/IF, IP, Flow Cytometry applications. This antibody reacts with Human, Mouse, Rat.

**Anti-DUSP6/Mkp 3 Rabbit Monoclonal Antibody - Additional Information**

**Gene ID** 1848

**Other Names**

Dual specificity protein phosphatase 6, 3.1.3.16, 3.1.3.48, Dual specificity protein phosphatase PYST1, Mitogen-activated protein kinase phosphatase 3, MAP kinase phosphatase 3, MKP-3, DUSP6, MKP3, PYST1

**Calculated MW**

42320 MW KDa

**Application Details**

WB 1:500-1:2000<br>IHC 1:50-1:200<br>ICC/IF 1:50-1:200<br>IP 1:50<br>FC 1:50

**Subcellular Localization**

Cytoplasm.

**Contents**

Rabbit IgG in phosphate buffered saline, pH 7.4, 150mM NaCl, 0.02% sodium azide and 50% glycerol, 0.4-0.5mg/ml BSA.

**Immunogen**

A synthesized peptide derived from human DUSP6

**Purification**

Affinity-chromatography

**Storage**

**Store at -20°C for one year. For short term storage and frequent use, store at 4°C for up to one month. Avoid repeated freeze-thaw cycles.**

## Anti-DUSP6/Mkp 3 Rabbit Monoclonal Antibody - Protein Information

**Name** DUSP6

**Synonyms** MKP3, PYST1

### Function

Dual specificity protein phosphatase, which mediates dephosphorylation and inactivation of MAP kinases (PubMed:<a href="http://www.uniprot.org/citations/8670865" target="\_blank">8670865</a>). Has a specificity for the ERK family (PubMed:<a href="http://www.uniprot.org/citations/8670865" target="\_blank">8670865</a>). Plays an important role in alleviating chronic postoperative pain (By similarity). Necessary for the normal dephosphorylation of the long-lasting phosphorylated forms of spinal MAPK1/3 and MAP kinase p38 induced by peripheral surgery, which drives the resolution of acute postoperative allodynia (By similarity). Also important for dephosphorylation of MAPK1/3 in local wound tissue, which further contributes to resolution of acute pain (By similarity). Promotes cell differentiation by regulating MAPK1/MAPK3 activity and regulating the expression of AP1 transcription factors (PubMed:<a href="http://www.uniprot.org/citations/29043977" target="\_blank">29043977</a>).

### Cellular Location

Cytoplasm.

### Tissue Location

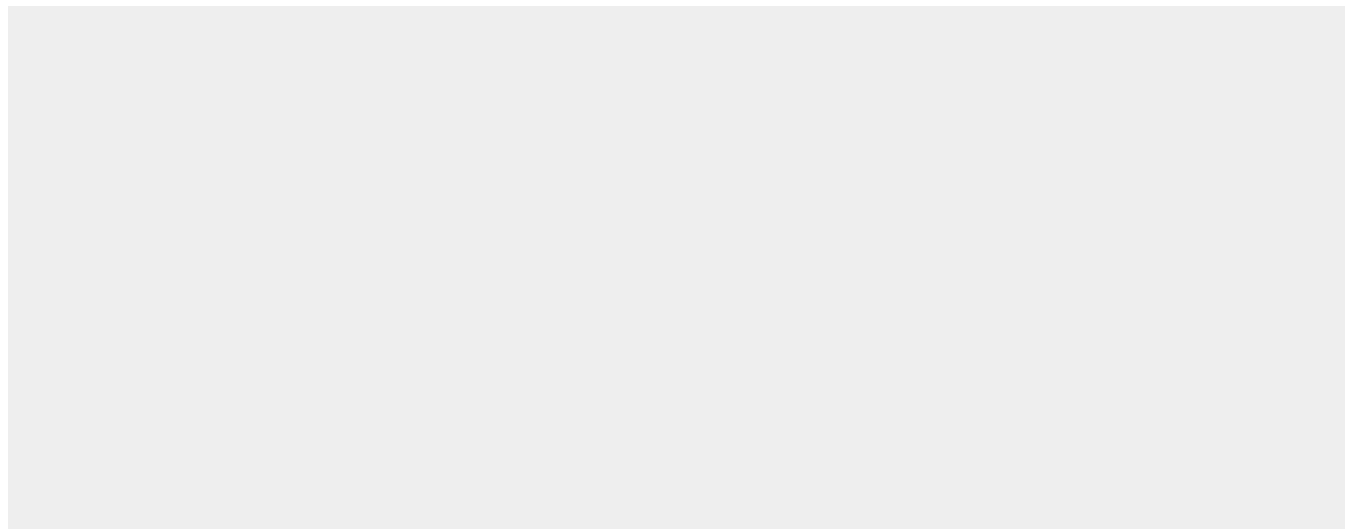
Expressed in keratinocytes (at protein level).

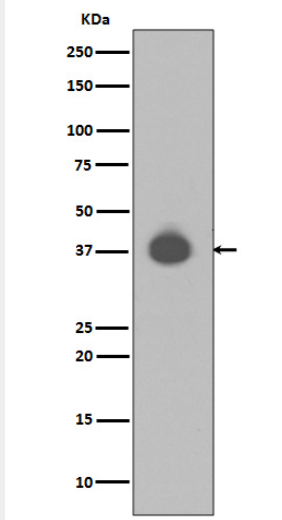
## Anti-DUSP6/Mkp 3 Rabbit Monoclonal Antibody - Protocols

Provided below are standard protocols that you may find useful for product applications.

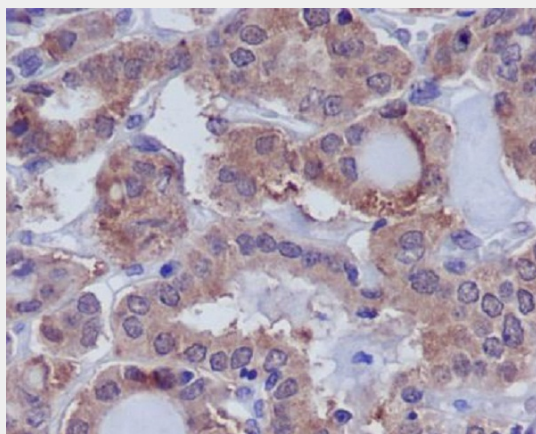
- [Western Blot](#)
- [Blocking Peptides](#)
- [Dot Blot](#)
- [Immunohistochemistry](#)
- [Immunofluorescence](#)
- [Immunoprecipitation](#)
- [Flow Cytometry](#)
- [Cell Culture](#)

## Anti-DUSP6/Mkp 3 Rabbit Monoclonal Antibody - Images

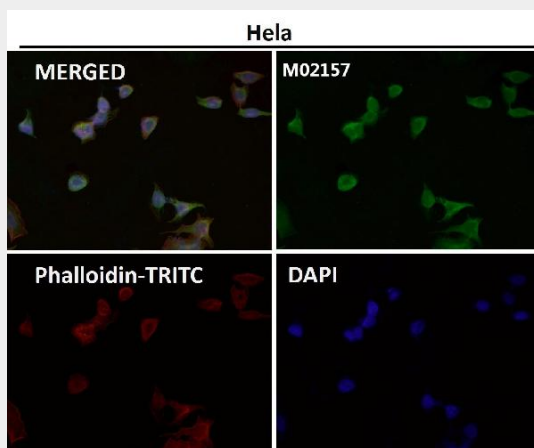




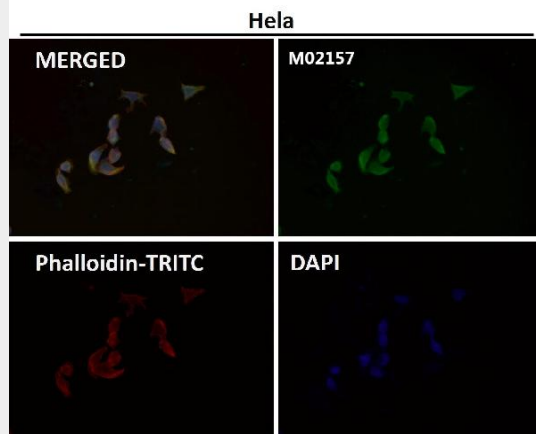
Western blot analysis of DUSP6 expression in NIH/3T3 cell lysate.



Immunohistochemical analysis of paraffin-embedded human thyroid, using DUSP6 Antibody.



Immunofluorescent analysis using the Antibody at 1:50 dilution.



Immunofluorescent analysis using the Antibody at 1:150 dilution.