

**Anti-Fos B Rabbit Monoclonal Antibody**  
**Catalog # ABO13641****Specification****Anti-Fos B Rabbit Monoclonal Antibody - Product Information**

Application	WB, IHC, IF, ICC, IP
Primary Accession	<a href="#">P53539</a>
Host	Rabbit
Isotype	Rabbit IgG
Reactivity	Rat, Human, Mouse
Clonality	Monoclonal
Format	Liquid

**Description**

Anti-Fos B Rabbit Monoclonal Antibody . Tested in WB, IHC, ICC/IF, IP applications. This antibody reacts with Human, Mouse, Rat.

**Anti-Fos B Rabbit Monoclonal Antibody - Additional Information**

**Gene ID** 2354

**Other Names**

Protein FosB, FosB proto-oncogene, AP-1 transcription factor subunit {ECO:0000312|HGNC:HGNC:3797}, G0/G1 switch regulatory protein 3, Transcription factor AP-1 subunit FosB, FOSB, G0S3

**Calculated MW**

35928 MW KDa

**Application Details**

WB 1:500-1:2000<br>IHC 1:50-1:200<br>ICC/IF 1:50-1:200<br>IP 1:20

**Subcellular Localization**

Nucleus.

**Contents**

Rabbit IgG in phosphate buffered saline, pH 7.4, 150mM NaCl, 0.02% sodium azide and 50% glycerol, 0.4-0.5mg/ml BSA.

**Immunogen**

A synthesized peptide derived from human Fos B

**Purification**

Affinity-chromatography

**Storage**

**Store at -20°C for one year. For short term storage and frequent use, store at 4°C for up to one month. Avoid repeated freeze-thaw cycles.**

## Anti-Fos B Rabbit Monoclonal Antibody - Protein Information

**Name** FOSB

**Synonyms** G0S3

### Function

Heterodimerizes with proteins of the JUN family to form an AP-1 transcription factor complex, thereby enhancing their DNA binding activity to gene promoters containing an AP-1 consensus sequence 5'- TGA[GC]TCA-3' and enhancing their transcriptional activity (PubMed:<a href="http://www.uniprot.org/citations/12618758" target="\_blank">12618758</a>, PubMed:<a href="http://www.uniprot.org/citations/28981703" target="\_blank">28981703</a>). As part of the AP-1 complex, facilitates enhancer selection together with cell-type-specific transcription factors by collaboratively binding to nucleosomal enhancers and recruiting the SWI/SNF (BAF) chromatin remodeling complex to establish accessible chromatin (By similarity). Together with JUN, plays a role in activation-induced cell death of T cells by binding to the AP-1 promoter site of FASLG/CD95L, and inducing its transcription in response to activation of the TCR/CD3 signaling pathway (PubMed:<a href="http://www.uniprot.org/citations/12618758" target="\_blank">12618758</a>). Exhibits transactivation activity in vitro (By similarity). Involved in the display of nurturing behavior towards newborns (By similarity). May play a role in neurogenesis in the hippocampus and in learning and memory-related tasks by regulating the expression of various genes involved in neurogenesis, depression and epilepsy (By similarity). Implicated in behavioral responses related to morphine reward and spatial memory (By similarity).

### Cellular Location

Nucleus {ECO:0000250|UniProtKB:P13346}.

### Tissue Location

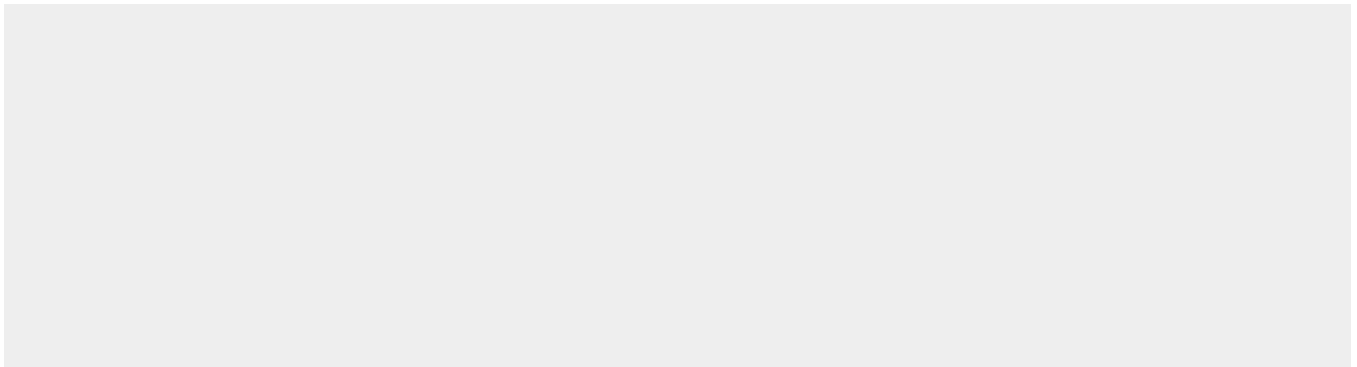
[Isoform 11]: Expressed in the nucleus accumbens of the striatum (at protein level).

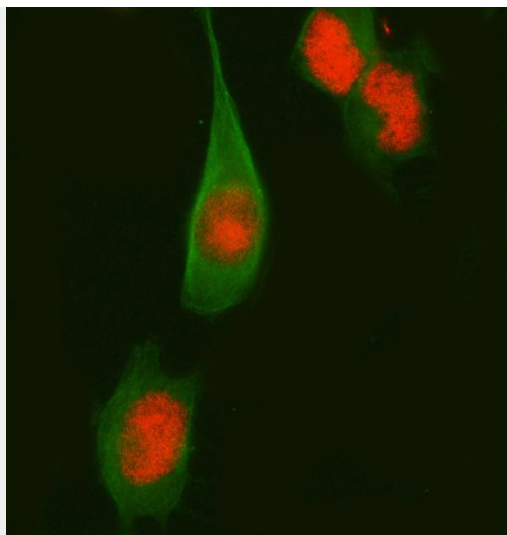
## Anti-Fos B Rabbit Monoclonal Antibody - Protocols

Provided below are standard protocols that you may find useful for product applications.

- [Western Blot](#)
- [Blocking Peptides](#)
- [Dot Blot](#)
- [Immunohistochemistry](#)
- [Immunofluorescence](#)
- [Immunoprecipitation](#)
- [Flow Cytometry](#)
- [Cell Culture](#)

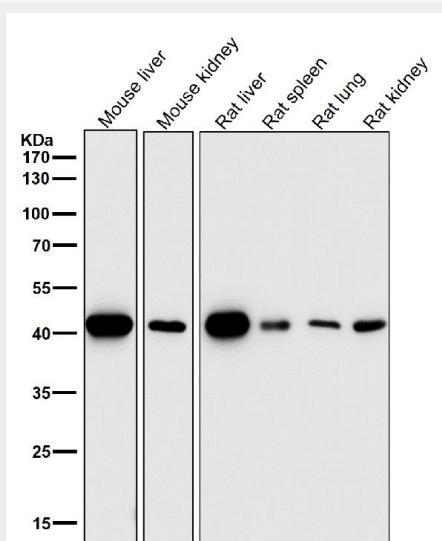
## Anti-Fos B Rabbit Monoclonal Antibody - Images





IF analysis of Fos B using anti-Fos B antibody (M01569) and anti-Beta Tubulin antibody (M01857-3).

Fos B was detected in immunocytochemical section of HELA cell. Enzyme antigen retrieval was performed using IHC enzyme antigen retrieval reagent (AR0022) for 15 mins. The cells were blocked with 10% goat serum. And then incubated at 1:50 with rabbit anti-Fos B Antibody (M01569) and mouse anti-Beta Tubulin antibody (M01857-3) overnight at 4°C. Cy3 Conjugated Goat Anti-Rabbit IgG (BA1032) and DyLight®488 Conjugated Goat Anti-Mouse IgG (BA1126) were used as secondary antibody at 1:500 dilution and incubated for 30 minutes at 37°C. Visualize using a fluorescence microscope and filter sets appropriate for the label used.



All lanes use the Antibody at 1:1W dilution for 1 hour at room temperature.