

**Anti-Hsp70 HSPA1A Rabbit Monoclonal Antibody**  
**Catalog # ABO13643****Specification**

---

**Anti-Hsp70 HSPA1A Rabbit Monoclonal Antibody - Product Information**

Application	WB, IHC, IF, ICC, FC
Primary Accession	<a href="#">P0DMV8</a>
Host	Rabbit
Isotype	Rabbit IgG
Reactivity	Rat, Human, Mouse
Clonality	Monoclonal
Format	Liquid

**Description**

Anti-Hsp70 HSPA1A Rabbit Monoclonal Antibody . Tested in WB, IHC, ICC/IF, Flow Cytometry applications. This antibody reacts with Human, Mouse, Rat.

**Anti-Hsp70 HSPA1A Rabbit Monoclonal Antibody - Additional Information**

**Gene ID** 3303;3304

**Other Names**

Heat shock 70 kDa protein 1A {ECO:0000312|HGNC:HGNC:5232}, Heat shock 70 kDa protein 1, HSP70-1, HSP70.1, Heat shock protein family A member 1A, HSPA1A, HSP72 {ECO:0000303|PubMed:24318877}, HSPA1, HSX70

**Calculated MW**

70052 MW KDa

**Application Details**

WB 1:500-1:2000<br>IHC 1:100-1:500<br>ICC/IF 1:50-1:100<br>FC 1:100

**Subcellular Localization**

Cytoplasm. Localized in cytoplasmic mRNP granules containing untranslated mRNAs.

**Contents**

Rabbit IgG in phosphate buffered saline, pH 7.4, 150mM NaCl, 0.02% sodium azide and 50% glycerol, 0.4-0.5mg/ml BSA.

**Immunogen**

A synthesized peptide derived from human Hsp70

**Purification**

Affinity-chromatography

**Storage**

**Store at -20°C for one year. For short term storage and frequent use, store at 4°C for up to one month. Avoid repeated freeze-thaw cycles.**

## Anti-Hsp70 HSPA1A Rabbit Monoclonal Antibody - Protein Information

**Name** HSPA1A

**Synonyms** HSP72 {ECO:0000303|PubMed:24318877}, HSP

### Function

Molecular chaperone implicated in a wide variety of cellular processes, including protection of the proteome from stress, folding and transport of newly synthesized polypeptides, activation of proteolysis of misfolded proteins and the formation and dissociation of protein complexes. Plays a pivotal role in the protein quality control system, ensuring the correct folding of proteins, the re-folding of misfolded proteins and controlling the targeting of proteins for subsequent degradation. This is achieved through cycles of ATP binding, ATP hydrolysis and ADP release, mediated by co-chaperones. The co-chaperones have been shown to not only regulate different steps of the ATPase cycle, but they also have an individual specificity such that one co-chaperone may promote folding of a substrate while another may promote degradation. The affinity for polypeptides is regulated by its nucleotide bound state. In the ATP-bound form, it has a low affinity for substrate proteins. However, upon hydrolysis of the ATP to ADP, it undergoes a conformational change that increases its affinity for substrate proteins. It goes through repeated cycles of ATP hydrolysis and nucleotide exchange, which permits cycles of substrate binding and release. The co-chaperones are of three types: J-domain co-chaperones such as HSP40s (stimulate ATPase hydrolysis by HSP70), the nucleotide exchange factors (NEF) such as BAG1/2/3 (facilitate conversion of HSP70 from the ADP-bound to the ATP-bound state thereby promoting substrate release), and the TPR domain chaperones such as HOPX and STUB1 (PubMed:<a href="http://www.uniprot.org/citations/24012426" target="\_blank">24012426</a>, PubMed:<a href="http://www.uniprot.org/citations/24318877" target="\_blank">24318877</a>, PubMed:<a href="http://www.uniprot.org/citations/26865365" target="\_blank">26865365</a>). Maintains protein homeostasis during cellular stress through two opposing mechanisms: protein refolding and degradation. Its acetylation/deacetylation state determines whether it functions in protein refolding or protein degradation by controlling the competitive binding of co-chaperones HOPX and STUB1. During the early stress response, the acetylated form binds to HOPX which assists in chaperone-mediated protein refolding, thereafter, it is deacetylated and binds to ubiquitin ligase STUB1 that promotes ubiquitin-mediated protein degradation (PubMed:<a href="http://www.uniprot.org/citations/27708256" target="\_blank">27708256</a>). Regulates centrosome integrity during mitosis, and is required for the maintenance of a functional mitotic centrosome that supports the assembly of a bipolar mitotic spindle (PubMed:<a href="http://www.uniprot.org/citations/27137183" target="\_blank">27137183</a>). Enhances STUB1-mediated SMAD3 ubiquitination and degradation and facilitates STUB1-mediated inhibition of TGF-beta signaling (PubMed:<a href="http://www.uniprot.org/citations/24613385" target="\_blank">24613385</a>). Essential for STUB1-mediated ubiquitination and degradation of FOXP3 in regulatory T-cells (Treg) during inflammation (PubMed:<a href="http://www.uniprot.org/citations/23973223" target="\_blank">23973223</a>). Required as a co-chaperone for optimal STUB1/CHIP ubiquitination of NFATC3 (By similarity). Negatively regulates heat shock-induced HSF1 transcriptional activity during the attenuation and recovery phase period of the heat shock response (PubMed:<a href="http://www.uniprot.org/citations/9499401" target="\_blank">9499401</a>). Involved in the clearance of misfolded PRDM1/Blimp-1 proteins. Sequesters them in the cytoplasm and promotes their association with SYN1/HRD1, leading to proteasomal degradation (PubMed:<a href="http://www.uniprot.org/citations/28842558" target="\_blank">28842558</a>).

### Cellular Location

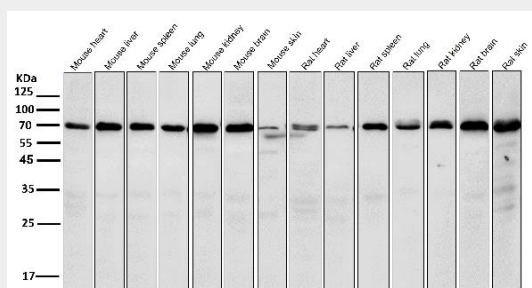
Cytoplasm. Nucleus. Cytoplasm, cytoskeleton, microtubule organizing center, centrosome. Secreted {ECO:0000250|UniProtKB:Q61696}. Note=Localized in cytoplasmic mRNP granules containing untranslated mRNAs

## Anti-Hsp70 HSPA1A Rabbit Monoclonal Antibody - Protocols

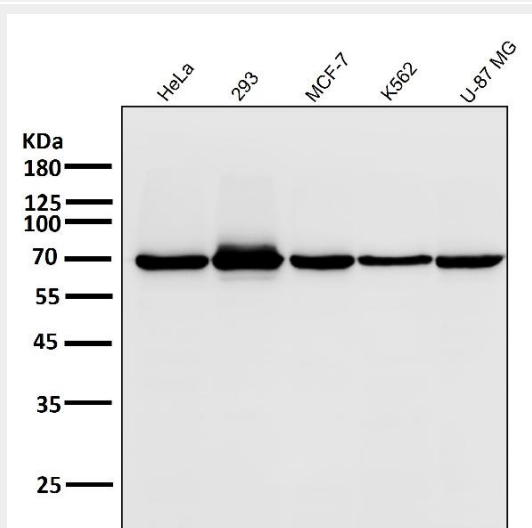
Provided below are standard protocols that you may find useful for product applications.

- [Western Blot](#)
- [Blocking Peptides](#)
- [Dot Blot](#)
- [Immunohistochemistry](#)
- [Immunofluorescence](#)
- [Immunoprecipitation](#)
- [Flow Cytometry](#)
- [Cell Culture](#)

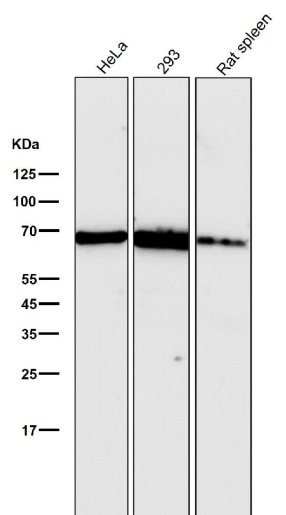
## Anti-Hsp70 HSPA1A Rabbit Monoclonal Antibody - Images



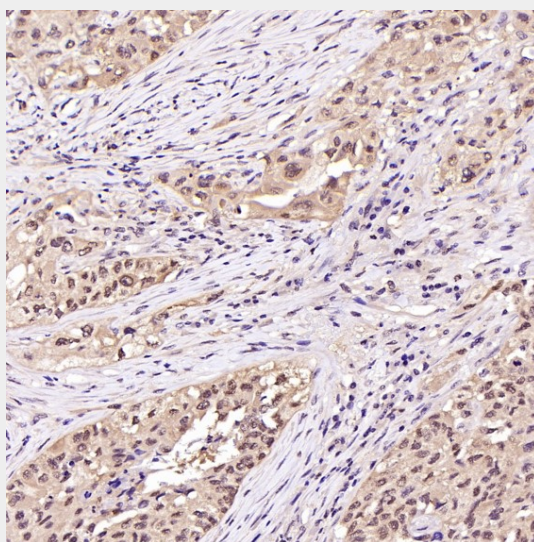
All lanes use the Antibody at 1:6K dilution for 1 hour at room temperature.



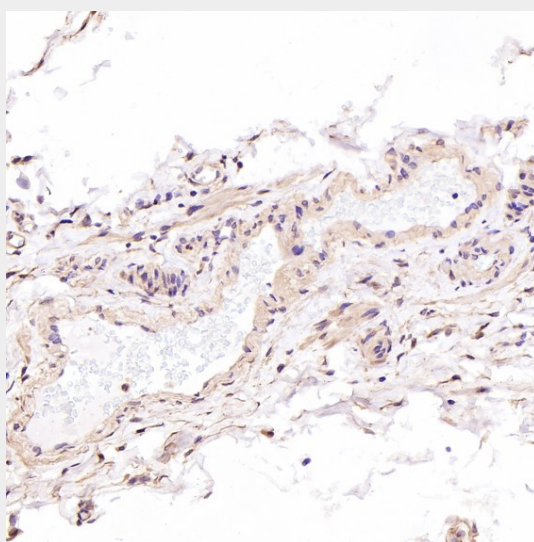
All lanes use the Antibody at 1:6K dilution for 1 hour at room temperature.



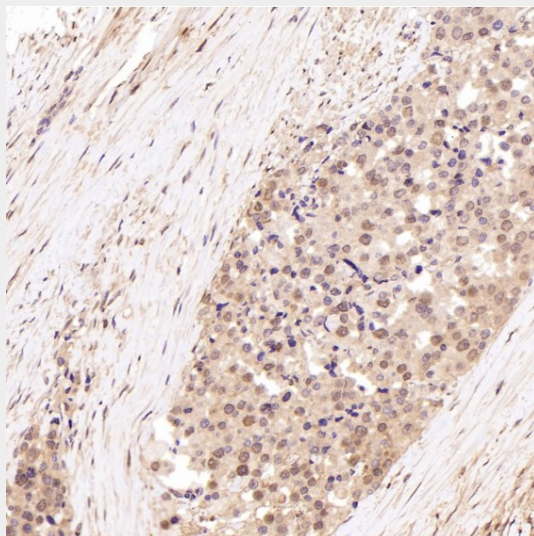
All lanes use the Antibody at 1:1W dilution for 1 hour at room temperature.



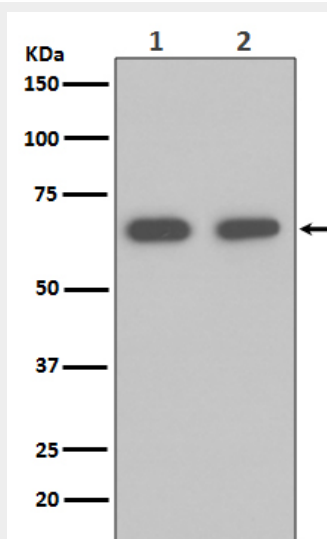
Immunohistochemical analysis of paraffin-embedded Human squamous carcinoma, using the Antibody at 1:200 dilution.



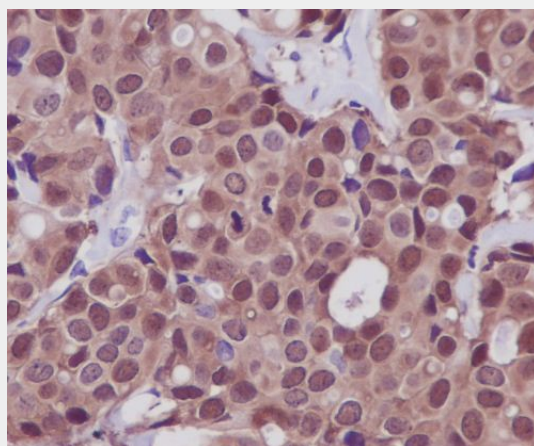
Immunohistochemical analysis of paraffin-embedded Human testis cancer, using the Antibody at 1:200 dilution.



Immunohistochemical analysis of paraffin-embedded Human prostate cancer, using the Antibody at 1:200 dilution.

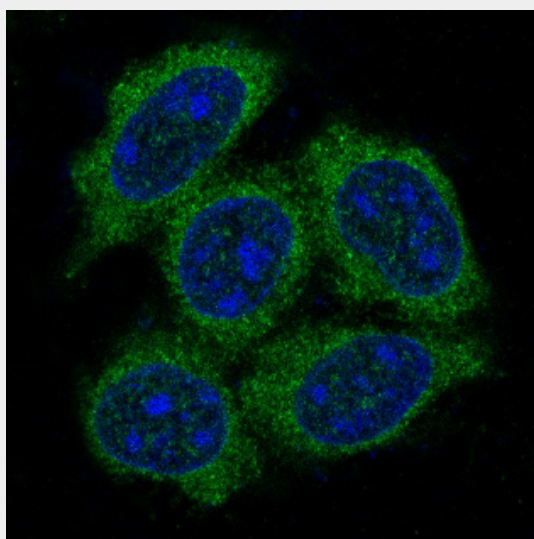


Western blot analysis of HSP70 expression in (1) K562 cell lysate; (2) 293T cell lysate.





Immunohistochemical analysis of paraffin-embedded human breast, using Hsp70 Antibody.



Immunofluorescent analysis of Hela cells, using Hsp70 Antibody.