

Anti-MUC16/Ca125 Rabbit Monoclonal Antibody
Catalog # ABO13674**Specification****Anti-MUC16/Ca125 Rabbit Monoclonal Antibody - Product Information**

Application	WB, IF, ICC, FC
Primary Accession	Q8WXI7
Host	Rabbit
Isotype	Rabbit IgG
Reactivity	Human
Clonality	Monoclonal
Format	Liquid

Description

Anti-MUC16/Ca125 Rabbit Monoclonal Antibody . Tested in WB, ICC/IF, Flow Cytometry applications. This antibody reacts with Human.

Anti-MUC16/Ca125 Rabbit Monoclonal Antibody - Additional Information

Gene ID 94025

Other Names

Mucin-16, MUC-16, Ovarian cancer-related tumor marker CA125, CA-125, Ovarian carcinoma antigen CA125, MUC16 (http://www.genenames.org/cgi-bin/gene_symbol_report?hgnc_id=15582)
HGNC:15582

Calculated MW

1519175 MW KDa

Application Details

WB 1:5000-1:20000
ICC/IF 1:50-1:200
FC 1:100

Subcellular Localization

Cell membrane; Single-pass type I membrane protein. Secreted, extracellular space. May be liberated into the extracellular space following the phosphorylation of the intracellular C-terminus which induces the proteolytic cleavage and liberation of the extracellular domain.

Tissue Specificity

Expressed in corneal and conjunctival epithelia (at protein level). Overexpressed in ovarian carcinomas and ovarian low malignant potential (LMP) tumors as compared to the expression in normal ovarian tissue and ovarian adenomas..

Contents

Rabbit IgG in phosphate buffered saline, pH 7.4, 150mM NaCl, 0.02% sodium azide and 50% glycerol, 0.4-0.5mg/ml BSA.

Immunogen

A synthesized peptide derived from human MUC16

Purification

Affinity-chromatography

Storage

Store at -20°C for one year. For short term storage and frequent use, store at 4°C for up to one month. Avoid repeated freeze-thaw cycles.

Anti-MUC16/Ca125 Rabbit Monoclonal Antibody - Protein Information**Name** MUC16 ([HGNC:15582](#))**Function**

Thought to provide a protective, lubricating barrier against particles and infectious agents at mucosal surfaces.

Cellular Location

Cell membrane; Single-pass type I membrane protein. Secreted, extracellular space. Note=May be liberated into the extracellular space following the phosphorylation of the intracellular C-terminus which induces the proteolytic cleavage and liberation of the extracellular domain

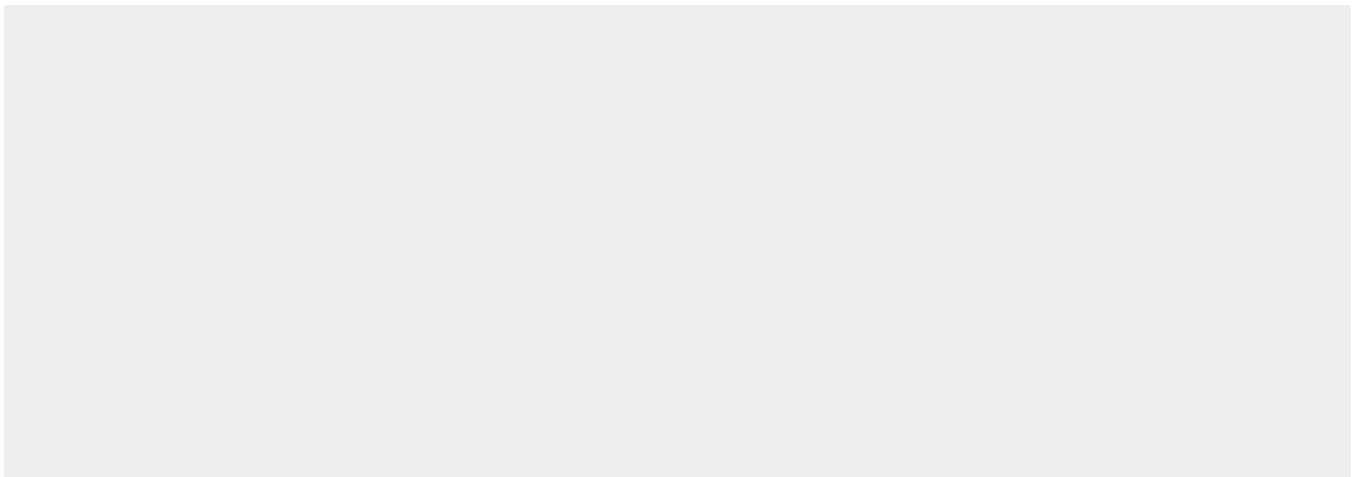
Tissue Location

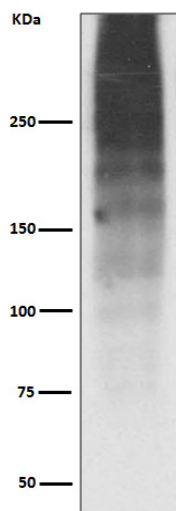
Expressed in corneal and conjunctival epithelia (at protein level). Overexpressed in ovarian carcinomas and ovarian low malignant potential (LMP) tumors as compared to the expression in normal ovarian tissue and ovarian adenomas

Anti-MUC16/Ca125 Rabbit Monoclonal Antibody - Protocols

Provided below are standard protocols that you may find useful for product applications.

- [Western Blot](#)
- [Blocking Peptides](#)
- [Dot Blot](#)
- [Immunohistochemistry](#)
- [Immunofluorescence](#)
- [Immunoprecipitation](#)
- [Flow Cytometry](#)
- [Cell Culture](#)

Anti-MUC16/Ca125 Rabbit Monoclonal Antibody - Images



Western blot analysis of MUC16 expression in Human ovary cancer lysate.