

Anti-OPRD1/Delta Opioid Receptor Rabbit Monoclonal Antibody
Catalog # ABO13681**Specification****Anti-OPRD1/Delta Opioid Receptor Rabbit Monoclonal Antibody - Product Information**

Application	WB, FC
Primary Accession	P41143
Host	Rabbit
Isotype	Rabbit IgG
Reactivity	Rat, Human, Mouse
Clonality	Monoclonal
Format	Liquid

Description

Anti-OPRD1/Delta Opioid Receptor Rabbit Monoclonal Antibody . Tested in WB, Flow Cytometry applications. This antibody reacts with Human, Mouse, Rat.

Anti-OPRD1/Delta Opioid Receptor Rabbit Monoclonal Antibody - Additional Information

Gene ID 4985

Other Names

Delta-type opioid receptor, D-OR-1, DOR-1, OPRD1, OPRD

Calculated MW

40369 MW KDa

Application Details

WB 1:1000-1:2000
FC 1:50

Subcellular Localization

Cell membrane ; Multi- pass membrane protein.

Tissue Specificity

Detected in oocytes (at protein level). Detected in brain cortex, hypothalamus, hippocampus and olfactory bulb. Detected in oocytes..

Contents

Rabbit IgG in phosphate buffered saline, pH 7.4, 150mM NaCl, 0.02% sodium azide and 50% glycerol, 0.4-0.5mg/ml BSA.

Immunogen

A synthesized peptide derived from human OPRD1

Purification

Affinity-chromatography

Storage

Store at -20°C for one year. For short term storage and frequent use, store at 4°C for up to one month. Avoid repeated

freeze-thaw cycles.

Anti-OPRD1/Delta Opioid Receptor Rabbit Monoclonal Antibody - Protein Information

Name OPRD1

Synonyms OPRD

Function

G-protein coupled receptor that functions as a receptor for endogenous enkephalins and for a subset of other opioids. Ligand binding causes a conformation change that triggers signaling via guanine nucleotide-binding proteins (G proteins) and modulates the activity of down-stream effectors, such as adenylate cyclase. Signaling leads to the inhibition of adenylate cyclase activity. Inhibits neurotransmitter release by reducing calcium ion currents and increasing potassium ion conductance. Plays a role in the perception of pain and in opiate-mediated analgesia. Plays a role in developing analgesic tolerance to morphine.

Cellular Location

Cell membrane; Multi-pass membrane protein

Tissue Location

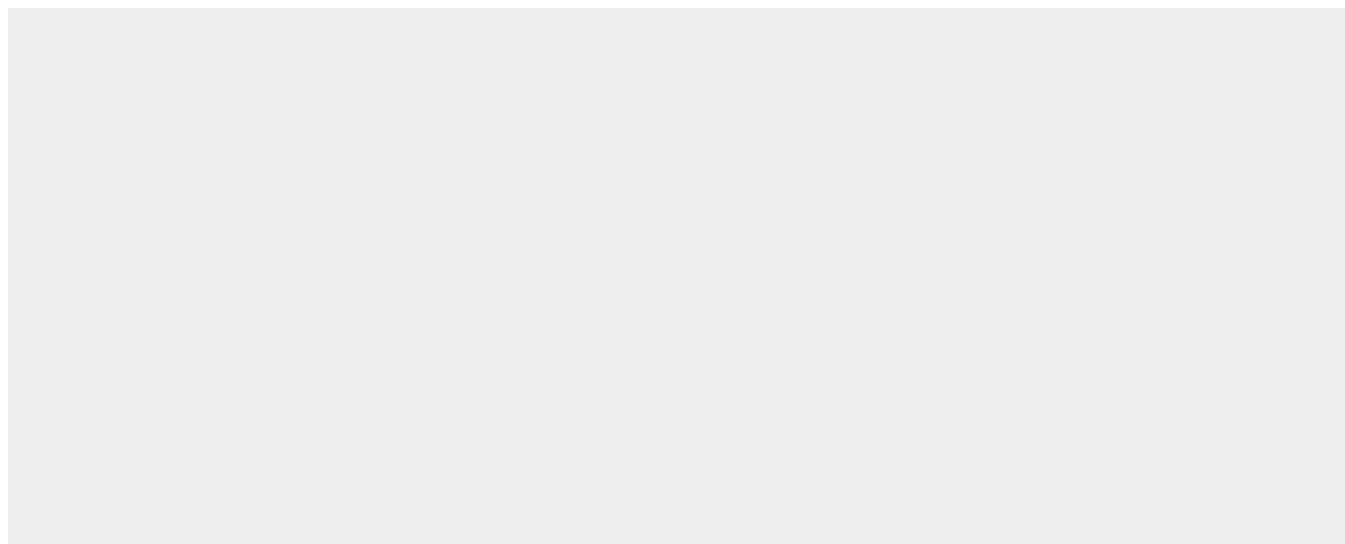
Detected in oocytes (at protein level). Detected in brain cortex, hypothalamus, hippocampus and olfactory bulb. Detected in oocytes.

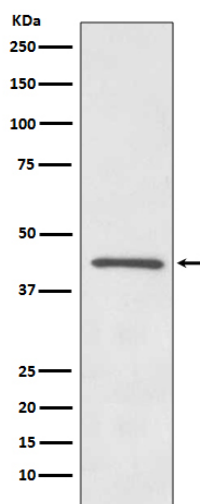
Anti-OPRD1/Delta Opioid Receptor Rabbit Monoclonal Antibody - Protocols

Provided below are standard protocols that you may find useful for product applications.

- [Western Blot](#)
- [Blocking Peptides](#)
- [Dot Blot](#)
- [Immunohistochemistry](#)
- [Immunofluorescence](#)
- [Immunoprecipitation](#)
- [Flow Cytometry](#)
- [Cell Culture](#)

Anti-OPRD1/Delta Opioid Receptor Rabbit Monoclonal Antibody - Images





Western blot analysis of OPRD1 expression in SH-SY5Y cell lysate.