

**Anti-SOX10 Rabbit Monoclonal Antibody**  
**Catalog # ABO13687****Specification**

---

**Anti-SOX10 Rabbit Monoclonal Antibody - Product Information**

Application	IHC
Primary Accession	<a href="#">P56693</a>
Host	Rabbit
Isotype	Rabbit IgG
Reactivity	Human
Clonality	Monoclonal
Format	Liquid

**Description**

Anti-SOX10 Rabbit Monoclonal Antibody . Tested in IHC application. This antibody reacts with Human.

**Anti-SOX10 Rabbit Monoclonal Antibody - Additional Information**

**Gene ID** 6663

**Other Names**

Transcription factor SOX-10, SOX10

**Calculated MW**

49911 MW KDa

**Application Details**

IHC 1:50-1:200

**Subcellular Localization**

Cytoplasm. Nucleus.

**Tissue Specificity**

Expressed in fetal brain and in adult brain, heart, small intestine and colon.

**Contents**

Rabbit IgG in phosphate buffered saline, pH 7.4, 150mM NaCl, 0.02% sodium azide and 50% glycerol, 0.4-0.5mg/ml BSA.

**Immunogen**

A synthesized peptide derived from human SOX10

**Purification**

Affinity-chromatography

**Storage**

**Store at -20°C for one year. For short term storage and frequent use, store at 4°C for up to one month. Avoid repeated freeze-thaw cycles.**

## Anti-SOX10 Rabbit Monoclonal Antibody - Protein Information

### Name SOX10

#### Function

Transcription factor that plays a central role in developing and mature glia (By similarity). Specifically activates expression of myelin genes, during oligodendrocyte (OL) maturation, such as DUSP15 and MYRF, thereby playing a central role in oligodendrocyte maturation and CNS myelination (By similarity). Once induced, MYRF cooperates with SOX10 to implement the myelination program (By similarity). Transcriptional activator of MITF, acting synergistically with PAX3 (PubMed:<a href="http://www.uniprot.org/citations/21965087" target="\_blank">21965087</a>). Transcriptional activator of MBP, via binding to the gene promoter (By similarity).

#### Cellular Location

Cytoplasm. Nucleus. Mitochondrion outer membrane {ECO:0000250|UniProtKB:Q04888}; Peripheral membrane protein {ECO:0000250|UniProtKB:Q04888}; Cytoplasmic side {ECO:0000250|UniProtKB:Q04888}

#### Tissue Location

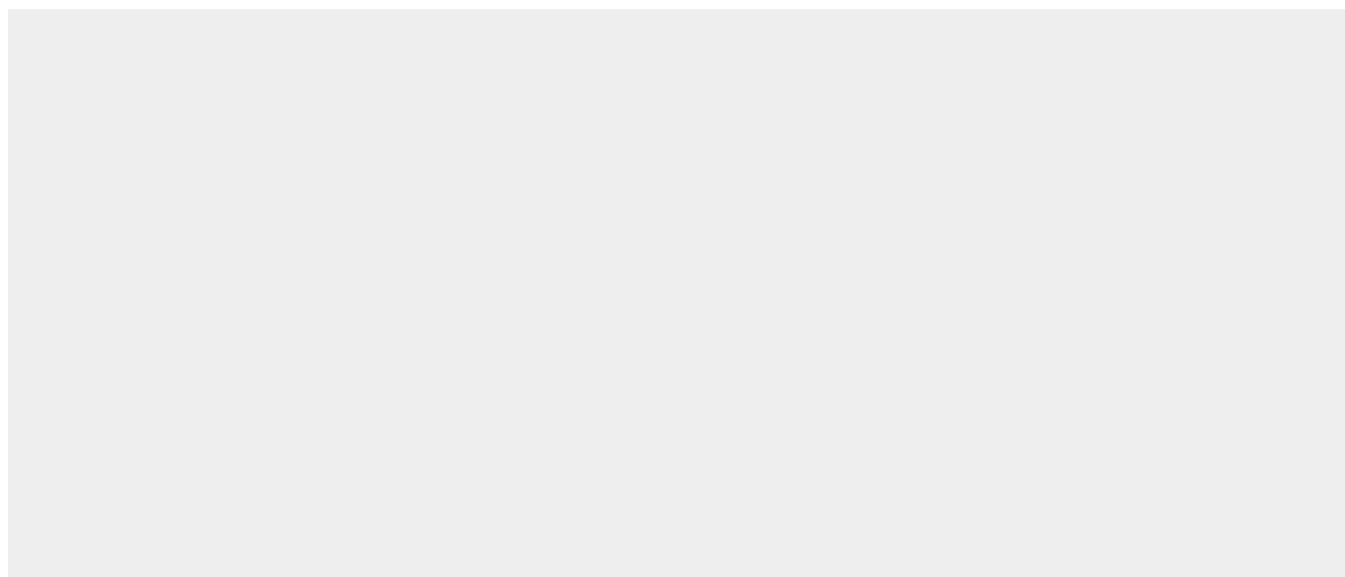
Expressed in fetal brain and in adult brain, heart, small intestine and colon

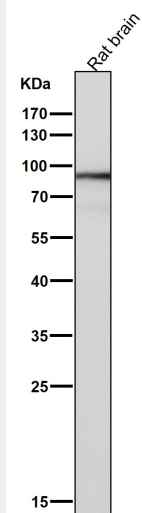
## Anti-SOX10 Rabbit Monoclonal Antibody - Protocols

Provided below are standard protocols that you may find useful for product applications.

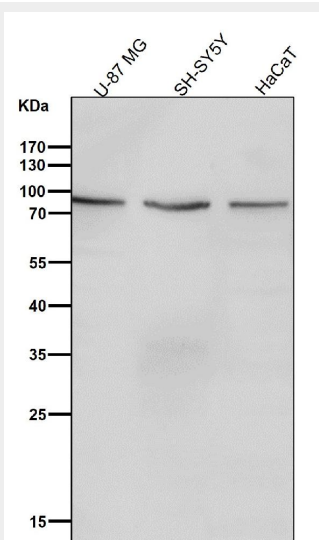
- [Western Blot](#)
- [Blocking Peptides](#)
- [Dot Blot](#)
- [Immunohistochemistry](#)
- [Immunofluorescence](#)
- [Immunoprecipitation](#)
- [Flow Cytometry](#)
- [Cell Culture](#)

## Anti-SOX10 Rabbit Monoclonal Antibody - Images

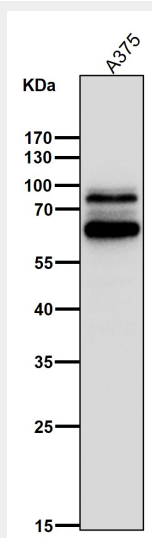




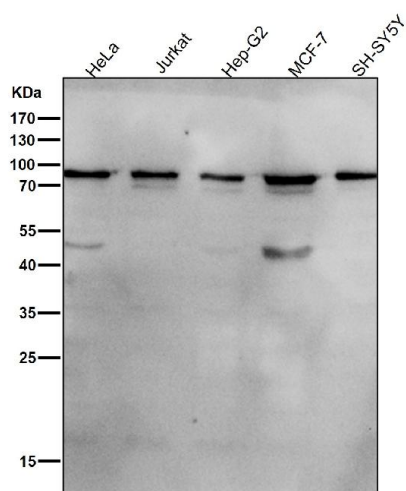
All lanes use the Antibody at 1:1K dilution for 1 hour at room temperature.



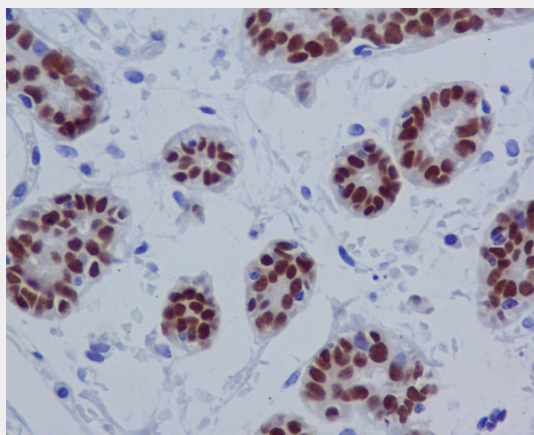
All lanes use the Antibody at 1:1K dilution for 1 hour at room temperature.



All lanes use the Antibody at 1:1K dilution for 1 hour at room temperature.



All lanes use the Antibody at 1:1K dilution for 1 hour at room temperature.



Immunohistochemical analysis of paraffin-embedded human breast, using SOX10 Antibody.