

**Anti-SIRT5/Sirtuin 5 Rabbit Monoclonal Antibody**  
**Catalog # ABO13704****Specification****Anti-SIRT5/Sirtuin 5 Rabbit Monoclonal Antibody - Product Information**

Application	WB
Primary Accession	<a href="#">Q9NXA8</a>
Host	Rabbit
Isotype	Rabbit IgG
Reactivity	Human, Mouse
Clonality	Monoclonal
Format	Liquid

**Description**

Anti-SIRT5/Sirtuin 5 Rabbit Monoclonal Antibody . Tested in WB application. This antibody reacts with Human, Mouse.

**Anti-SIRT5/Sirtuin 5 Rabbit Monoclonal Antibody - Additional Information**

**Gene ID** 23408

**Other Names**

NAD-dependent protein deacylase sirtuin-5, mitochondrial  
{ECO:0000255|HAMAP-Rule:MF\_03160}, 2.3.1.- {ECO:0000255|HAMAP-Rule:MF\_03160,  
ECO:0000269|PubMed:22076378, ECO:0000269|PubMed:24703693,  
ECO:0000269|PubMed:29180469}, Regulatory protein SIR2 homolog 5  
{ECO:0000255|HAMAP-Rule:MF\_03160}, SIR2-like protein 5  
{ECO:0000255|HAMAP-Rule:MF\_03160}, SIRT5 {ECO:0000255|HAMAP-Rule:MF\_03160}, SIR2L5

**Calculated MW**

33881 MW KDa

**Application Details**

WB 1:1000-1:2000

**Subcellular Localization**

Mitochondrion matrix. Mitochondrion intermembrane space. Cytoplasm, cytosol. Nucleus. Mainly mitochondrial. Also present extramitochondrially: a fraction is present in the cytosol and very small amounts are also detected in the nucleus.

**Tissue Specificity**

Widely expressed..

**Contents**

Rabbit IgG in phosphate buffered saline, pH 7.4, 150mM NaCl, 0.02% sodium azide and 50% glycerol, 0.4-0.5mg/ml BSA.

**Immunogen**

A synthesized peptide derived from human SIRT5

**Purification**

Affinity-chromatography

**Storage**

**Store at -20°C for one year. For short term storage and frequent use, store at 4°C for up to one month. Avoid repeated freeze-thaw cycles.**

**Anti-SIRT5/Sirtuin 5 Rabbit Monoclonal Antibody - Protein Information****Name** SIRT5 {ECO:0000255|HAMAP-Rule:MF\_03160}**Synonyms** SIR2L5**Function**

NAD-dependent lysine demalonylase, desuccinylase and deglutarylase that specifically removes malonyl, succinyl and glutaryl groups on target proteins (PubMed:<a href="http://www.uniprot.org/citations/21908771" target="\_blank">21908771</a>, PubMed:<a href="http://www.uniprot.org/citations/22076378" target="\_blank">22076378</a>, PubMed:<a href="http://www.uniprot.org/citations/24703693" target="\_blank">24703693</a>, PubMed:<a href="http://www.uniprot.org/citations/29180469" target="\_blank">29180469</a>). Activates CPS1 and contributes to the regulation of blood ammonia levels during prolonged fasting; acts by mediating desuccinylation and deglutarylation of CPS1, thereby increasing CPS1 activity in response to elevated NAD levels during fasting (PubMed:<a href="http://www.uniprot.org/citations/22076378" target="\_blank">22076378</a>, PubMed:<a href="http://www.uniprot.org/citations/24703693" target="\_blank">24703693</a>). Activates SOD1 by mediating its desuccinylation, leading to reduced reactive oxygen species (PubMed:<a href="http://www.uniprot.org/citations/24140062" target="\_blank">24140062</a>). Activates SHMT2 by mediating its desuccinylation (PubMed:<a href="http://www.uniprot.org/citations/29180469" target="\_blank">29180469</a>). Modulates ketogenesis through the desuccinylation and activation of HMGCS2 (By similarity). Has weak NAD-dependent protein deacetylase activity; however this activity may not be physiologically relevant in vivo. Can deacetylate cytochrome c (CYCS) and a number of other proteins in vitro such as UOX.

**Cellular Location**

Mitochondrion matrix. Mitochondrion intermembrane space. Cytoplasm, cytosol. Nucleus. Note=Mainly mitochondrial. Also present extramitochondrially, with a fraction present in the cytosol and very small amounts also detected in the nucleus [Isoform 2]: Mitochondrion {ECO:0000255|HAMAP- Rule:MF\_03160, ECO:0000269|PubMed:21143562}

**Tissue Location**

Widely expressed..

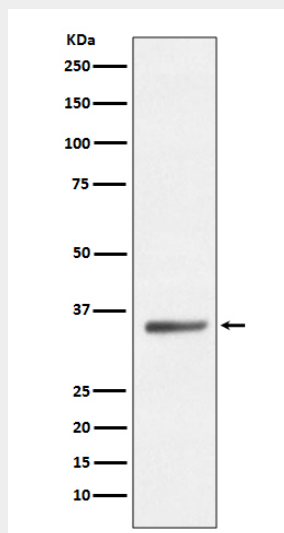
**Anti-SIRT5/Sirtuin 5 Rabbit Monoclonal Antibody - Protocols**

Provided below are standard protocols that you may find useful for product applications.

- [Western Blot](#)
- [Blocking Peptides](#)
- [Dot Blot](#)
- [Immunohistochemistry](#)
- [Immunofluorescence](#)
- [Immunoprecipitation](#)

- [Flow Cytometry](#)
- [Cell Culture](#)

### Anti-SIRT5/Sirtuin 5 Rabbit Monoclonal Antibody - Images



Western blot analysis of SIRT5 expression in HeLa cell lysate.