

Anti-PTP1B PTPN1 Rabbit Monoclonal Antibody
Catalog # ABO13725**Specification**

Anti-PTP1B PTPN1 Rabbit Monoclonal Antibody - Product Information

Application	WB, IHC, IF, ICC, FC
Primary Accession	P18031
Host	Rabbit
Isotype	Rabbit IgG
Reactivity	Human
Clonality	Monoclonal
Format	Liquid

Description

Anti-PTP1B PTPN1 Rabbit Monoclonal Antibody . Tested in WB, IHC, ICC/IF, Flow Cytometry applications. This antibody reacts with Human.

Anti-PTP1B PTPN1 Rabbit Monoclonal Antibody - Additional Information

Gene ID 5770

Other Names

Tyrosine-protein phosphatase non-receptor type 1, 3.1.3.48, Protein-tyrosine phosphatase 1B, PTP-1B, PTPN1, PTP1B

Calculated MW

49967 MW KDa

Application Details

WB 1:500-1:2000
IHC 1:50-1:100
ICC/IF 1:50-1:100
FC 1:20

Subcellular Localization

Endoplasmic reticulum membrane ; Peripheral membrane protein ; Cytoplasmic side. Interacts with EPHA3 at the cell membrane.

Contents

Rabbit IgG in phosphate buffered saline, pH 7.4, 150mM NaCl, 0.02% sodium azide and 50% glycerol, 0.4-0.5mg/ml BSA.

Immunogen

A synthesized peptide derived from human PTP1B

Purification

Affinity-chromatography

Storage

Store at -20°C for one year. For short term storage and frequent use, store at 4°C for up to one month. Avoid repeated freeze-thaw cycles.

Anti-PTP1B PTPN1 Rabbit Monoclonal Antibody - Protein Information

Name PTPN1

Synonyms PTP1B

Function

Tyrosine-protein phosphatase which acts as a regulator of endoplasmic reticulum unfolded protein response. Mediates dephosphorylation of EIF2AK3/PERK; inactivating the protein kinase activity of EIF2AK3/PERK. May play an important role in CKII- and p60c- src-induced signal transduction cascades. May regulate the EFNA5-EPHA3 signaling pathway which modulates cell reorganization and cell-cell repulsion. May also regulate the hepatocyte growth factor receptor signaling pathway through dephosphorylation of MET.

Cellular Location

Endoplasmic reticulum membrane; Peripheral membrane protein; Cytoplasmic side Note=Interacts with EPHA3 at the cell membrane

Tissue Location

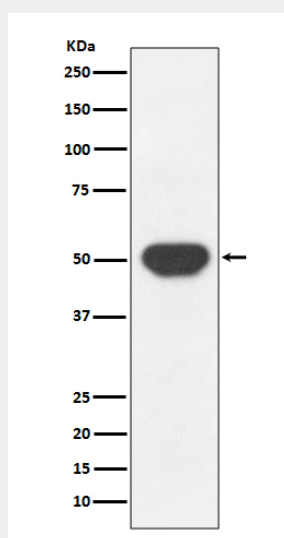
Expressed in keratinocytes (at protein level).

Anti-PTP1B PTPN1 Rabbit Monoclonal Antibody - Protocols

Provided below are standard protocols that you may find useful for product applications.

- [Western Blot](#)
- [Blocking Peptides](#)
- [Dot Blot](#)
- [Immunohistochemistry](#)
- [Immunofluorescence](#)
- [Immunoprecipitation](#)
- [Flow Cytometry](#)
- [Cell Culture](#)

Anti-PTP1B PTPN1 Rabbit Monoclonal Antibody - Images



Western blot analysis of PTP1B expression in HeLa cell lysate.