

**Anti-TIMP1 Rabbit Monoclonal Antibody**  
**Catalog # ABO13730****Specification**

---

**Anti-TIMP1 Rabbit Monoclonal Antibody - Product Information**

Application	WB, IHC
Primary Accession	<a href="#">P01033</a>
Host	Rabbit
Isotype	Rabbit IgG
Reactivity	Human
Clonality	Monoclonal
Format	Liquid

**Description**

Anti-TIMP1 Rabbit Monoclonal Antibody . Tested in WB, IHC applications. This antibody reacts with Human.

**Anti-TIMP1 Rabbit Monoclonal Antibody - Additional Information**

**Gene ID** 7076

**Other Names**

Metalloproteinase inhibitor 1, Erythroid-potentiating activity, EPA, Fibroblast collagenase inhibitor, Collagenase inhibitor, Tissue inhibitor of metalloproteinases 1, TIMP-1, TIMP1, CLGI, TIMP

**Calculated MW**

23171 MW KDa

**Application Details**

WB 1:500-1:1000<br>IHC 1:50-1:200

**Subcellular Localization**

Secreted.

**Tissue Specificity**

Detected in rheumatoid synovial fluid (at protein level)..

**Contents**

Rabbit IgG in phosphate buffered saline, pH 7.4, 150mM NaCl, 0.02% sodium azide and 50% glycerol, 0.4-0.5mg/ml BSA.

**Immunogen**

A synthesized peptide derived from human TIMP1

**Purification**

Affinity-chromatography

Storage

**Store at -20°C for one year. For short term storage and frequent use, store at 4°C for up to one month. Avoid repeated**

freeze-thaw cycles.

## Anti-TIMP1 Rabbit Monoclonal Antibody - Protein Information

**Name** TIMP1

**Synonyms** CLGI, TIMP

### Function

Metalloproteinase inhibitor that functions by forming one to one complexes with target metalloproteinases, such as collagenases, and irreversibly inactivates them by binding to their catalytic zinc cofactor. Acts on MMP1, MMP2, MMP3, MMP7, MMP8, MMP9, MMP10, MMP11, MMP12, MMP13 and MMP16. Does not act on MMP14. Also functions as a growth factor that regulates cell differentiation, migration and cell death and activates cellular signaling cascades via CD63 and ITGB1. Plays a role in integrin signaling. Mediates erythropoiesis in vitro; but, unlike IL3, it is species-specific, stimulating the growth and differentiation of only human and murine erythroid progenitors.

### Cellular Location

Secreted

### Tissue Location

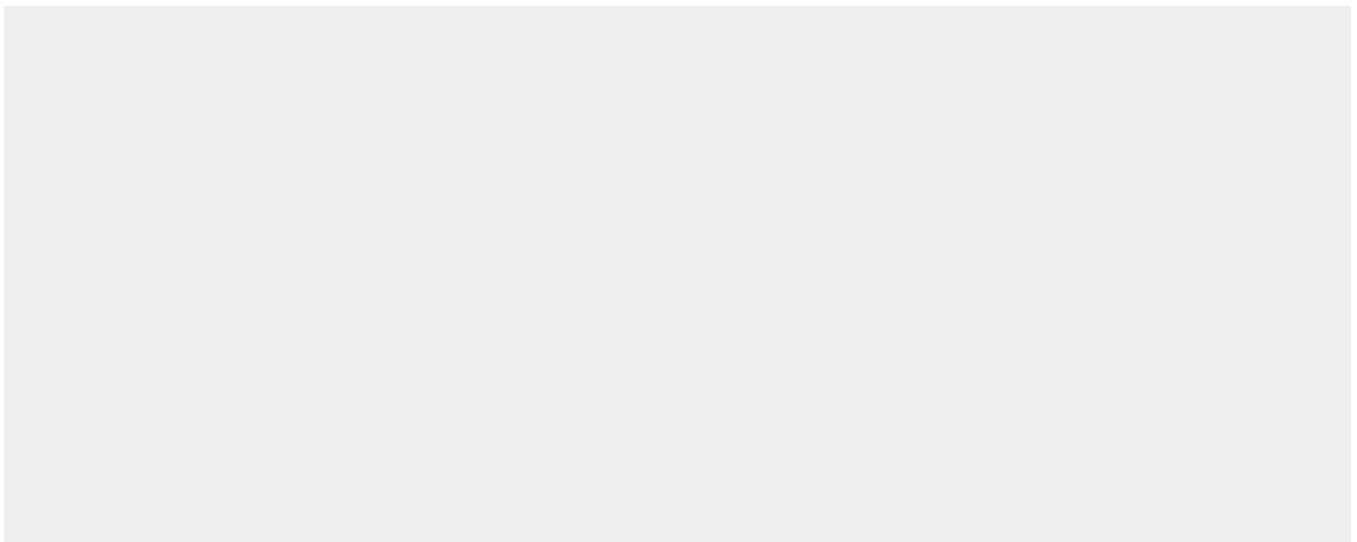
Detected in rheumatoid synovial fluid (at protein level).

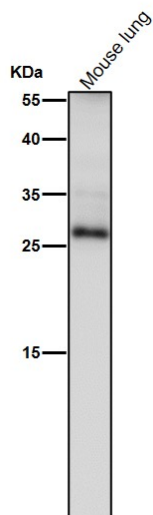
## Anti-TIMP1 Rabbit Monoclonal Antibody - Protocols

Provided below are standard protocols that you may find useful for product applications.

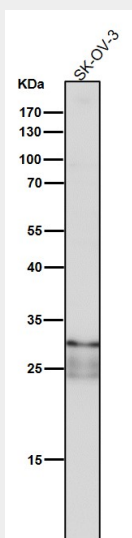
- [Western Blot](#)
- [Blocking Peptides](#)
- [Dot Blot](#)
- [Immunohistochemistry](#)
- [Immunofluorescence](#)
- [Immunoprecipitation](#)
- [Flow Cytometry](#)
- [Cell Culture](#)

## Anti-TIMP1 Rabbit Monoclonal Antibody - Images

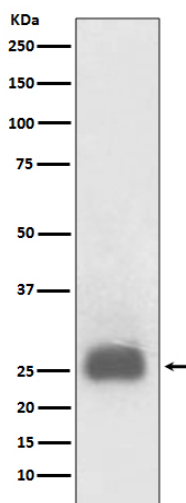




All lanes use the Antibody at 1:1K dilution for 1 hour at room temperature.



All lanes use the Antibody at 1:1K dilution for 1 hour at room temperature.



Western blot analysis of TIMP1 expression in HL60 cell lysate treated with TPA.