

**Anti-NEDD8 Rabbit Monoclonal Antibody**  
Catalog # ABO13732

**Specification**

---

**Anti-NEDD8 Rabbit Monoclonal Antibody - Product Information**

Application	WB, IHC, IF, ICC, IP
Primary Accession	<a href="#">Q15843</a>
Host	Rabbit
Isotype	Rabbit IgG
Reactivity	Rat, Human, Mouse
Clonality	Monoclonal
Format	Liquid

**Description**

Anti-NEDD8 Rabbit Monoclonal Antibody . Tested in WB, IHC, ICC/IF, IP applications. This antibody reacts with Human, Mouse, Rat.

**Anti-NEDD8 Rabbit Monoclonal Antibody - Additional Information**

**Gene ID** 4738

**Other Names**

NEDD8, Neddylin, Neural precursor cell expressed developmentally down-regulated protein 8, NEDD-8, Ubiquitin-like protein Nedd8, NEDD8 {ECO:0000303|PubMed:9694792, ECO:0000312|HGNC:HGNC:7732}

**Calculated MW**

9072 MW KDa

**Application Details**

WB 1:500-1:2000<br>IHC 1:50-1:200<br>ICC/IF 1:50-1:200<br>IP 1:20

**Subcellular Localization**

Nucleus. Mainly nuclear.

**Tissue Specificity**

Highly expressed in heart, skeletal muscle, spleen, thymus, prostate, testis, ovary, colon and leukocytes..

**Contents**

Rabbit IgG in phosphate buffered saline, pH 7.4, 150mM NaCl, 0.02% sodium azide and 50% glycerol, 0.4-0.5mg/ml BSA.

**Immunogen**

A synthesized peptide derived from human NEDD8

**Purification**

Affinity-chromatography

Storage

**Store at -20°C for one year. For short term**

storage and frequent use, store at 4°C for up to one month. Avoid repeated freeze-thaw cycles.

## Anti-NEDD8 Rabbit Monoclonal Antibody - Protein Information

**Name** NEDD8 {ECO:0000303|PubMed:9694792, ECO:0000312|HGNC:HGNC:7732}

### Function

Ubiquitin-like protein which plays an important role in cell cycle control and embryogenesis via its conjugation to a limited number of cellular proteins, such as cullins or p53/TP53 (PubMed:<a href="http://www.uniprot.org/citations/10318914" target="\_blank">10318914</a>, PubMed:<a href="http://www.uniprot.org/citations/10597293" target="\_blank">10597293</a>, PubMed:<a href="http://www.uniprot.org/citations/11953428" target="\_blank">11953428</a>, PubMed:<a href="http://www.uniprot.org/citations/14690597" target="\_blank">14690597</a>, PubMed:<a href="http://www.uniprot.org/citations/15242646" target="\_blank">15242646</a>, PubMed:<a href="http://www.uniprot.org/citations/9694792" target="\_blank">9694792</a>, PubMed:<a href="http://www.uniprot.org/citations/38605244" target="\_blank">38605244</a>, PubMed:<a href="http://www.uniprot.org/citations/38316879" target="\_blank">38316879</a>). Attachment of NEDD8 to cullins is critical for the recruitment of E2 to the cullin-RING- based E3 ubiquitin-protein ligase complex, thus facilitating polyubiquitination and proteasomal degradation of cyclins and other regulatory proteins (PubMed:<a href="http://www.uniprot.org/citations/10318914" target="\_blank">10318914</a>, PubMed:<a href="http://www.uniprot.org/citations/10597293" target="\_blank">10597293</a>, PubMed:<a href="http://www.uniprot.org/citations/11953428" target="\_blank">11953428</a>, PubMed:<a href="http://www.uniprot.org/citations/20688984" target="\_blank">20688984</a>, PubMed:<a href="http://www.uniprot.org/citations/9694792" target="\_blank">9694792</a>, PubMed:<a href="http://www.uniprot.org/citations/38605244" target="\_blank">38605244</a>, PubMed:<a href="http://www.uniprot.org/citations/38316879" target="\_blank">38316879</a>). Attachment of NEDD8 to p53/TP53 inhibits p53/TP53 transcriptional activity (PubMed:<a href="http://www.uniprot.org/citations/15242646" target="\_blank">15242646</a>). Covalent attachment to its substrates requires prior activation by the E1 complex UBE1C-APPBP1 and linkage to the E2 enzyme UBE2M (PubMed:<a href="http://www.uniprot.org/citations/14690597" target="\_blank">14690597</a>).

### Cellular Location

Nucleus. Note=Mainly nuclear.

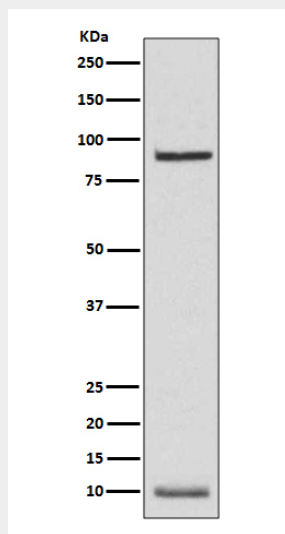
### Tissue Location

Highly expressed in heart, skeletal muscle, spleen, thymus, prostate, testis, ovary, colon and leukocytes

## Anti-NEDD8 Rabbit Monoclonal Antibody - Protocols

Provided below are standard protocols that you may find useful for product applications.

- [Western Blot](#)
- [Blocking Peptides](#)
- [Dot Blot](#)
- [Immunohistochemistry](#)
- [Immunofluorescence](#)
- [Immunoprecipitation](#)
- [Flow Cytometry](#)
- [Cell Culture](#)

**Anti-NEDD8 Rabbit Monoclonal Antibody - Images**

Western blot analysis of NEDD8 expression in K562 cell lysate.