

Anti-BMP11 GDF11 Rabbit Monoclonal Antibody
Catalog # ABO13733**Specification**

Anti-BMP11 GDF11 Rabbit Monoclonal Antibody - Product Information

Application	WB, IHC, IF, ICC
Primary Accession	O95390
Host	Rabbit
Isotype	Rabbit IgG
Reactivity	Rat, Human
Clonality	Monoclonal
Format	Liquid

Description

Anti-BMP11 GDF11 Rabbit Monoclonal Antibody . Tested in WB, IHC, ICC/IF applications. This antibody reacts with Human, Rat.

Anti-BMP11 GDF11 Rabbit Monoclonal Antibody - Additional Information

Gene ID 10220

Other Names

Growth/differentiation factor 11, GDF-11, Bone morphogenetic protein 11, BMP-11, GDF11, BMP11 {ECO:0000303|PubMed:10075854}

Calculated MW

45091 MW KDa

Application Details

WB 1:500-1:2000
IHC 1:50-1:200
ICC/IF 1:50-1:200

Subcellular Localization

Secreted.

Contents

Rabbit IgG in phosphate buffered saline, pH 7.4, 150mM NaCl, 0.02% sodium azide and 50% glycerol, 0.4-0.5mg/ml BSA.

Immunogen

A synthesized peptide derived from human BMP11

Purification

Affinity-chromatography

Storage

Store at -20°C for one year. For short term storage and frequent use, store at 4°C for up to one month. Avoid repeated freeze-thaw cycles.

Anti-BMP11 GDF11 Rabbit Monoclonal Antibody - Protein Information

Name GDF11

Synonyms BMP11 {ECO:0000303|PubMed:10075854}

Function

Secreted signal that acts globally to regulate anterior/posterior axial patterning during development. May play critical roles in patterning both mesodermal and neural tissues (By similarity). It is required for proper vertebral patterning and orofacial development (PubMed:31215115). Signals through activin receptors type-2, ACVR2A and ACVR2B, and activin receptors type-1, ACVR1B, ACVR1C and TGFBR1 leading to the phosphorylation of SMAD2 and SMAD3 (PubMed:28257634).

Cellular Location

Secreted.

Tissue Location

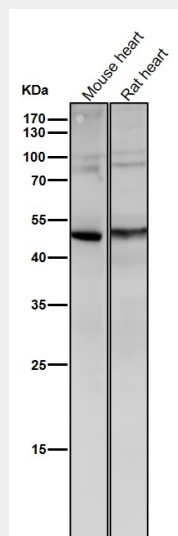
In the embryo, strong expression is seen in the palatal epithelia, including the medial edge epithelial and midline epithelial seam of the palatal shelves. Less pronounced expression is also seen throughout the palatal shelf and tongue mesenchyme

Anti-BMP11 GDF11 Rabbit Monoclonal Antibody - Protocols

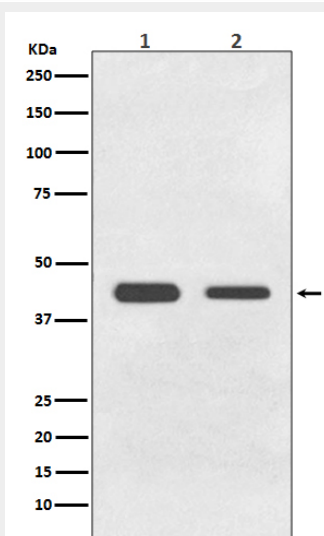
Provided below are standard protocols that you may find useful for product applications.

- [Western Blot](#)
- [Blocking Peptides](#)
- [Dot Blot](#)
- [Immunohistochemistry](#)
- [Immunofluorescence](#)
- [Immunoprecipitation](#)
- [Flow Cytometry](#)
- [Cell Culture](#)

Anti-BMP11 GDF11 Rabbit Monoclonal Antibody - Images



All lanes use the Antibody at 1:1K dilution for 1 hour at room temperature.



Western blot analysis of BMP11 expression in (1) HeLa cell lysate; (2) C6 cell lysate.