

Anti-S100P Rabbit Monoclonal Antibody
Catalog # ABO13739**Specification**

Anti-S100P Rabbit Monoclonal Antibody - Product Information

Application	WB, IHC, IF, ICC, IP
Primary Accession	P25815
Host	Rabbit
Isotype	Rabbit IgG
Reactivity	Human
Clonality	Monoclonal
Format	Liquid

Description

Anti-S100P Rabbit Monoclonal Antibody . Tested in WB, IHC, ICC/IF, IP applications. This antibody reacts with Human.

Anti-S100P Rabbit Monoclonal Antibody - Additional Information

Gene ID 6286

Other Names

Protein S100-P, Migration-inducing gene 9 protein, MIG9, Protein S100-E, S100 calcium-binding protein P, S100P, S100E

Calculated MW

10400 MW KDa

Application Details

WB 1:500-1:2000
IHC 1:50-1:200
ICC/IF 1:50-1:200
IP 1:50

Subcellular Localization

Nucleus. Cytoplasm. Cell projection, microvillus membrane. Colocalizes with S100PBP in the nucleus. Colocalizes with EZR in the microvilli in a calcium- dependent manner.

Tissue Specificity

Detected in all of the tissues except brain, testis and small intestine, expression level is higher in placenta, heart, lung, skeletal muscle, spleen and leukocyte. Up- regulated in various pancreatic ductal adenocarcinomas and pancreatic intraepithelial neoplasias..

Contents

Rabbit IgG in phosphate buffered saline, pH 7.4, 150mM NaCl, 0.02% sodium azide and 50% glycerol, 0.4-0.5mg/ml BSA.

Immunogen

A synthesized peptide derived from human S100P

Purification

Affinity-chromatography

Storage

Store at -20°C for one year. For short term storage and frequent use, store at 4°C for up to one month. Avoid repeated freeze-thaw cycles.

Anti-S100P Rabbit Monoclonal Antibody - Protein Information

Name S100P

Synonyms S100E

Function

May function as calcium sensor and contribute to cellular calcium signaling. In a calcium-dependent manner, functions by interacting with other proteins, such as EZR and PPP5C, and indirectly plays a role in physiological processes like the formation of microvilli in epithelial cells. May stimulate cell proliferation in an autocrine manner via activation of the receptor for activated glycation end products (RAGE).

Cellular Location

Nucleus. Cytoplasm. Cell projection, microvillus membrane. Note=Colocalizes with S100PBP in the nucleus. Colocalizes with EZR in the microvilli in a calcium-dependent manner

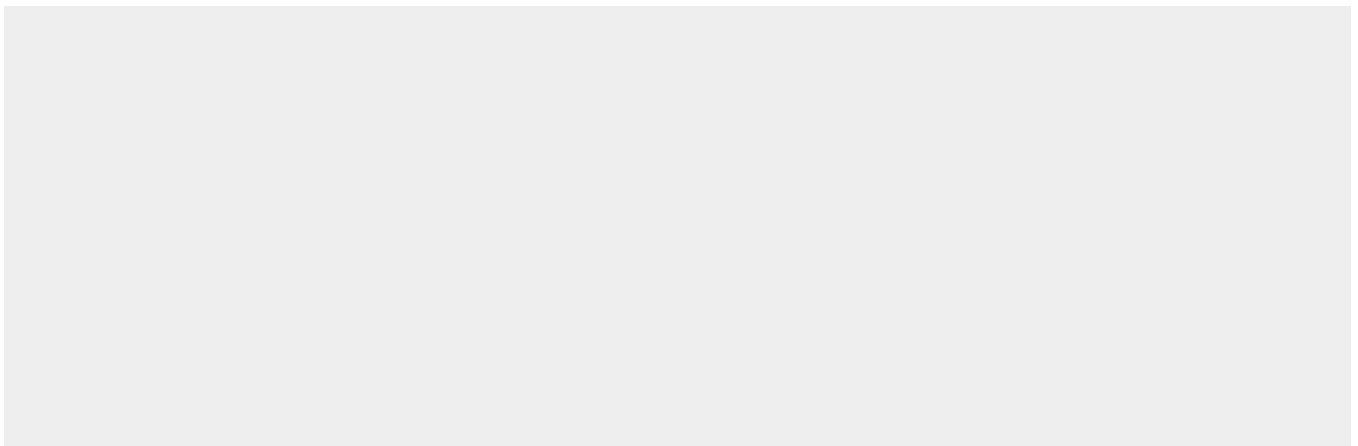
Tissue Location

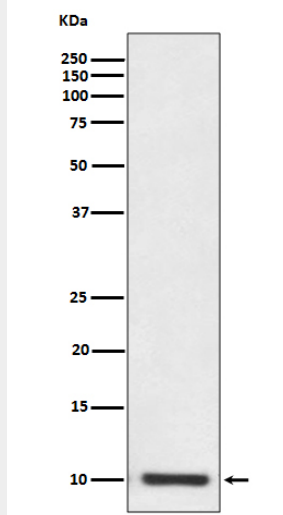
Detected in all of the tissues except brain, testis and small intestine, expression level is higher in placenta, heart, lung, skeletal muscle, spleen and leukocyte. Up-regulated in various pancreatic ductal adenocarcinomas and pancreatic intraepithelial neoplasias.

Anti-S100P Rabbit Monoclonal Antibody - Protocols

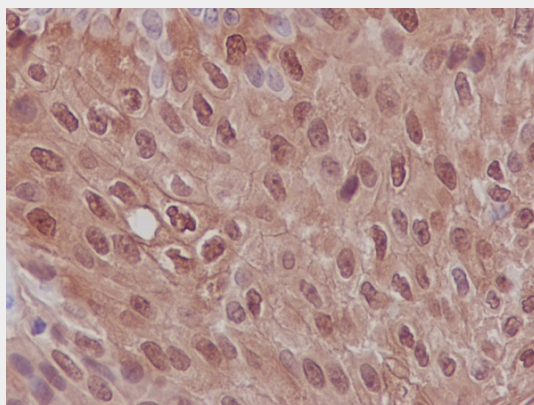
Provided below are standard protocols that you may find useful for product applications.

- [Western Blot](#)
- [Blocking Peptides](#)
- [Dot Blot](#)
- [Immunohistochemistry](#)
- [Immunofluorescence](#)
- [Immunoprecipitation](#)
- [Flow Cytometry](#)
- [Cell Culture](#)

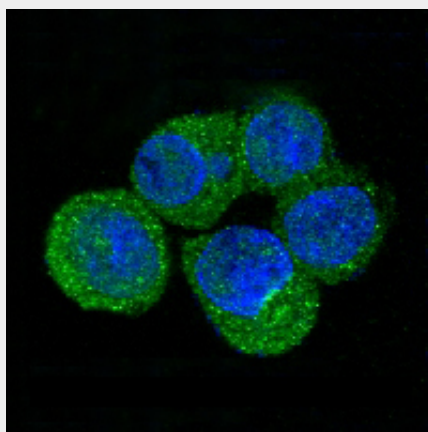
Anti-S100P Rabbit Monoclonal Antibody - Images



Western blot analysis of S100P expression in SW480 cell lysate.



Immunohistochemical analysis of paraffin-embedded human bladder carcinoma, using S100P Antibody.



Immunofluorescent analysis of SW480 cells, using S100P Antibody.