

Anti-Ctip2 Rabbit Monoclonal Antibody
Catalog # ABO13741**Specification**

Anti-Ctip2 Rabbit Monoclonal Antibody - Product Information

Application	WB
Primary Accession	Q9C0K0
Host	Rabbit
Isotype	Rabbit IgG
Reactivity	Human
Clonality	Monoclonal
Format	Liquid

Description

Anti-Ctip2 Rabbit Monoclonal Antibody . Tested in WB application. This antibody reacts with Human.

Anti-Ctip2 Rabbit Monoclonal Antibody - Additional Information

Gene ID 64919

Other Names

B-cell lymphoma/leukemia 11B, BCL-11B, B-cell CLL/lymphoma 11B, COUP-TF-interacting protein 2, Radiation-induced tumor suppressor gene 1 protein, hRit1, BCL11B, CTIP2, RIT1

Calculated MW

95519 MW KDa

Application Details

WB 1:500-1:2000

Subcellular Localization

Nucleus.

Tissue Specificity

Highly expressed in brain and in malignant T- cell lines derived from patients with adult T-cell leukemia/lymphoma.

Contents

Rabbit IgG in phosphate buffered saline, pH 7.4, 150mM NaCl, 0.02% sodium azide and 50% glycerol, 0.4-0.5mg/ml BSA.

Immunogen

A synthesized peptide derived from human Ctip2

Purification

Affinity-chromatography

Storage

Store at -20°C for one year. For short term storage and frequent use, store at 4°C for

**up to one month. Avoid repeated
freeze-thaw cycles.**

Anti-Ctip2 Rabbit Monoclonal Antibody - Protein Information

Name BCL11B

Synonyms CTIP2, RIT1

Function

Key regulator of both differentiation and survival of T- lymphocytes during thymocyte development in mammals. Essential in controlling the responsiveness of hematopoietic stem cells to chemotactic signals by modulating the expression of the receptors CCR7 and CCR9, which direct the movement of progenitor cells from the bone marrow to the thymus (PubMed:27959755). Is a regulator of IL2 promoter and enhances IL2 expression in activated CD4(+) T-lymphocytes (PubMed:16809611). Tumor-suppressor that represses transcription through direct, TFCOUP2-independent binding to a GC-rich response element (By similarity). May also function in the P53-signaling pathway (By similarity).

Cellular Location

Nucleus.

Tissue Location

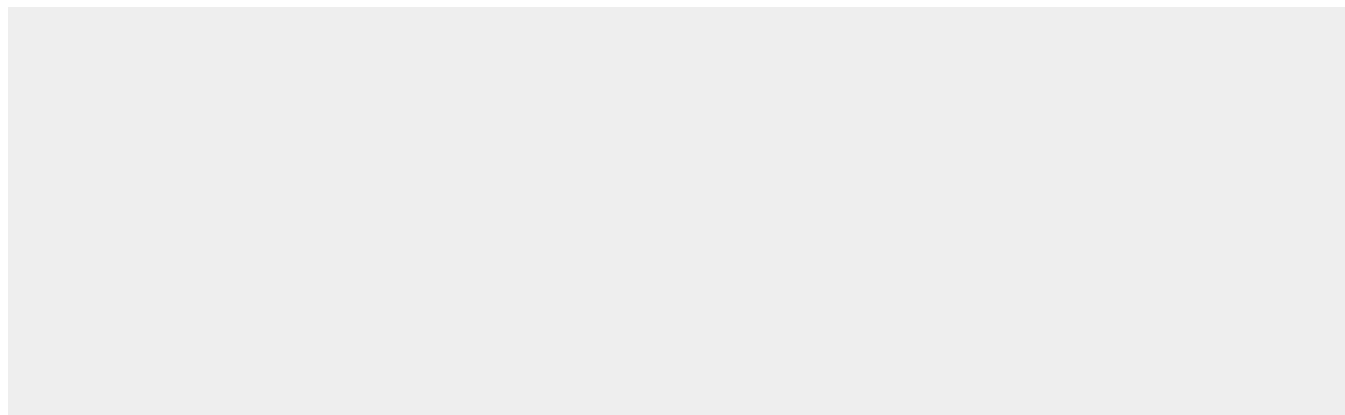
Highly expressed in brain and in malignant T-cell lines derived from patients with adult T-cell leukemia/lymphoma

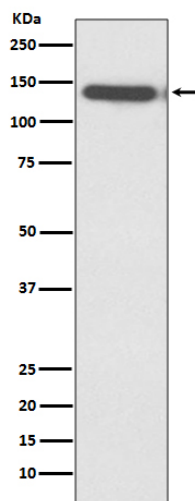
Anti-Ctip2 Rabbit Monoclonal Antibody - Protocols

Provided below are standard protocols that you may find useful for product applications.

- [Western Blot](#)
- [Blocking Peptides](#)
- [Dot Blot](#)
- [Immunohistochemistry](#)
- [Immunofluorescence](#)
- [Immunoprecipitation](#)
- [Flow Cytometry](#)
- [Cell Culture](#)

Anti-Ctip2 Rabbit Monoclonal Antibody - Images





Western blot analysis of CtIP2 expression in Jurkat cell lysate.