

**Anti-GATA3 Rabbit Monoclonal Antibody**  
**Catalog # ABO13789****Specification**

---

**Anti-GATA3 Rabbit Monoclonal Antibody - Product Information**

Application	WB, IHC, IF, ICC, FC
Primary Accession	<a href="#">P23771</a>
Host	Rabbit
Isotype	Rabbit IgG
Reactivity	Human
Clonality	Monoclonal
Format	Liquid

**Description**

Anti-GATA3 Rabbit Monoclonal Antibody . Tested in WB, IHC, ICC/IF, Flow Cytometry applications.  
This antibody reacts with Human.

**Anti-GATA3 Rabbit Monoclonal Antibody - Additional Information**

**Gene ID** 2625

**Other Names**

Trans-acting T-cell-specific transcription factor GATA-3, GATA-binding factor 3, GATA3

**Calculated MW**

47916 MW KDa

**Application Details**

WB 1:500-1:2000<br>IHC 1:50-1:200<br>ICC/IF 1:50-1:200<br>FC 1:100

**Subcellular Localization**

Nucleus.

**Tissue Specificity**

T-cells and endothelial cells.

**Contents**

Rabbit IgG in phosphate buffered saline, pH 7.4, 150mM NaCl, 0.02% sodium azide and 50% glycerol, 0.4-0.5mg/ml BSA.

**Immunogen**

A synthesized peptide derived from human GATA3

**Purification**

Affinity-chromatography

**Storage**

**Store at -20°C for one year. For short term storage and frequent use, store at 4°C for up to one month. Avoid repeated freeze-thaw cycles.**

## Anti-GATA3 Rabbit Monoclonal Antibody - Protein Information

**Name** GATA3

### Function

Transcriptional activator which binds to the enhancer of the T-cell receptor alpha and delta genes. Binds to the consensus sequence 5'-AGATAG-3'. Required for the T-helper 2 (Th2) differentiation process following immune and inflammatory responses. Positively regulates ASB2 expression (By similarity). Coordinates macrophage transcriptional activation and UCP2-dependent metabolic reprogramming in response to IL33. Upon tissue injury, acts downstream of IL33 signaling to drive differentiation of inflammation-resolving alternatively activated macrophages.

### Cellular Location

Nucleus.

### Tissue Location

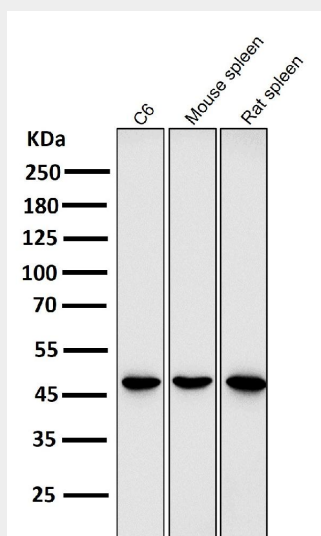
T-cells and endothelial cells.

## Anti-GATA3 Rabbit Monoclonal Antibody - Protocols

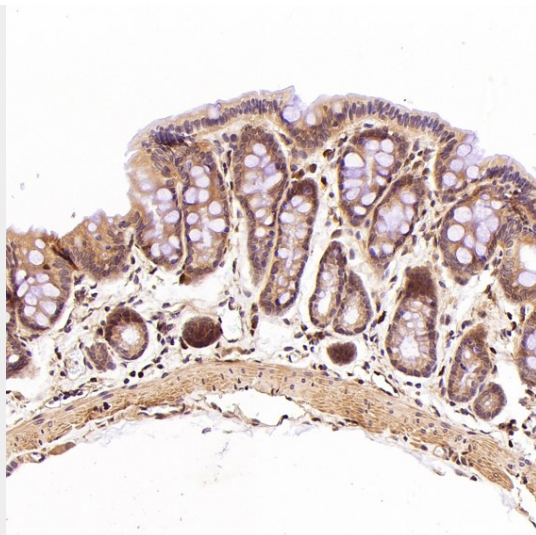
Provided below are standard protocols that you may find useful for product applications.

- [Western Blot](#)
- [Blocking Peptides](#)
- [Dot Blot](#)
- [Immunohistochemistry](#)
- [Immunofluorescence](#)
- [Immunoprecipitation](#)
- [Flow Cytometry](#)
- [Cell Culture](#)

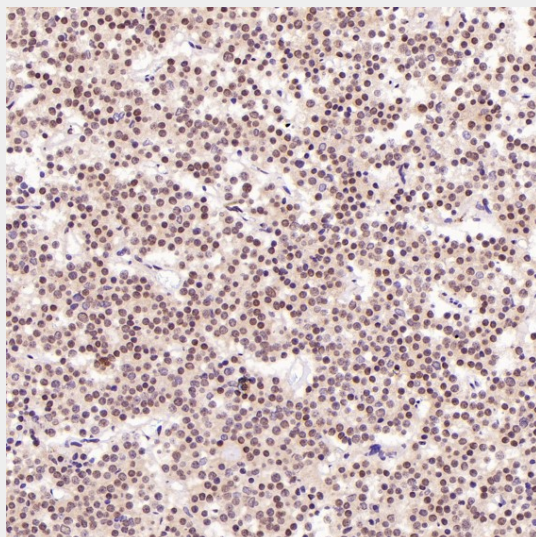
## Anti-GATA3 Rabbit Monoclonal Antibody - Images



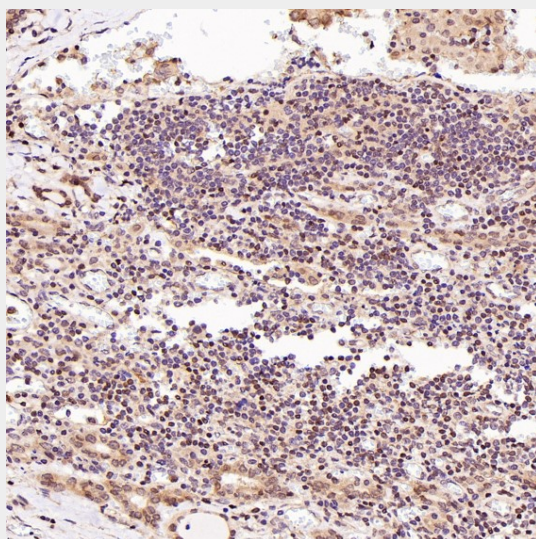
All lanes use the Antibody at 1:2K dilution for 1 hour at room temperature.



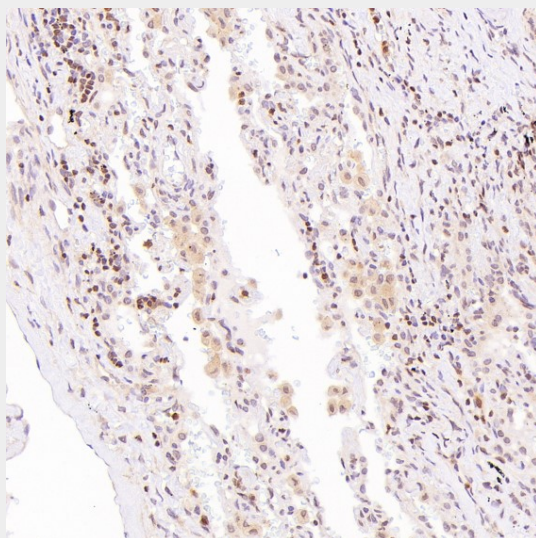
Immunohistochemical analysis of paraffin-embedded Rat intestine, using the Antibody at 1:500 dilution.



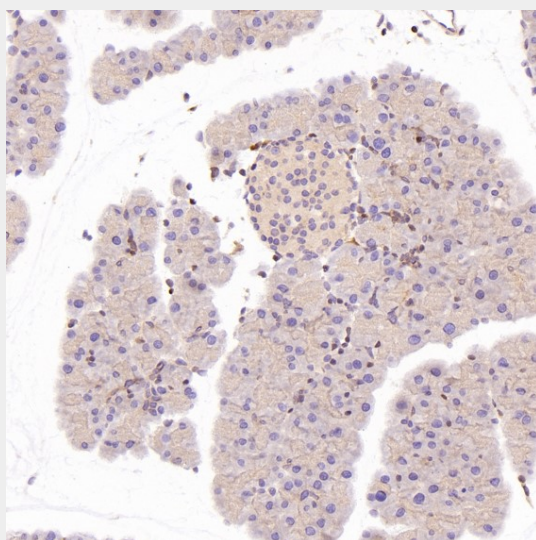
Immunohistochemical analysis of paraffin-embedded Human pituitary tumor, using the Antibody at 1:250 dilution.



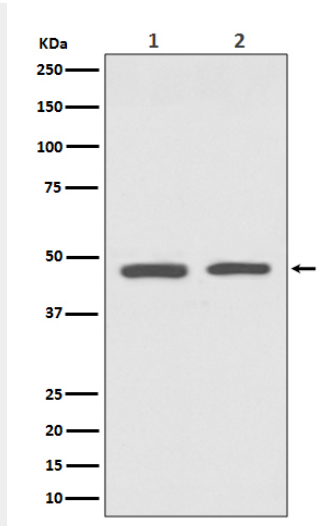
Immunohistochemical analysis of paraffin-embedded Human thyroid cancer, using the Antibody at 1:250 dilution.



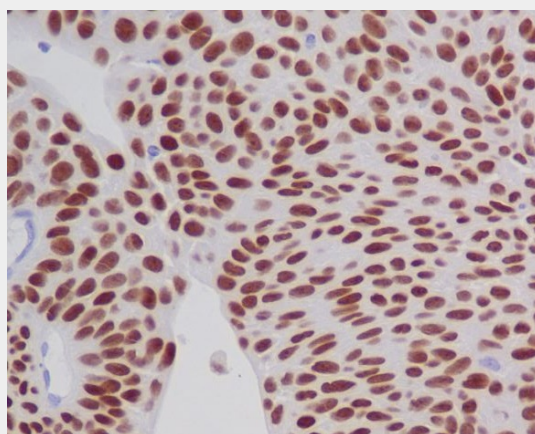
Immunohistochemical analysis of paraffin-embedded Human small cell lung cancer , using the Antibody at 1:1000 dilution.



Immunohistochemical analysis of paraffin-embedded Mouse pancreas, using the Antibody at 1:500 dilution.



Western blot analysis of GATA3 expression in (1) SH-SY5Y cell lysate; (2) Jurkat cell lysate.



Immunohistochemical analysis of paraffin-embedded human bladder cancer, using GATA3 Antibody.