

Anti-BubR1 BUB1B Rabbit Monoclonal Antibody
Catalog # ABO13800**Specification**

Anti-BubR1 BUB1B Rabbit Monoclonal Antibody - Product Information

Application	WB, IHC, IP, FC
Primary Accession	O60566
Host	Rabbit
Isotype	Rabbit IgG
Reactivity	Rat, Human, Mouse
Clonality	Monoclonal
Format	Liquid

Description

Anti-BubR1 BUB1B Rabbit Monoclonal Antibody . Tested in WB, IHC, IP, Flow Cytometry applications. This antibody reacts with Human, Mouse, Rat.

Anti-BubR1 BUB1B Rabbit Monoclonal Antibody - Additional Information

Gene ID 701

Other Names

Mitotic checkpoint serine/threonine-protein kinase BUB1 beta, 2.7.11.1, MAD3/BUB1-related protein kinase, hBUBR1, Mitotic checkpoint kinase MAD3L, Protein SSK1, BUB1B, BUBR1, MAD3L, SSK1

Calculated MW

119545 MW KDa

Application Details

WB 1:1000-1:5000
IHC 1:50-1:200
IP 1:30
FC 1:50

Subcellular Localization

Cytoplasm. Nucleus. Chromosome, centromere, kinetochore. Cytoplasm, cytoskeleton, microtubule organizing center, centrosome. Cytoplasmic in interphase cells. Associates with the kinetochores in early prophase. Kinetochore localization requires BUB1, PLK1 and CASC5.

Tissue Specificity

Highly expressed in thymus followed by spleen. Preferentially expressed in tissues with a high mitotic index..

Contents

Rabbit IgG in phosphate buffered saline, pH 7.4, 150mM NaCl, 0.02% sodium azide and 50% glycerol, 0.4-0.5mg/ml BSA.

Immunogen

A synthesized peptide derived from human BubR1

Purification

Affinity-chromatography

Storage

Store at -20°C for one year. For short term storage and frequent use, store at 4°C for up to one month. Avoid repeated freeze-thaw cycles.

Anti-BubR1 BUB1B Rabbit Monoclonal Antibody - Protein Information

Name BUB1B

Synonyms BUBR1, MAD3L, SSK1

Function

Essential component of the mitotic checkpoint. Required for normal mitosis progression. The mitotic checkpoint delays anaphase until all chromosomes are properly attached to the mitotic spindle. One of its checkpoint functions is to inhibit the activity of the anaphase-promoting complex/cyclosome (APC/C) by blocking the binding of CDC20 to APC/C, independently of its kinase activity. The other is to monitor kinetochore activities that depend on the kinetochore motor CENPE. Required for kinetochore localization of CENPE. Negatively regulates PLK1 activity in interphase cells and suppresses centrosome amplification. Also implicated in triggering apoptosis in polyploid cells that exit aberrantly from mitotic arrest. May play a role for tumor suppression.

Cellular Location

Cytoplasm. Nucleus. Chromosome, centromere, kinetochore. Cytoplasm, cytoskeleton, microtubule organizing center, centrosome. Note=Cytoplasmic in interphase cells. Associates with the kinetochores in early prophase. Kinetochore localization requires BUB1, PLK1 and KNL1

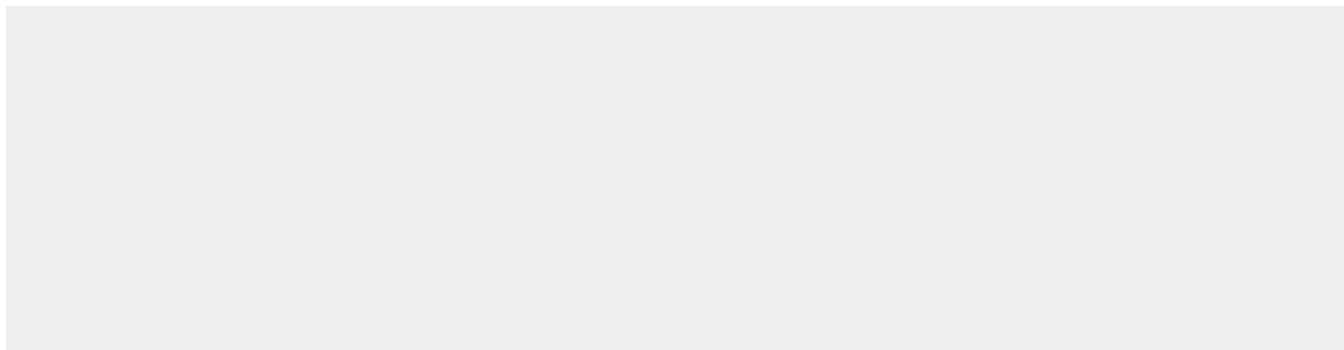
Tissue Location

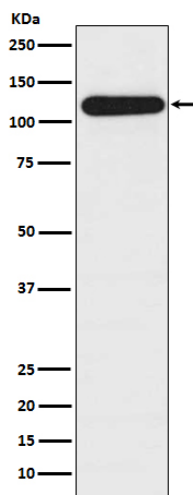
Highly expressed in thymus followed by spleen. Preferentially expressed in tissues with a high mitotic index

Anti-BubR1 BUB1B Rabbit Monoclonal Antibody - Protocols

Provided below are standard protocols that you may find useful for product applications.

- [Western Blot](#)
- [Blocking Peptides](#)
- [Dot Blot](#)
- [Immunohistochemistry](#)
- [Immunofluorescence](#)
- [Immunoprecipitation](#)
- [Flow Cytometry](#)
- [Cell Culture](#)

Anti-BubR1 BUB1B Rabbit Monoclonal Antibody - Images



Western blot analysis of BubR1 expression in HepG2 cell lysate.