

**Anti-MYH11 Rabbit Monoclonal Antibody**  
**Catalog # ABO13808****Specification**

---

**Anti-MYH11 Rabbit Monoclonal Antibody - Product Information**

Application	WB, IHC, IF, ICC
Primary Accession	<a href="#">P35749</a>
Host	Rabbit
Isotype	Rabbit IgG
Reactivity	Human
Clonality	Monoclonal
Format	Liquid

**Description**

Anti-MYH11 Rabbit Monoclonal Antibody . Tested in WB, IHC, ICC/IF applications. This antibody reacts with Human.

**Anti-MYH11 Rabbit Monoclonal Antibody - Additional Information**

**Gene ID** 4629

**Other Names**

Myosin-11, Myosin heavy chain 11, Myosin heavy chain, smooth muscle isoform, SMMHC, MYH11, KIAA0866

**Calculated MW**

227339 MW KDa

**Application Details**

WB 1:500-1:2000<br>IHC 1:50-1:200<br>ICC/IF 1:50-1:200

**Subcellular Localization**

Melanosome. Identified by mass spectrometry in melanosome fractions from stage I to stage IV. Thick filaments of the myofibrils.

**Tissue Specificity**

Smooth muscle; expressed in the umbilical artery, bladder, esophagus and trachea. Isoform 1 is mostly found in slowly contracting tonic muscles..

**Contents**

Rabbit IgG in phosphate buffered saline, pH 7.4, 150mM NaCl, 0.02% sodium azide and 50% glycerol, 0.4-0.5mg/ml BSA.

**Immunogen**

A synthesized peptide derived from human MYH11

**Purification**

Affinity-chromatography

Storage

**Store at -20°C for one year. For short term**

storage and frequent use, store at 4°C for up to one month. Avoid repeated freeze-thaw cycles.

## Anti-MYH11 Rabbit Monoclonal Antibody - Protein Information

**Name** MYH11

**Synonyms** KIAA0866

### Function

Muscle contraction.

### Cellular Location

Melanosome. Note=Identified by mass spectrometry in melanosome fractions from stage I to stage IV. Thick filaments of the myofibrils

### Tissue Location

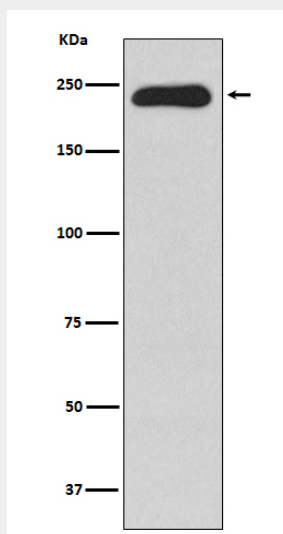
Smooth muscle; expressed in the umbilical artery, bladder, esophagus and trachea. Isoform 1 is mostly found in slowly contracting tonic muscles.

## Anti-MYH11 Rabbit Monoclonal Antibody - Protocols

Provided below are standard protocols that you may find useful for product applications.

- [Western Blot](#)
- [Blocking Peptides](#)
- [Dot Blot](#)
- [Immunohistochemistry](#)
- [Immunofluorescence](#)
- [Immunoprecipitation](#)
- [Flow Cytometry](#)
- [Cell Culture](#)

## Anti-MYH11 Rabbit Monoclonal Antibody - Images



Western blot analysis of MYH11 expression in Human testis lysate.