

Anti-HDAC11/Histone Deacetylase 11 Rabbit Monoclonal Antibody
Catalog # ABO13815**Specification****Anti-HDAC11/Histone Deacetylase 11 Rabbit Monoclonal Antibody - Product Information**

Application	WB, IP
Primary Accession	Q96DB2
Host	Rabbit
Isotype	Rabbit IgG
Reactivity	Human
Clonality	Monoclonal
Format	Liquid

Description

Anti-HDAC11/Histone Deacetylase 11 Rabbit Monoclonal Antibody . Tested in WB, IP applications.
This antibody reacts with Human.

Anti-HDAC11/Histone Deacetylase 11 Rabbit Monoclonal Antibody - Additional Information

Gene ID 79885

Other Names

Histone deacetylase 11, HD11, 3.5.1.98, HDAC11

Calculated MW

39183 MW KDa

Application Details

WB 1:1000-1:2000
IP 1:50

Subcellular Localization

Nucleus. Predominantly nuclear.

Tissue Specificity

Weakly expressed in most tissues. Strongly expressed in brain, heart, skeletal muscle, kidney and testis.

Contents

Rabbit IgG in phosphate buffered saline, pH 7.4, 150mM NaCl, 0.02% sodium azide and 50% glycerol, 0.4-0.5mg/ml BSA.

Immunogen

A synthesized peptide derived from human HDAC11

Purification

Affinity-chromatography

Storage

Store at -20°C for one year. For short term storage and frequent use, store at 4°C for

up to one month. Avoid repeated
freeze-thaw cycles.

Anti-HDAC11/Histone Deacetylase 11 Rabbit Monoclonal Antibody - Protein Information

Name HDAC11

Function

Responsible for the deacetylation of lysine residues on the N-terminal part of the core histones (H2A, H2B, H3 and H4). Histone deacetylation gives a tag for epigenetic repression and plays an important role in transcriptional regulation, cell cycle progression and developmental events. Histone deacetylases act via the formation of large multiprotein complexes.

Cellular Location

Nucleus.

Tissue Location

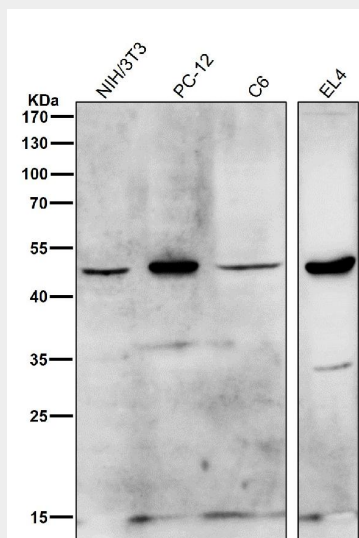
Weakly expressed in most tissues. Strongly expressed in brain, heart, skeletal muscle, kidney and testis

Anti-HDAC11/Histone Deacetylase 11 Rabbit Monoclonal Antibody - Protocols

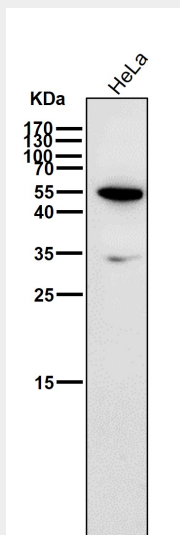
Provided below are standard protocols that you may find useful for product applications.

- [Western Blot](#)
- [Blocking Peptides](#)
- [Dot Blot](#)
- [Immunohistochemistry](#)
- [Immunofluorescence](#)
- [Immunoprecipitation](#)
- [Flow Cytometry](#)
- [Cell Culture](#)

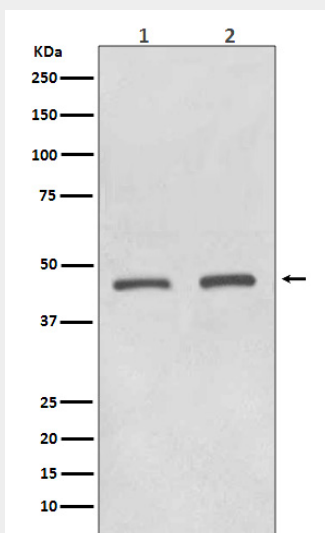
Anti-HDAC11/Histone Deacetylase 11 Rabbit Monoclonal Antibody - Images



All lanes use the Antibody at 1:2K dilution for 1 hour at room temperature.



All lanes use the Antibody at 1:2K dilution for 1 hour at room temperature.



Western blot analysis of HDAC11 expression in (1) Jurkat cell lysate; (2) MCF7 cell lysate.