

**Anti-STAT5a Rabbit Monoclonal Antibody**  
**Catalog # ABO13817****Specification**

---

**Anti-STAT5a Rabbit Monoclonal Antibody - Product Information**

Application	WB, IHC, IF, ICC, IP, FC
Primary Accession	<a href="#">P42229</a>
Host	Rabbit
Isotype	Rabbit IgG
Reactivity	Rat, Human, Mouse
Clonality	Monoclonal
Format	Liquid

**Description**

Anti-STAT5a Rabbit Monoclonal Antibody . Tested in WB, IHC, ICC/IF, IP, Flow Cytometry applications. This antibody reacts with Human, Mouse, Rat.

**Anti-STAT5a Rabbit Monoclonal Antibody - Additional Information**

**Gene ID** 6776

**Other Names**

Signal transducer and activator of transcription 5A, STAT5A, STAT5

**Calculated MW**

90647 MW KDa

**Application Details**

WB 1:500-1:2000<br>IHC 1:50-1:200<br>ICC/IF 1:50-1:200<br>IP 1:50<br>FC 1:50

**Subcellular Localization**

Cytoplasm. Nucleus. Translocated into the nucleus in response to phosphorylation.

**Contents**

Rabbit IgG in phosphate buffered saline, pH 7.4, 150mM NaCl, 0.02% sodium azide and 50% glycerol, 0.4-0.5mg/ml BSA.

**Immunogen**

A synthesized peptide derived from human STAT5a

**Purification**

Affinity-chromatography

Storage

**Store at -20°C for one year. For short term storage and frequent use, store at 4°C for up to one month. Avoid repeated freeze-thaw cycles.**

**Anti-STAT5a Rabbit Monoclonal Antibody - Protein Information**

**Name** STAT5A

**Synonyms** STAT5

**Function**

Carries out a dual function: signal transduction and activation of transcription. Mediates cellular responses to the cytokine KITLG/SCF and other growth factors. Mediates cellular responses to ERBB4. May mediate cellular responses to activated FGFR1, FGFR2, FGFR3 and FGFR4. Binds to the GAS element and activates PRL- induced transcription. Regulates the expression of milk proteins during lactation.

**Cellular Location**

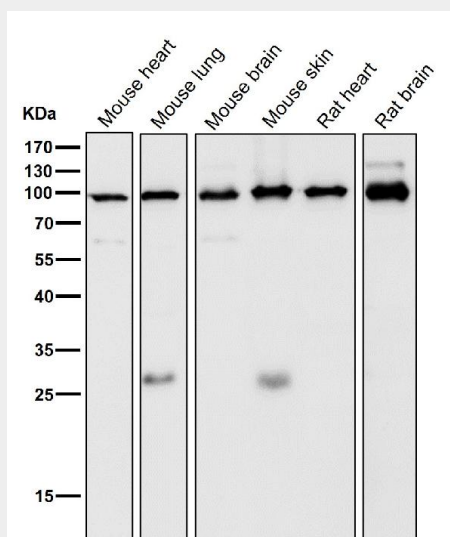
Cytoplasm. Nucleus. Note=Translocated into the nucleus in response to phosphorylation

**Anti-STAT5a Rabbit Monoclonal Antibody - Protocols**

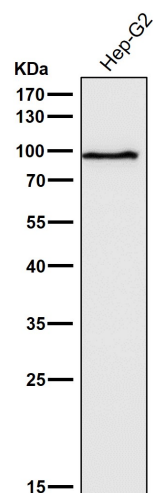
Provided below are standard protocols that you may find useful for product applications.

- [Western Blot](#)
- [Blocking Peptides](#)
- [Dot Blot](#)
- [Immunohistochemistry](#)
- [Immunofluorescence](#)
- [Immunoprecipitation](#)
- [Flow Cytometry](#)
- [Cell Culture](#)

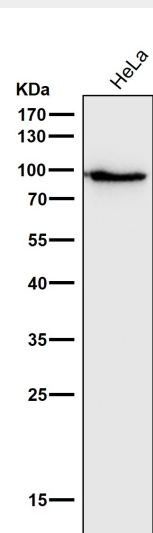
**Anti-STAT5a Rabbit Monoclonal Antibody - Images**



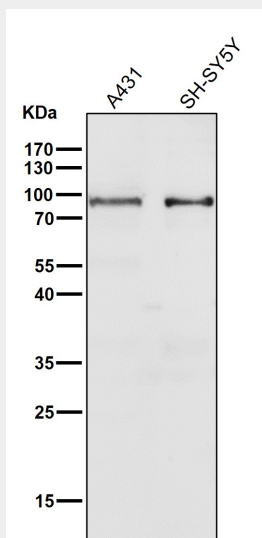
All lanes use the Antibody at 1:3K dilution for 1 hour at room temperature.



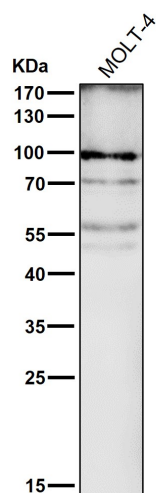
All lanes use the Antibody at 1:3K dilution for 1 hour at room temperature.



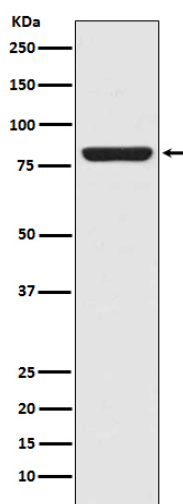
All lanes use the Antibody at 1:3K dilution for 1 hour at room temperature.



All lanes use the Antibody at 1:3K dilution for 1 hour at room temperature.



All lanes use the Antibody at 1:3K dilution for 1 hour at room temperature.



Western blot analysis of STAT5a in A431 cell lysate.