

**Anti-Desmin Rabbit Monoclonal Antibody**  
**Catalog # ABO13821****Specification**

---

**Anti-Desmin Rabbit Monoclonal Antibody - Product Information**

Application	WB, IHC, IF, ICC
Primary Accession	<a href="#">P17661</a>
Host	Rabbit
Isotype	Rabbit IgG
Reactivity	Rat, Human, Mouse
Clonality	Monoclonal
Format	Liquid

**Description**

Anti-Desmin Rabbit Monoclonal Antibody . Tested in WB, IHC, ICC/IF applications. This antibody reacts with Human, Mouse, Rat.

**Anti-Desmin Rabbit Monoclonal Antibody - Additional Information**

**Gene ID** 1674

**Other Names**

Desmin, DES

**Calculated MW**

53536 MW KDa

**Application Details**

WB 1:10000-1:20000<br>IHC 1:100-1:500<br>ICC/IF 1:50-1:100

**Subcellular Localization**

Cytoplasm. Cell membrane, sarcolemma.

**Contents**

Rabbit IgG in phosphate buffered saline, pH 7.4, 150mM NaCl, 0.02% sodium azide and 50% glycerol, 0.4-0.5mg/ml BSA.

**Immunogen**

A synthesized peptide derived from human Desmin

**Purification**

Affinity-chromatography

**Storage**

**Store at -20°C for one year. For short term storage and frequent use, store at 4°C for up to one month. Avoid repeated freeze-thaw cycles.**

**Anti-Desmin Rabbit Monoclonal Antibody - Protein Information**

**Name** DES**Function**

Muscle-specific type III intermediate filament essential for proper muscular structure and function. Plays a crucial role in maintaining the structure of sarcomeres, inter-connecting the Z-disks and forming the myofibrils, linking them not only to the sarcolemmal cytoskeleton, but also to the nucleus and mitochondria, thus providing strength for the muscle fiber during activity (PubMed:<a href="http://www.uniprot.org/citations/25358400" target="\_blank">25358400</a>). In adult striated muscle they form a fibrous network connecting myofibrils to each other and to the plasma membrane from the periphery of the Z- line structures (PubMed:<a href="http://www.uniprot.org/citations/24200904" target="\_blank">24200904</a>, PubMed:<a href="http://www.uniprot.org/citations/25394388" target="\_blank">25394388</a>, PubMed:<a href="http://www.uniprot.org/citations/26724190" target="\_blank">26724190</a>). May act as a sarcomeric microtubule-anchoring protein: specifically associates with detyrosinated tubulin-alpha chains, leading to buckled microtubules and mechanical resistance to contraction. Required for nuclear membrane integrity, via anchoring at the cell tip and nuclear envelope, resulting in maintenance of microtubule-derived intracellular mechanical forces (By similarity). Contributes to the transcriptional regulation of the NKX2-5 gene in cardiac progenitor cells during a short period of cardiomyogenesis and in cardiac side population stem cells in the adult. Plays a role in maintaining an optimal conformation of nebulin (NEB) on heart muscle sarcomeres to bind and recruit cardiac alpha-actin (By similarity).

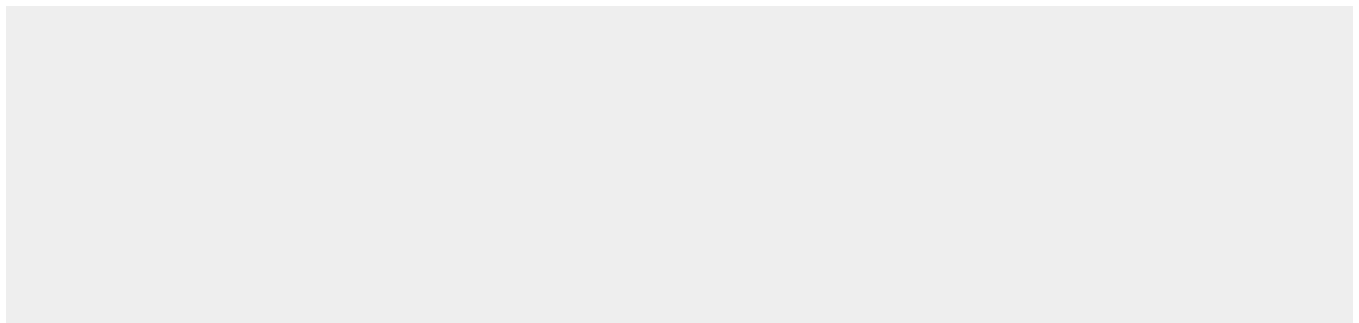
**Cellular Location**

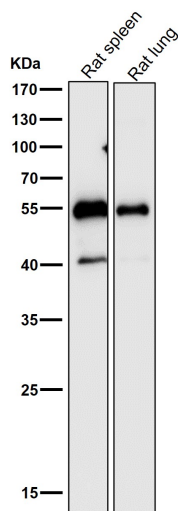
Cytoplasm, myofibril, sarcomere, Z line. Cytoplasm Cell membrane, sarcolemma. Nucleus {ECO:0000250|UniProtKB:P31001}. Cell tip {ECO:0000250|UniProtKB:P31001}. Nucleus envelope {ECO:0000250|UniProtKB:P31001}. Note=Localizes in the intercalated disks which occur at the Z line of cardiomyocytes (PubMed:24200904, PubMed:26724190). Localizes in the nucleus exclusively in differentiating cardiac progenitor cells and premature cardiomyocytes (By similarity). PKP2 is required for correct anchoring of DES at the cell tip and nuclear envelope (By similarity) {ECO:0000250|UniProtKB:P31001, ECO:0000269|PubMed:24200904, ECO:0000269|PubMed:26724190}

**Anti-Desmin Rabbit Monoclonal Antibody - Protocols**

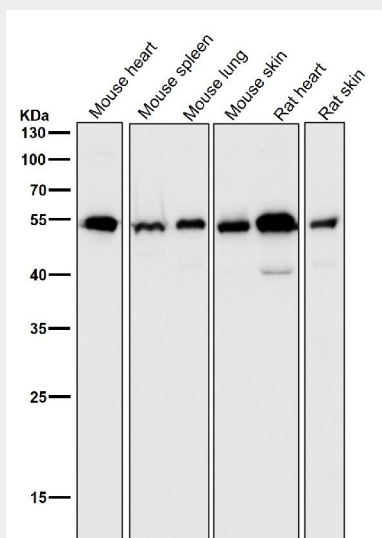
Provided below are standard protocols that you may find useful for product applications.

- [Western Blot](#)
- [Blocking Peptides](#)
- [Dot Blot](#)
- [Immunohistochemistry](#)
- [Immunofluorescence](#)
- [Immunoprecipitation](#)
- [Flow Cytometry](#)
- [Cell Culture](#)

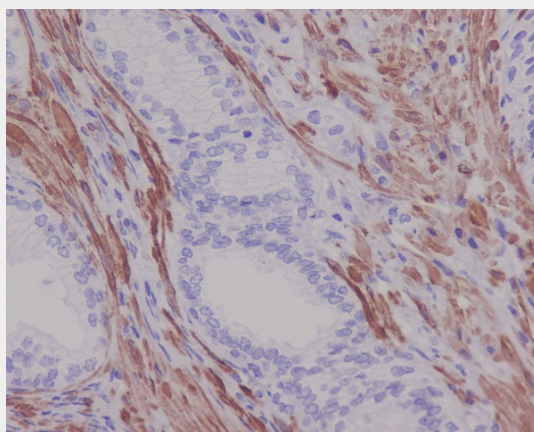
**Anti-Desmin Rabbit Monoclonal Antibody - Images**



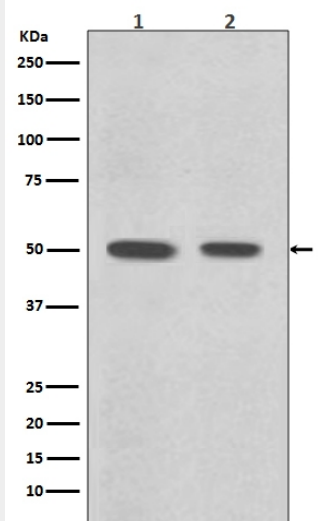
All lanes use the Antibody at 1:1W dilution for 1 hour at room temperature.



All lanes use the Antibody at 1:1W dilution for 1 hour at room temperature.



Immunohistochemical analysis of paraffin-embedded human prostate, using Desmin Antibody.



All lanes use the Antibody at 1:1W dilution for 1 hour at room temperature.