

Anti-Lin28B Rabbit Monoclonal Antibody
Catalog # ABO13832**Specification**

Anti-Lin28B Rabbit Monoclonal Antibody - Product Information

Application	WB, IF, ICC, IP, FC
Primary Accession	Q6ZN17
Host	Rabbit
Isotype	Rabbit IgG
Reactivity	Human
Clonality	Monoclonal
Format	Liquid

Description

Anti-Lin28B Rabbit Monoclonal Antibody . Tested in WB, ICC/IF, IP, Flow Cytometry applications. This antibody reacts with Human.

Anti-Lin28B Rabbit Monoclonal Antibody - Additional Information

Gene ID 389421

Other Names

Protein lin-28 homolog B, Lin-28B, LIN28B, CSDD2

Calculated MW

27084 MW KDa

Application Details

WB 1:500-1:2000
ICC/IF 1:100-1:500
IP 1:50
FC 1:100

Subcellular Localization

Nucleus. Nucleus, nucleolus. Cytoplasm. Predominantly nucleolar (PubMed:22118463). In Huh7 cells, predominantly cytoplasmic, with only a subset of cells exhibiting strong nuclear staining; however, the specificity of the polyclonal antibody used in these experiments has not been not documented (PubMed:16971064)..

Tissue Specificity

Expressed at high levels in the placenta and, at much lower, in testis and fetal liver (PubMed:16971064). Isoform 1 is only detected in placenta and in moderately and poorly differentiated hepatocellular carcinoma cells (at protein level). Isoform 2 is detected in fetal liver, non-tumor liver tissues, as well as well-differentiated tumor tissues (at protein level). Tends to be up-regulated in triple-negative (ER-,PR-,HER2-) breast tumors, as well as in liver, ovarian, and thyroid carcinomas (PubMed:22118463)..

Contents

Rabbit IgG in phosphate buffered saline, pH 7.4, 150mM NaCl, 0.02% sodium azide and 50% glycerol, 0.4-0.5mg/ml BSA.

Immunogen

A synthesized peptide derived from human Lin28B

Purification

Affinity-chromatography

Storage

Store at -20°C for one year. For short term storage and frequent use, store at 4°C for up to one month. Avoid repeated freeze-thaw cycles.

Anti-Lin28B Rabbit Monoclonal Antibody - Protein Information**Name** LIN28B**Synonyms** CSDD2**Function**

Suppressor of microRNA (miRNA) biogenesis, including that of let-7 and possibly of miR107, miR-143 and miR-200c. Binds primary let-7 transcripts (pri-let-7), including pri-let-7g and pri-let-7a-1, and sequester them in the nucleolus, away from the microprocessor complex, hence preventing their processing into mature miRNA (PubMed:22118463). Does not act on pri-miR21 (PubMed:22118463). The repression of let-7 expression is required for normal development and contributes to maintain the pluripotent state of embryonic stem cells by preventing let-7-mediated differentiation. When overexpressed, recruits ZCCHC11/TUT4 uridylyltransferase to pre-let-7 transcripts, leading to their terminal uridylation and degradation (PubMed:19703396). This activity might not be relevant in vivo, as LIN28B-mediated inhibition of let-7 miRNA maturation appears to be ZCCHC11-independent (PubMed:22118463). Interaction with target pre-miRNAs occurs via an 5'- GGAG-3' motif in the pre-miRNA terminal loop. Mediates MYC-induced let- 7 repression (By similarity). When overexpressed, isoform 1 stimulates growth of the breast adenocarcinoma cell line MCF-7. Isoform 2 has no effect on cell growth.

Cellular Location

Nucleus. Nucleus, nucleolus. Cytoplasm Note=Predominantly nucleolar (PubMed:22118463). In Huh7 cells, predominantly cytoplasmic, with only a subset of cells exhibiting strong nuclear staining; however, the specificity of the polyclonal antibody used in these experiments has not been not documented (PubMed:16971064).

Tissue Location

Expressed at high levels in the placenta and, at much lower, in testis and fetal liver (PubMed:16971064). Isoform 1 is only detected in placenta and in moderately and poorly differentiated hepatocellular carcinoma cells (at protein level). Isoform 2 is detected in fetal liver, non-tumor liver tissues, as well as well- differentiated tumor tissues (at protein level). Tends to be up- regulated in triple-negative (ER-,PR-,HER2-) breast tumors, as well as in liver, ovarian, and thyroid carcinomas (PubMed:22118463)

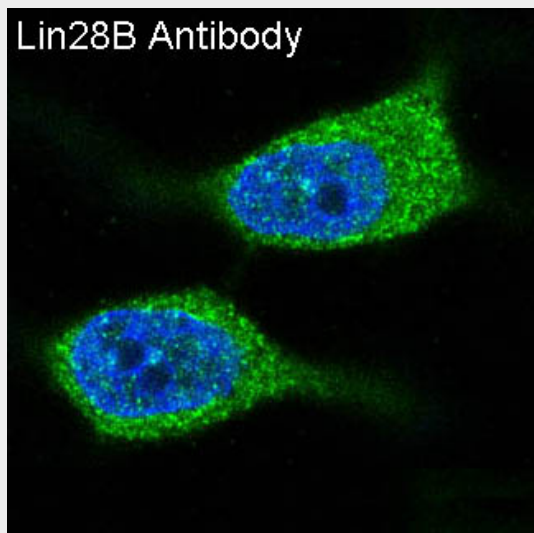
Anti-Lin28B Rabbit Monoclonal Antibody - Protocols

Provided below are standard protocols that you may find useful for product applications.

- [Western Blot](#)
- [Blocking Peptides](#)
- [Dot Blot](#)

- [Immunohistochemistry](#)
- [Immunofluorescence](#)
- [Immunoprecipitation](#)
- [Flow Cytometry](#)
- [Cell Culture](#)

Anti-Lin28B Rabbit Monoclonal Antibody - Images



Immunofluorescent analysis of MCF-7 cells, using Lin28B Antibody.