

Anti-BCL2A1/Bcl 2 Related Protein A1 Rabbit Monoclonal Antibody
Catalog # ABO13835**Specification****Anti-BCL2A1/Bcl 2 Related Protein A1 Rabbit Monoclonal Antibody - Product Information**

Application	WB, IHC, FC
Primary Accession	Q16548
Host	Rabbit
Isotype	Rabbit IgG
Reactivity	Rat, Human, Mouse
Clonality	Monoclonal
Format	Liquid

Description

Anti-BCL2A1/Bcl 2 Related Protein A1 Rabbit Monoclonal Antibody . Tested in WB, IHC, Flow Cytometry applications. This antibody reacts with Human, Mouse, Rat.

Anti-BCL2A1/Bcl 2 Related Protein A1 Rabbit Monoclonal Antibody - Additional Information

Gene ID 597

Other Names

Bcl-2-related protein A1, Bcl-2-like protein 5, Bcl2-L-5, Hemopoietic-specific early response protein, Protein BFL-1, Protein GRS, BCL2A1, BCL2L5, BFL1, GRS, HBPA1

Calculated MW

20132 MW KDa

Application Details

WB 1:500-1:2000
IHC 1:50-1:200
FC 1:100

Subcellular Localization

Cytoplasm.

Tissue Specificity

Seems to be restricted to the hematopoietic compartment. Expressed in peripheral blood, spleen, and bone marrow, at moderate levels in lung, small intestine and testis, at a minimal levels in other tissues. Also found in vascular smooth muscle cells and hematopoietic malignancies.

Contents

Rabbit IgG in phosphate buffered saline, pH 7.4, 150mM NaCl, 0.02% sodium azide and 50% glycerol, 0.4-0.5mg/ml BSA.

Immunogen

A synthesized peptide derived from human BCL2A1

Purification

Affinity-chromatography

Storage

Store at -20°C for one year. For short term storage and frequent use, store at 4°C for up to one month. Avoid repeated freeze-thaw cycles.

Anti-BCL2A1/Bcl 2 Related Protein A1 Rabbit Monoclonal Antibody - Protein Information

Name BCL2A1

Synonyms BCL2L5, BFL1, GRS, HBPA1

Function

Retards apoptosis induced by IL-3 deprivation. May function in the response of hemopoietic cells to external signals and in maintaining endothelial survival during infection (By similarity). Can inhibit apoptosis induced by serum starvation in the mammary epithelial cell line HC11 (By similarity).

Cellular Location

Cytoplasm.

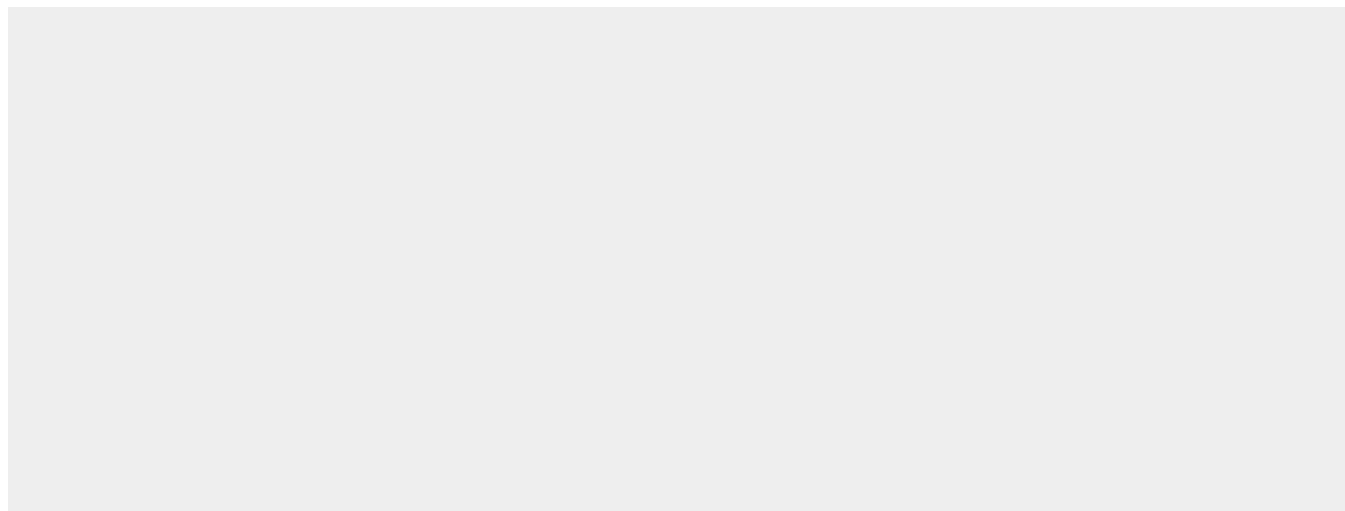
Tissue Location

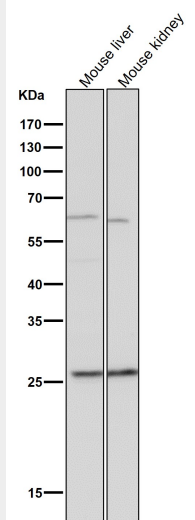
Seems to be restricted to the hematopoietic compartment. Expressed in peripheral blood, spleen, and bone marrow, at moderate levels in lung, small intestine and testis, at a minimal levels in other tissues. Also found in vascular smooth muscle cells and hematopoietic malignancies

Anti-BCL2A1/Bcl 2 Related Protein A1 Rabbit Monoclonal Antibody - Protocols

Provided below are standard protocols that you may find useful for product applications.

- [Western Blot](#)
- [Blocking Peptides](#)
- [Dot Blot](#)
- [Immunohistochemistry](#)
- [Immunofluorescence](#)
- [Immunoprecipitation](#)
- [Flow Cytometry](#)
- [Cell Culture](#)

Anti-BCL2A1/Bcl 2 Related Protein A1 Rabbit Monoclonal Antibody - Images



All lanes use the Antibody at 1:1K dilution for 1 hour at room temperature.

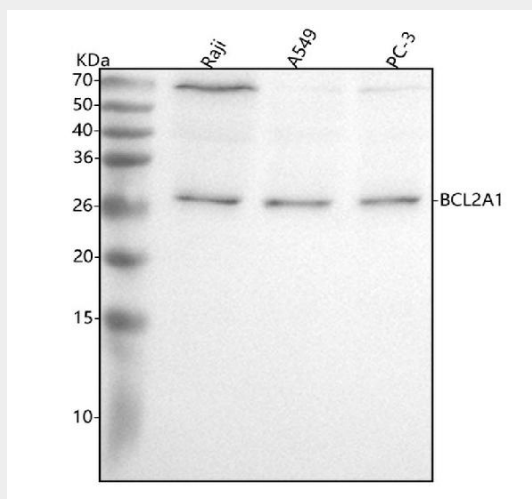


Figure 1. Western blot analysis of BCL2A1 using anti-BCL2A1 antibody (M03850).

Electrophoresis was performed on a 5-20% SDS-PAGE gel at 70V (Stacking gel) / 90V (Resolving gel) for 2-3 hours. The sample well of each lane was loaded with 30 ug of sample under reducing conditions.

Lane 1: human Raji whole cell lysates,

Lane 2: human A549 whole cell lysates,

Lane 3: human PC-3 whole cell lysates.

After electrophoresis, proteins were transferred to a nitrocellulose membrane at 150 mA for 50-90 minutes. Blocked the membrane with 5% non-fat milk/TBS for 1.5 hour at RT. The membrane was incubated with rabbit anti-BCL2A1 antigen affinity purified monoclonal antibody (Catalog # M03850) at 1:500 overnight at 4°C, then washed with TBS-0.1%Tween 3 times with 5 minutes each and probed with a goat anti-rabbit IgG-HRP secondary antibody at a dilution of 1:500 for 1.5 hour at RT. The signal is developed using an Enhanced Chemiluminescent detection (ECL) kit (Catalog # EK1002) with Tanon 5200 system. A specific band was detected for BCL2A1 at approximately 27 kDa. The expected band size for BCL2A1 is at 20 kDa.