

Anti-NOTCH4 Rabbit Monoclonal Antibody
Catalog # ABO13855**Specification**

Anti-NOTCH4 Rabbit Monoclonal Antibody - Product Information

| | |
|-------------------|------------------------|
| Application | WB, FC |
| Primary Accession | Q99466 |
| Host | Rabbit |
| Isotype | Rabbit IgG |
| Reactivity | Human, Mouse |
| Clonality | Monoclonal |
| Format | Liquid |

Description

Anti-NOTCH4 Rabbit Monoclonal Antibody . Tested in WB, Flow Cytometry applications. This antibody reacts with Human, Mouse.

Anti-NOTCH4 Rabbit Monoclonal Antibody - Additional Information

Gene ID 4855

Other Names

Neurogenic locus notch homolog protein 4, Notch 4, hNotch4, Notch 4 extracellular truncation, Notch 4 intracellular domain, NOTCH4 (http://www.genenames.org/cgi-bin/gene_symbol_report?hgnc_id=7884), INT3

Calculated MW

209622 MW KDa

Application Details

WB 1:100-1:500
FC 1:50

Subcellular Localization

Cell membrane; Single-pass type I membrane protein.

Tissue Specificity

Highly expressed in the heart, moderately in the lung and placenta and at low levels in the liver, skeletal muscle, kidney, pancreas, spleen, lymph node, thymus, bone marrow and fetal liver. No expression was seen in adult brain or peripheral blood leukocytes.

Contents

Rabbit IgG in phosphate buffered saline, pH 7.4, 150mM NaCl, 0.02% sodium azide and 50% glycerol, 0.4-0.5mg/ml BSA.

Immunogen

A synthesized peptide derived from human NOTCH4

Purification

Affinity-chromatography

Storage

Store at -20°C for one year. For short term storage and frequent use, store at 4°C for up to one month. Avoid repeated freeze-thaw cycles.

Anti-NOTCH4 Rabbit Monoclonal Antibody - Protein Information

Name NOTCH4 ([HGNC:7884](#))

Synonyms INT3

Function

Functions as a receptor for membrane-bound ligands Jagged1, Jagged2 and Delta1 to regulate cell-fate determination. Upon ligand activation through the released notch intracellular domain (NICD) it forms a transcriptional activator complex with RBPJ/RBPSUH and activates genes of the enhancer of split locus. Affects the implementation of differentiation, proliferation and apoptotic programs. May regulate branching morphogenesis in the developing vascular system (By similarity).

Cellular Location

Cell membrane; Single-pass type I membrane protein

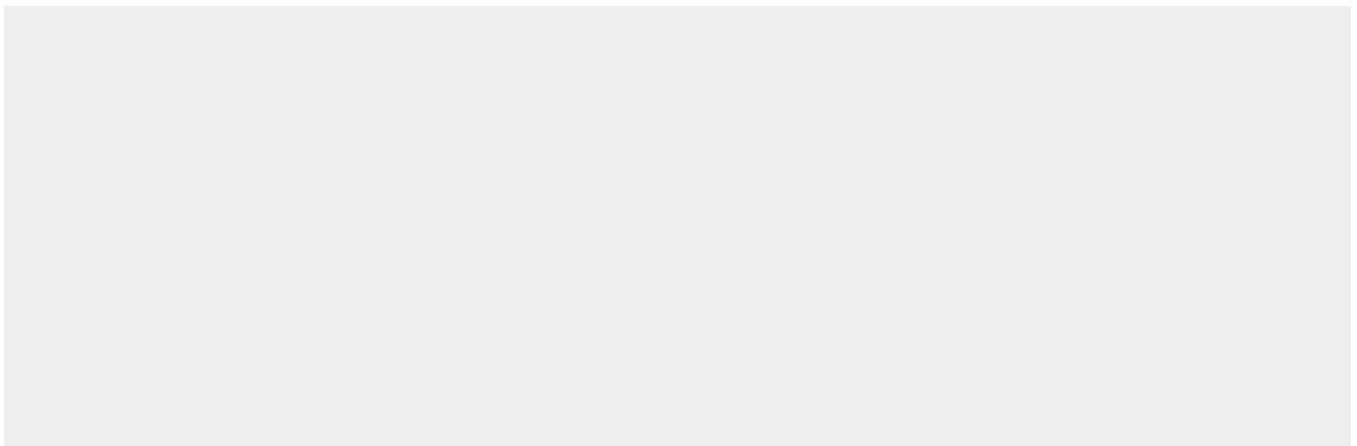
Tissue Location

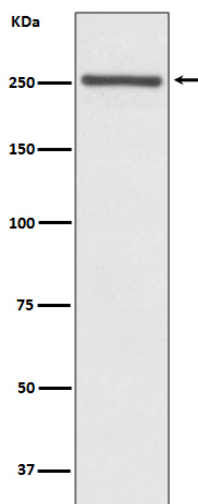
Highly expressed in the heart, moderately in the lung and placenta and at low levels in the liver, skeletal muscle, kidney, pancreas, spleen, lymph node, thymus, bone marrow and fetal liver. No expression was seen in adult brain or peripheral blood leukocytes

Anti-NOTCH4 Rabbit Monoclonal Antibody - Protocols

Provided below are standard protocols that you may find useful for product applications.

- [Western Blot](#)
- [Blocking Peptides](#)
- [Dot Blot](#)
- [Immunohistochemistry](#)
- [Immunofluorescence](#)
- [Immunoprecipitation](#)
- [Flow Cytometry](#)
- [Cell Culture](#)

Anti-NOTCH4 Rabbit Monoclonal Antibody - Images



Western blot analysis of NOTCH4 expression in Mouse lung lysate.