

Anti-Hsp105 Rabbit Monoclonal Antibody
Catalog # ABO13856**Specification**

Anti-Hsp105 Rabbit Monoclonal Antibody - Product Information

Application	WB, IHC, IF, ICC, IP
Primary Accession	Q92598
Host	Rabbit
Isotype	Rabbit IgG
Reactivity	Rat, Human, Mouse
Clonality	Monoclonal
Format	Liquid

Description

Anti-Hsp105 Rabbit Monoclonal Antibody . Tested in WB, IHC, ICC/IF, IP applications. This antibody reacts with Human, Mouse, Rat.

Anti-Hsp105 Rabbit Monoclonal Antibody - Additional Information

Gene ID 10808

Other Names

Heat shock protein 105 kDa, Antigen NY-CO-25, Heat shock 110 kDa protein, Heat shock protein family H member 1, HSPH1, HSP105, HSP110, KIAA0201

Calculated MW

96865 MW KDa

Application Details

WB 1:500-1:2000
IHC 1:50-1:200
ICC/IF 1:50-1:200
IP 1:50

Subcellular Localization

Cytoplasm.

Tissue Specificity

Highly expressed in testis. Present at lower levels in most brain regions, except cerebellum. Overexpressed in cancer cells..

Contents

Rabbit IgG in phosphate buffered saline, pH 7.4, 150mM NaCl, 0.02% sodium azide and 50% glycerol, 0.4-0.5mg/ml BSA.

Immunogen

A synthesized peptide derived from human Hsp105

Purification

Affinity-chromatography

Storage

Store at -20°C for one year. For short term storage and frequent use, store at 4°C for

up to one month. Avoid repeated
freeze-thaw cycles.

Anti-Hsp105 Rabbit Monoclonal Antibody - Protein Information

Name HSPH1

Synonyms HSP105, HSP110, KIAA0201

Function

Acts as a nucleotide-exchange factor (NEF) for chaperone proteins HSPA1A and HSPA1B, promoting the release of ADP from HSPA1A/B thereby triggering client/substrate protein release (PubMed:24318877). Prevents the aggregation of denatured proteins in cells under severe stress, on which the ATP levels decrease markedly. Inhibits HSPA8/HSC70 ATPase and chaperone activities (By similarity).

Cellular Location

Cytoplasm.

Tissue Location

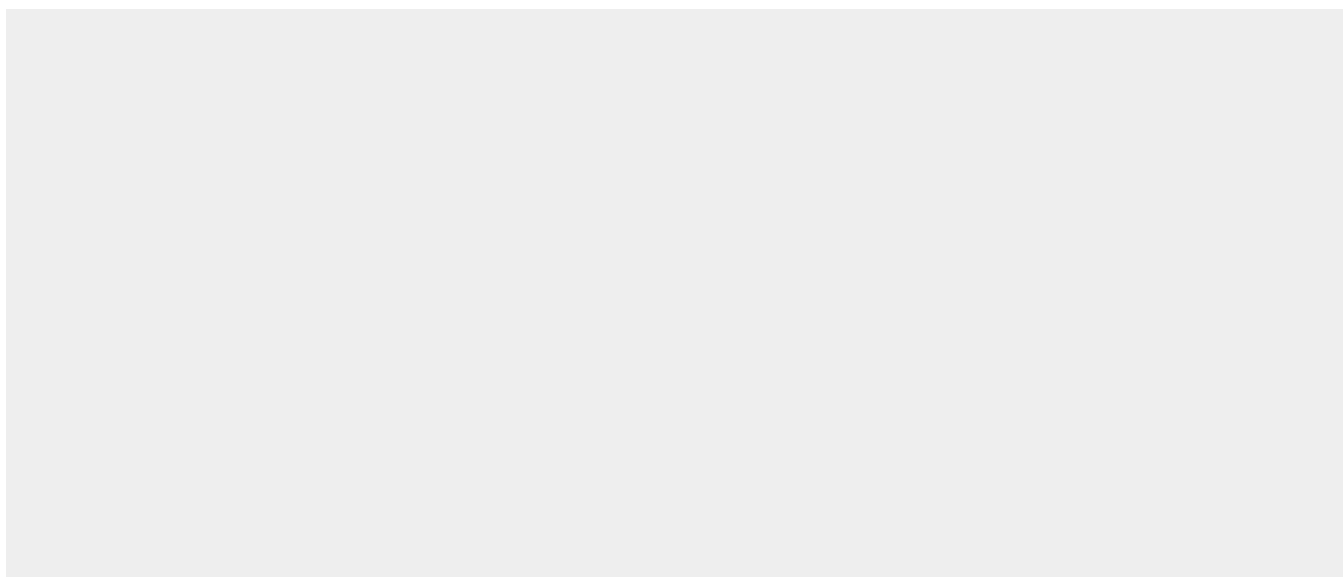
Highly expressed in testis. Present at lower levels in most brain regions, except cerebellum. Overexpressed in cancer cells.

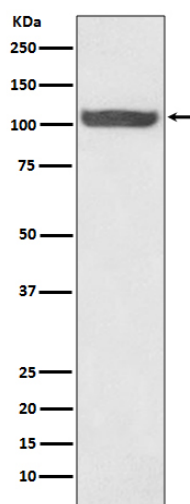
Anti-Hsp105 Rabbit Monoclonal Antibody - Protocols

Provided below are standard protocols that you may find useful for product applications.

- [Western Blot](#)
- [Blocking Peptides](#)
- [Dot Blot](#)
- [Immunohistochemistry](#)
- [Immunofluorescence](#)
- [Immunoprecipitation](#)
- [Flow Cytometry](#)
- [Cell Culture](#)

Anti-Hsp105 Rabbit Monoclonal Antibody - Images





Western blot analysis of Hsp105 expression in HeLa cell lysate.