

Anti-mGluR2 GRM2 Rabbit Monoclonal Antibody
Catalog # ABO13859**Specification****Anti-mGluR2 GRM2 Rabbit Monoclonal Antibody - Product Information**

Application	WB, IHC, IF, ICC
Primary Accession	Q14416
Host	Rabbit
Isotype	Rabbit IgG
Reactivity	Rat, Human, Mouse
Clonality	Monoclonal
Format	Liquid

Description

Anti-mGluR2 GRM2 Rabbit Monoclonal Antibody . Tested in WB, IHC, ICC/IF applications. This antibody reacts with Human, Mouse, Rat.

Anti-mGluR2 GRM2 Rabbit Monoclonal Antibody - Additional Information

Gene ID 2912

Other Names

Metabotropic glutamate receptor 2, mGluR2, GRM2 (http://www.genenames.org/cgi-bin/gene_symbol_report?hgnc_id=4594), GPRC1B, MGLUR2

Calculated MW

95568 MW KDa

Application Details

WB 1:5000-1:10000
IHC 1:50-1:200
ICC/IF 1:50-1:200

Subcellular Localization

Cell membrane; Multi-pass membrane protein. Cell junction, synapse. Cell projection, dendrite.

Tissue Specificity

Detected in brain cortex (at protein level). Widely expressed in different regions of the adult brain as well as in fetal brain..

Contents

Rabbit IgG in phosphate buffered saline, pH 7.4, 150mM NaCl, 0.02% sodium azide and 50% glycerol, 0.4-0.5mg/ml BSA.

Immunogen

A synthesized peptide derived from human mGluR2

Purification

Affinity-chromatography

Storage

Store at -20°C for one year. For short term

storage and frequent use, store at 4°C for up to one month. Avoid repeated freeze-thaw cycles.

Anti-mGluR2 GRM2 Rabbit Monoclonal Antibody - Protein Information

Name GRM2 ([HGNC:4594](#))

Synonyms GPRC1B, MGLUR2

Function

Dimeric G protein-coupled receptor which is activated by the excitatory neurotransmitter L-glutamate (PubMed:37286794). Plays critical roles in modulating synaptic transmission and neuronal excitability. Upon activation by glutamate, inhibits presynaptic calcium channels, reducing further glutamate release and dampening excitatory signaling (By similarity). Mechanistically, ligand binding causes a conformation change that triggers signaling via guanine nucleotide-binding proteins (G proteins) and modulates the activity of down-stream effectors, such as adenylate cyclase. May mediate suppression of neurotransmission or may be involved in synaptogenesis or synaptic stabilization.

Cellular Location

Cell membrane; Multi-pass membrane protein. Synapse. Cell projection, dendrite

Tissue Location

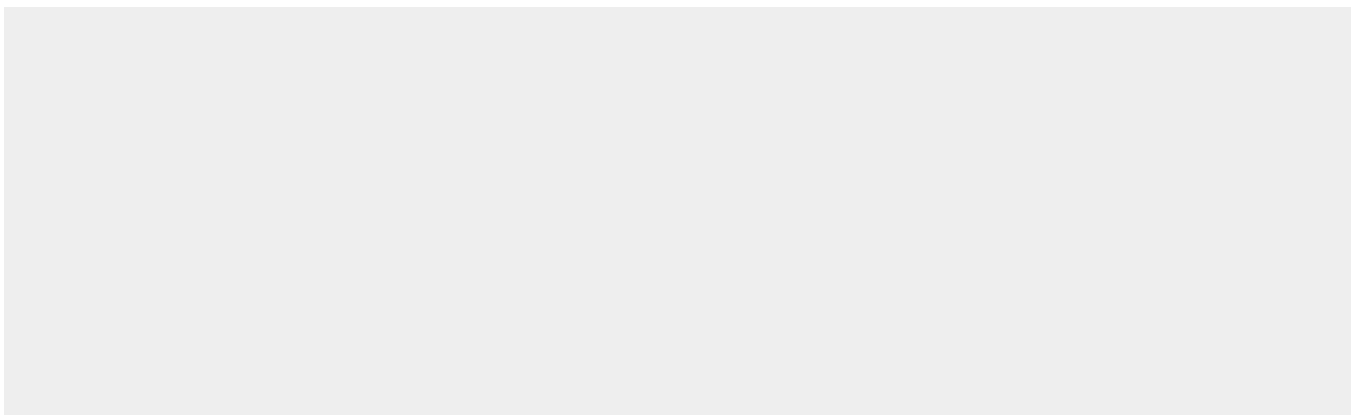
Detected in brain cortex (at protein level). Widely expressed in different regions of the adult brain as well as in fetal brain.

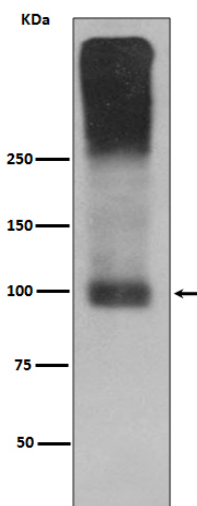
Anti-mGluR2 GRM2 Rabbit Monoclonal Antibody - Protocols

Provided below are standard protocols that you may find useful for product applications.

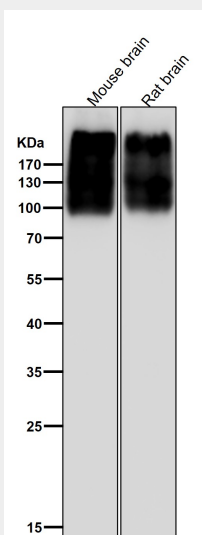
- [Western Blot](#)
- [Blocking Peptides](#)
- [Dot Blot](#)
- [Immunohistochemistry](#)
- [Immunofluorescence](#)
- [Immunoprecipitation](#)
- [Flow Cytometry](#)
- [Cell Culture](#)

Anti-mGluR2 GRM2 Rabbit Monoclonal Antibody - Images





Western blot analysis of mGluR2 expression in Mouse brain lysate.



All lanes use the Antibody at 1:1W dilution for 1 hour at room temperature.