

Anti-BNIP3L/Nix Rabbit Monoclonal Antibody
Catalog # ABO13880**Specification****Anti-BNIP3L/Nix Rabbit Monoclonal Antibody - Product Information**

Application	WB, IHC
Primary Accession	O60238
Host	Rabbit
Isotype	Rabbit IgG
Reactivity	Rat, Human, Mouse
Clonality	Monoclonal
Format	Liquid

Description

Anti-BNIP3L/Nix Rabbit Monoclonal Antibody . Tested in WB, IHC applications. This antibody reacts with Human, Mouse, Rat.

Anti-BNIP3L/Nix Rabbit Monoclonal Antibody - Additional Information

Gene ID 665

Other Names

BCL2/adenovirus E1B 19 kDa protein-interacting protein 3-like, Adenovirus E1B19K-binding protein B5, BCL2/adenovirus E1B 19 kDa protein-interacting protein 3A, NIP3-like protein X, NIP3L, BNIP3L, BNIP3A, BNIP3H, NIX

Calculated MW

23930 MW KDa

Application Details

WB 1:500-1:2000
IHC 1:50-1:200

Subcellular Localization

Nucleus envelope. Endoplasmic reticulum. Mitochondrion outer membrane. Membrane ; Single-pass membrane protein. Colocalizes with SPATA18 at the mitochondrion outer membrane.

Contents

Rabbit IgG in phosphate buffered saline, pH 7.4, 150mM NaCl, 0.02% sodium azide and 50% glycerol, 0.4-0.5mg/ml BSA.

Immunogen

A synthesized peptide derived from human BNIP3L

Purification

Affinity-chromatography

Storage

Store at -20°C for one year. For short term storage and frequent use, store at 4°C for up to one month. Avoid repeated freeze-thaw cycles.

Anti-BNIP3L/Nix Rabbit Monoclonal Antibody - Protein Information

Name BNIP3L

Synonyms BNIP3A, BNIP3H, NIX

Function

Induces apoptosis. Interacts with viral and cellular anti- apoptosis proteins. Can overcome the suppressors BCL-2 and BCL-XL, although high levels of BCL-XL expression will inhibit apoptosis. Inhibits apoptosis induced by BNIP3. Involved in mitochondrial quality control via its interaction with SPATA18/MIEAP: in response to mitochondrial damage, participates in mitochondrial protein catabolic process (also named MALM) leading to the degradation of damaged proteins inside mitochondria. The physical interaction of SPATA18/MIEAP, BNIP3 and BNIP3L/NIX at the mitochondrial outer membrane regulates the opening of a pore in the mitochondrial double membrane in order to mediate the translocation of lysosomal proteins from the cytoplasm to the mitochondrial matrix. May function as a tumor suppressor.

Cellular Location

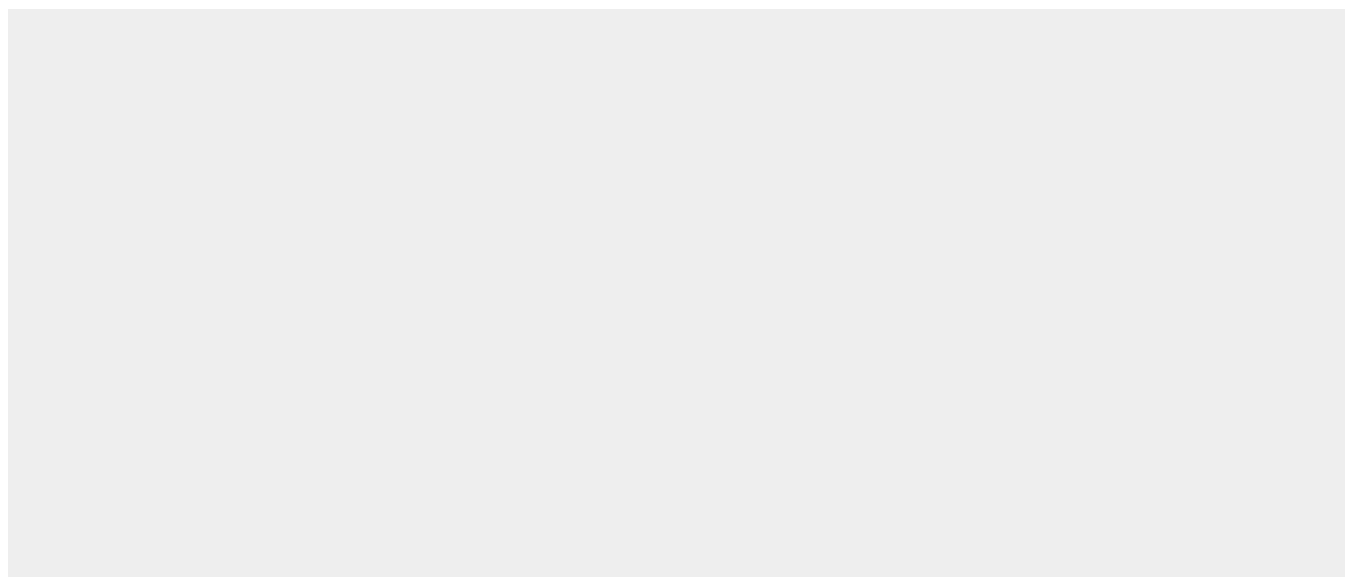
Nucleus envelope. Endoplasmic reticulum. Mitochondrion outer membrane. Membrane; Single-pass membrane protein. Note=Colocalizes with SPATA18 at the mitochondrion outer membrane

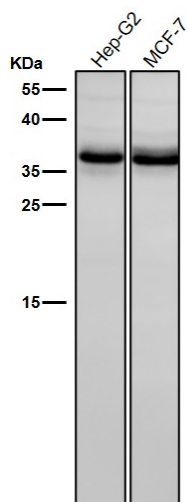
Anti-BNIP3L/Nix Rabbit Monoclonal Antibody - Protocols

Provided below are standard protocols that you may find useful for product applications.

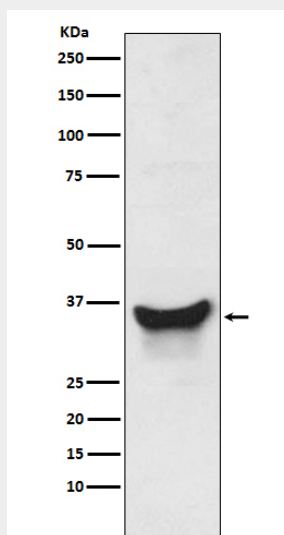
- [Western Blot](#)
- [Blocking Peptides](#)
- [Dot Blot](#)
- [Immunohistochemistry](#)
- [Immunofluorescence](#)
- [Immunoprecipitation](#)
- [Flow Cytometry](#)
- [Cell Culture](#)

Anti-BNIP3L/Nix Rabbit Monoclonal Antibody - Images





All lanes use the Antibody at 1:3K dilution for 1 hour at room temperature.



Western blot analysis of BNIP3L expression in K562 cell lysate.