

**Anti-Plectin Rabbit Monoclonal Antibody**  
**Catalog # ABO13883****Specification**

---

**Anti-Plectin Rabbit Monoclonal Antibody - Product Information**

Application	WB, IHC, IP
Primary Accession	<a href="#">Q15149</a>
Host	Rabbit
Isotype	Rabbit IgG
Reactivity	Rat, Human, Mouse
Clonality	Monoclonal
Format	Liquid

**Description**

Anti-Plectin Rabbit Monoclonal Antibody . Tested in WB, IHC, IP applications. This antibody reacts with Human, Mouse, Rat.

**Anti-Plectin Rabbit Monoclonal Antibody - Additional Information**

**Gene ID** 5339

**Other Names**

Plectin, PCN, PLTN, Hemidesmosomal protein 1, HD1, Plectin-1, PLEC, PLEC1

**Calculated MW**

531791 MW KDa

**Application Details**

WB 1:1000-1:2000<br>IHC 1:50-1:100<br>IP 1:30

**Subcellular Localization**

Cytoplasm, cytoskeleton. Cell junction, hemidesmosome.

**Tissue Specificity**

Widely expressed with highest levels in muscle, heart, placenta and spinal cord.

**Contents**

Rabbit IgG in phosphate buffered saline, pH 7.4, 150mM NaCl, 0.02% sodium azide and 50% glycerol, 0.4-0.5mg/ml BSA.

**Immunogen**

A synthesized peptide derived from human Plectin

**Purification**

Affinity-chromatography

**Storage**

**Store at -20°C for one year. For short term storage and frequent use, store at 4°C for up to one month. Avoid repeated freeze-thaw cycles.**

## Anti-Plectin Rabbit Monoclonal Antibody - Protein Information

**Name** PLEC

**Synonyms** PLEC1

### Function

Interlinks intermediate filaments with microtubules and microfilaments and anchors intermediate filaments to desmosomes or hemidesmosomes. Could also bind muscle proteins such as actin to membrane complexes in muscle. May be involved not only in the filaments network, but also in the regulation of their dynamics. Structural component of muscle. Isoform 9 plays a major role in the maintenance of myofiber integrity.

### Cellular Location

Cytoplasm, cytoskeleton. Cell junction, hemidesmosome. Cell projection, podosome  
{ECO:0000250|UniProtKB:Q9QXS1}. Note=Localized to the cortex of myotube podosomes.  
{ECO:0000250|UniProtKB:Q9QXS1}

### Tissue Location

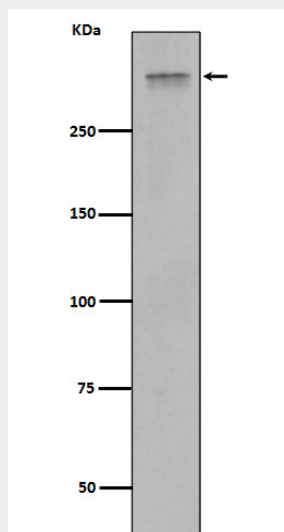
Widely expressed with highest levels in muscle, heart, placenta and spinal cord

## Anti-Plectin Rabbit Monoclonal Antibody - Protocols

Provided below are standard protocols that you may find useful for product applications.

- [Western Blot](#)
- [Blocking Peptides](#)
- [Dot Blot](#)
- [Immunohistochemistry](#)
- [Immunofluorescence](#)
- [Immunoprecipitation](#)
- [Flow Cytometry](#)
- [Cell Culture](#)

## Anti-Plectin Rabbit Monoclonal Antibody - Images



Western blot analysis of Plectin expression in Jurkat cell lysate.