

Anti-Insulin Rabbit Monoclonal Antibody
Catalog # ABO13890**Specification**

Anti-Insulin Rabbit Monoclonal Antibody - Product Information

Application	IHC, IF, ICC
Primary Accession	P01308
Host	Rabbit
Isotype	Rabbit IgG
Reactivity	Rat, Human, Mouse
Clonality	Monoclonal
Format	Liquid

Description

Anti-Insulin Rabbit Monoclonal Antibody . Tested in IHC, ICC/IF applications. This antibody reacts with Human, Mouse, Rat.

Anti-Insulin Rabbit Monoclonal Antibody - Additional Information

Gene ID 3630

Other Names

Insulin, Insulin B chain, Insulin A chain, INS

Calculated MW

11981 MW KDa

Application Details

IHC 1:500-1:1000
ICC/IF 1:50-1:200

Subcellular Localization

Secreted.

Contents

Rabbit IgG in phosphate buffered saline, pH 7.4, 150mM NaCl, 0.02% sodium azide and 50% glycerol, 0.4-0.5mg/ml BSA.

Immunogen

A synthesized peptide derived from human Insulin

Purification

Affinity-chromatography

Storage

Store at -20°C for one year. For short term storage and frequent use, store at 4°C for up to one month. Avoid repeated freeze-thaw cycles.

Anti-Insulin Rabbit Monoclonal Antibody - Protein Information

Name INS

Function

Insulin decreases blood glucose concentration. It increases cell permeability to monosaccharides, amino acids and fatty acids. It accelerates glycolysis, the pentose phosphate cycle, and glycogen synthesis in liver.

Cellular Location

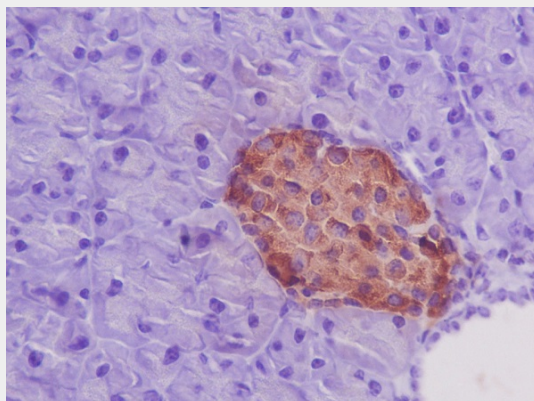
Secreted.

Anti-Insulin Rabbit Monoclonal Antibody - Protocols

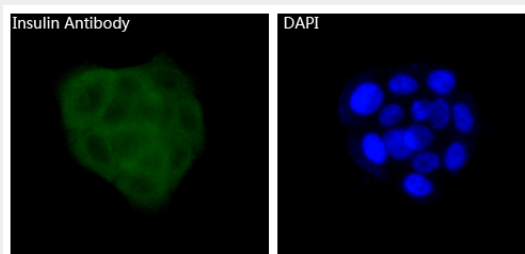
Provided below are standard protocols that you may find useful for product applications.

- [Western Blot](#)
- [Blocking Peptides](#)
- [Dot Blot](#)
- [Immunohistochemistry](#)
- [Immunofluorescence](#)
- [Immunoprecipitation](#)
- [Flow Cytometry](#)
- [Cell Culture](#)

Anti-Insulin Rabbit Monoclonal Antibody - Images



Immunohistochemical analysis of paraffin-embedded mouse pancreas, using Insulin Antibody.



Immunofluorescent analysis of BxPC-3 cells, using Insulin Antibody.