

Anti-S100A10 Rabbit Monoclonal Antibody
Catalog # ABO13903**Specification**

Anti-S100A10 Rabbit Monoclonal Antibody - Product Information

Application	WB, IHC
Primary Accession	P60903
Host	Rabbit
Isotype	Rabbit IgG
Reactivity	Human, Mouse
Clonality	Monoclonal
Format	Liquid

Description

Anti-S100A10 Rabbit Monoclonal Antibody . Tested in WB, IHC applications. This antibody reacts with Human, Mouse.

Anti-S100A10 Rabbit Monoclonal Antibody - Additional Information

Gene ID 6281

Other Names

Protein S100-A10, Calpactin I light chain, Calpactin-1 light chain, Cellular ligand of annexin II, S100 calcium-binding protein A10, p10 protein, p11, S100A10, ANX2LG, CAL1L, CLP11

Calculated MW

11203 MW KDa

Application Details

WB 1:500-1:2000
IHC 1:100-1:500

Contents

Rabbit IgG in phosphate buffered saline, pH 7.4, 150mM NaCl, 0.02% sodium azide and 50% glycerol, 0.4-0.5mg/ml BSA.

Immunogen

A synthesized peptide derived from human S100A10

Purification

Affinity-chromatography

Storage

Store at -20°C for one year. For short term storage and frequent use, store at 4°C for up to one month. Avoid repeated freeze-thaw cycles.

Anti-S100A10 Rabbit Monoclonal Antibody - Protein Information

Name S100A10

Synonyms ANX2LG, CAL1L, CLP11

Function

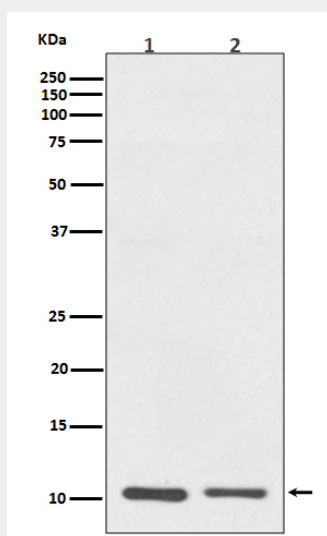
Because S100A10 induces the dimerization of ANXA2/p36, it may function as a regulator of protein phosphorylation in that the ANXA2 monomer is the preferred target (in vitro) of tyrosine-specific kinase.

Anti-S100A10 Rabbit Monoclonal Antibody - Protocols

Provided below are standard protocols that you may find useful for product applications.

- [Western Blot](#)
- [Blocking Peptides](#)
- [Dot Blot](#)
- [Immunohistochemistry](#)
- [Immunofluorescence](#)
- [Immunoprecipitation](#)
- [Flow Cytometry](#)
- [Cell Culture](#)

Anti-S100A10 Rabbit Monoclonal Antibody - Images



Western blot analysis of S100A10 expression in (1) A431 cell lysate; (2) RAW264.7 cell lysate.