

**Anti-IL1 beta Rabbit Monoclonal Antibody**  
**Catalog # ABO13918****Specification****Anti-IL1 beta Rabbit Monoclonal Antibody - Product Information**

Application	WB
Primary Accession	<a href="#">P01584</a>
Host	Rabbit
Isotype	Rabbit IgG
Reactivity	Human
Clonality	Monoclonal
Format	Liquid

**Description**

Anti-IL1 beta Rabbit Monoclonal Antibody . Tested in WB application. This antibody reacts with Human.

**Anti-IL1 beta Rabbit Monoclonal Antibody - Additional Information**

**Gene ID** 3553

**Other Names**

Interleukin-1 beta, IL-1 beta, Catabolin, IL1B (<a href="http://www.genenames.org/cgi-bin/gene\_symbol\_report?hgnc\_id=5992" target="\_blank">HGNC:5992</a>), IL1F2

**Calculated MW**

30748 MW KDa

**Application Details**

WB 1:500-1:2000

**Subcellular Localization**

Secreted. The lack of a specific hydrophobic segment in the precursor sequence suggests that IL-1 is released by damaged cells or is secreted by a mechanism differing from that used for other secretory proteins.

**Contents**

Rabbit IgG in phosphate buffered saline, pH 7.4, 150mM NaCl, 0.02% sodium azide and 50% glycerol, 0.4-0.5mg/ml BSA.

**Immunogen**

A synthesized peptide derived from human IL1 beta

**Purification**

Affinity-chromatography

**Storage**

**Store at -20°C for one year. For short term storage and frequent use, store at 4°C for up to one month. Avoid repeated**

## freeze-thaw cycles.

### Anti-IL1 beta Rabbit Monoclonal Antibody - Protein Information

**Name** IL1B ([HGNC:5992](#))

**Synonyms** IL1F2

#### Function

Potent pro-inflammatory cytokine (PubMed:[10653850](http://www.uniprot.org/citations/10653850), PubMed:[12794819](http://www.uniprot.org/citations/12794819), PubMed:[28331908](http://www.uniprot.org/citations/28331908), PubMed:[3920526](http://www.uniprot.org/citations/3920526)). Initially discovered as the major endogenous pyrogen, induces prostaglandin synthesis, neutrophil influx and activation, T-cell activation and cytokine production, B-cell activation and antibody production, and fibroblast proliferation and collagen production (PubMed:[3920526](http://www.uniprot.org/citations/3920526)). Promotes Th17 differentiation of T-cells. Synergizes with IL12/interleukin-12 to induce IFNG synthesis from T-helper 1 (Th1) cells (PubMed:[10653850](http://www.uniprot.org/citations/10653850)). Plays a role in angiogenesis by inducing VEGF production synergistically with TNF and IL6 (PubMed:[12794819](http://www.uniprot.org/citations/12794819)). Involved in transduction of inflammation downstream of pyroptosis: its mature form is specifically released in the extracellular milieu by passing through the gasdermin-D (GSDMD) pore (PubMed:[33377178](http://www.uniprot.org/citations/33377178), PubMed:[33883744](http://www.uniprot.org/citations/33883744)). Acts as a sensor of S.pyogenes infection in skin: cleaved and activated by pyogenes SpeB protease, leading to an inflammatory response that prevents bacterial growth during invasive skin infection (PubMed:[28331908](http://www.uniprot.org/citations/28331908)).

#### Cellular Location

Cytoplasm, cytosol. Secreted. Lysosome Secreted, extracellular exosome {ECO:0000250|UniProtKB:P10749} Note=The precursor is cytosolic (PubMed:15192144). In response to inflammasome-activating signals, such as ATP for NLRP3 inflammasome or bacterial flagellin for NLRC4 inflammasome, cleaved and secreted (PubMed:24201029, PubMed:33377178, PubMed:33883744). Mature form is secreted and released in the extracellular milieu by passing through the gasdermin-D (GSDMD) pore (PubMed:33883744). In contrast, the precursor form is not released, due to the presence of an acidic region that is proteolytically removed by CASP1 during maturation (PubMed:33883744). The secretion is dependent on protein unfolding and facilitated by the cargo receptor TMED10 (PubMed:32272059)

#### Tissue Location

Expressed in activated monocytes/macrophages (at protein level).

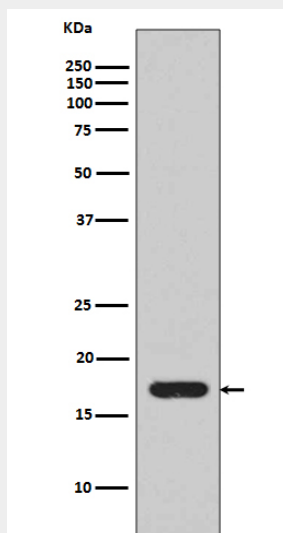
### Anti-IL1 beta Rabbit Monoclonal Antibody - Protocols

Provided below are standard protocols that you may find useful for product applications.

- [Western Blot](#)
- [Blocking Peptides](#)
- [Dot Blot](#)
- [Immunohistochemistry](#)
- [Immunofluorescence](#)
- [Immunoprecipitation](#)

- [Flow Cytometry](#)
- [Cell Culture](#)

### Anti-IL1 beta Rabbit Monoclonal Antibody - Images



Western blot analysis of extracts from recombinant IL1 beta, using IL1 beta antibody.