

Anti-IKB beta Rabbit Monoclonal Antibody
Catalog # ABO13929**Specification**

Anti-IKB beta Rabbit Monoclonal Antibody - Product Information

Application	WB, IHC, IF, ICC, IP
Primary Accession	Q15653
Host	Rabbit
Isotype	Rabbit IgG
Reactivity	Human
Clonality	Monoclonal
Format	Liquid

Description

Anti-IKB beta Rabbit Monoclonal Antibody . Tested in WB, IHC, ICC/IF, IP applications. This antibody reacts with Human.

Anti-IKB beta Rabbit Monoclonal Antibody - Additional Information

Gene ID 4793

Other Names

NF-kappa-B inhibitor beta, NF-kappa-BIB, I-kappa-B-beta, Ikb-B, Ikb-beta, IkappaBbeta, Thyroid receptor-interacting protein 9, TR-interacting protein 9, TRIP-9, NFKBIB, IKBB, TRIP9

Calculated MW

37771 MW KDa

Application Details

WB 1:500-1:2000
IHC 1:50-1:200
ICC/IF 1:50-1:200
IP 1:50

Subcellular Localization

Cytoplasm. Nucleus.

Tissue Specificity

Expressed in all tissues examined.

Contents

Rabbit IgG in phosphate buffered saline, pH 7.4, 150mM NaCl, 0.02% sodium azide and 50% glycerol, 0.4-0.5mg/ml BSA.

Immunogen

A synthesized peptide derived from human IKB beta

Purification

Affinity-chromatography

Storage

Store at -20°C for one year. For short term storage and frequent use, store at 4°C for up to one month. Avoid repeated

freeze-thaw cycles.

Anti-IKB beta Rabbit Monoclonal Antibody - Protein Information

Name NFKBIB

Synonyms IKBB, TRIP9

Function

Inhibits NF-kappa-B by complexing with and trapping it in the cytoplasm. However, the unphosphorylated form resynthesized after cell stimulation is able to bind NF-kappa-B allowing its transport to the nucleus and protecting it to further NFKBIA-dependent inactivation. Association with inhibitor kappa B-interacting NKIRAS1 and NKIRAS2 prevent its phosphorylation rendering it more resistant to degradation, explaining its slower degradation.

Cellular Location

Cytoplasm. Nucleus.

Tissue Location

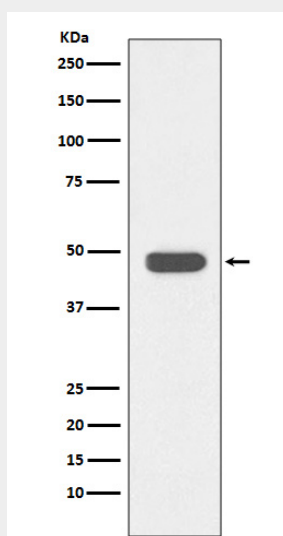
Expressed in all tissues examined.

Anti-IKB beta Rabbit Monoclonal Antibody - Protocols

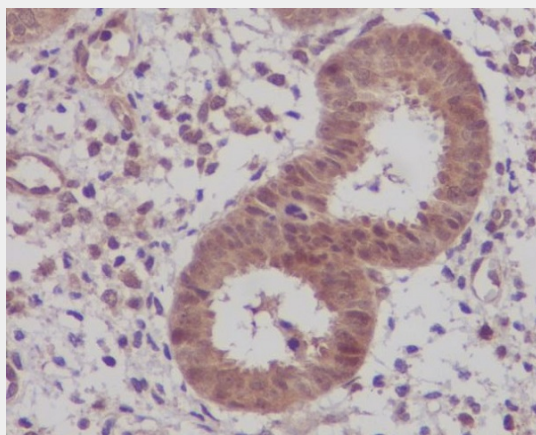
Provided below are standard protocols that you may find useful for product applications.

- [Western Blot](#)
- [Blocking Peptides](#)
- [Dot Blot](#)
- [Immunohistochemistry](#)
- [Immunofluorescence](#)
- [Immunoprecipitation](#)
- [Flow Cytometry](#)
- [Cell Culture](#)

Anti-IKB beta Rabbit Monoclonal Antibody - Images



Western blot analysis of IKB beta expression in Jurkat cell lysate.



Immunohistochemical analysis of paraffin-embedded human uterus, using IKB beta Antibody.