

Anti-MAD2L1BP/Mad2L1 Binding Protein Rabbit Monoclonal Antibody
Catalog # ABO13930**Specification**

Anti-MAD2L1BP/Mad2L1 Binding Protein Rabbit Monoclonal Antibody - Product Information

Application	WB, IHC, IF, ICC
Primary Accession	Q15013
Host	Rabbit
Isotype	Rabbit IgG
Reactivity	Rat, Human, Mouse
Clonality	Monoclonal
Format	Liquid

Description

Anti-MAD2L1BP/Mad2L1 Binding Protein Rabbit Monoclonal Antibody . Tested in WB, IHC, ICC/IF applications. This antibody reacts with Human, Mouse, Rat.

Anti-MAD2L1BP/Mad2L1 Binding Protein Rabbit Monoclonal Antibody - Additional Information

Gene ID 9587

Other Names

MAD2L1-binding protein, Caught by MAD2 protein, p31(comet), MAD2L1BP, CMT2, KIAA0110

Calculated MW

31052 MW KDa

Application Details

WB 1:500-1:2000
IHC 1:50-1:200
ICC/IF 1:50-1:200

Subcellular Localization

Nucleus. Cytoplasm, cytoskeleton, spindle. During early mitosis, unevenly distributed throughout the nucleoplasm. From metaphase to anaphase, concentrated on the spindle.

Contents

Rabbit IgG in phosphate buffered saline, pH 7.4, 150mM NaCl, 0.02% sodium azide and 50% glycerol, 0.4-0.5mg/ml BSA.

Immunogen

A synthesized peptide derived from human MAD2L1BP

Purification

Affinity-chromatography

Storage

Store at -20°C for one year. For short term storage and frequent use, store at 4°C for up to one month. Avoid repeated freeze-thaw cycles.

Anti-MAD2L1BP/Mad2L1 Binding Protein Rabbit Monoclonal Antibody - Protein Information

Name MAD2L1BP

Synonyms CMT2, KIAA0110

Function

May function to silence the spindle checkpoint and allow mitosis to proceed through anaphase by binding MAD2L1 after it has become dissociated from the MAD2L1-CDC20 complex.

Cellular Location

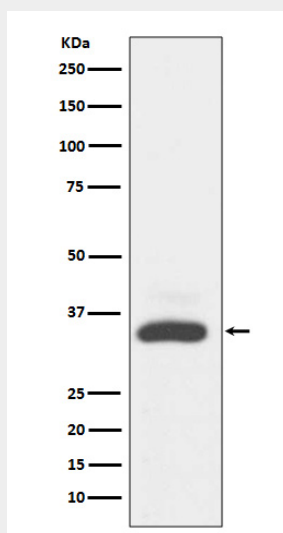
Nucleus. Cytoplasm, cytoskeleton, spindle. Note=During early mitosis, unevenly distributed throughout the nucleoplasm. From metaphase to anaphase, concentrated on the spindle

Anti-MAD2L1BP/Mad2L1 Binding Protein Rabbit Monoclonal Antibody - Protocols

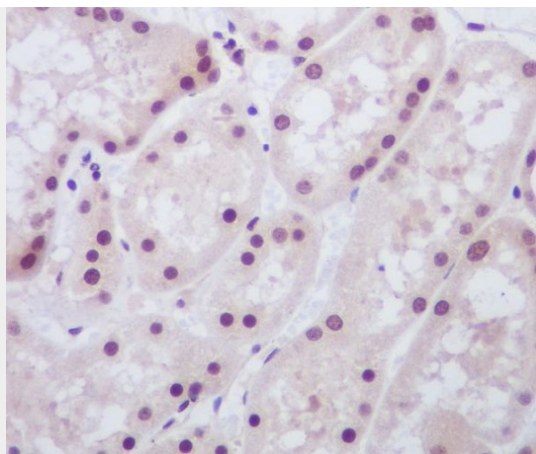
Provided below are standard protocols that you may find useful for product applications.

- [Western Blot](#)
- [Blocking Peptides](#)
- [Dot Blot](#)
- [Immunohistochemistry](#)
- [Immunofluorescence](#)
- [Immunoprecipitation](#)
- [Flow Cytometry](#)
- [Cell Culture](#)

Anti-MAD2L1BP/Mad2L1 Binding Protein Rabbit Monoclonal Antibody - Images



Western blot analysis of MAD2L1BP expression in A431 cell lysate.



Immunohistochemical analysis of paraffin-embedded human kidney, using MAD2L1BP Antibody.